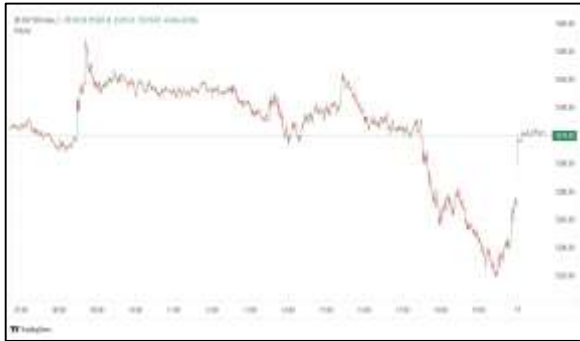


Commodities and Indices Market View

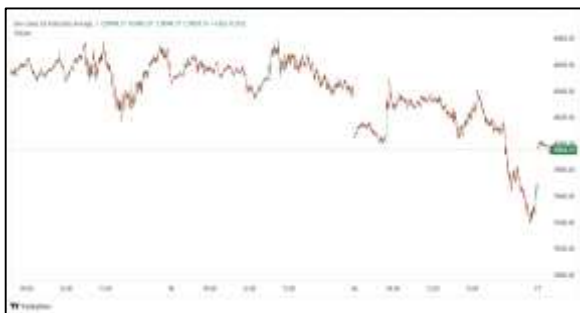
Friday, April 3, 2026



Technicals



S&P 500	RSI (20:80)	Sto Fast
	46.18	37.51% 56.08%



Dow Jones	RSI (20:80)	Sto Fast
	45.49	40.76% 59.74%

US Stock Market

DJIA	S&P 500	NASDAQ
46,504.67	6,582.69	21,879.18
-0.13%	+0.11%	+0.18%

U.S. stocks ended slightly mixed on Thursday after paring deeper losses, as diplomatic signals from the Middle East helped calm markets rattled earlier by U.S. President Donald Trump's threats of tougher action against Iran ahead of a long holiday weekend.

Stocks had opened lower amid rising oil prices after U.S. President Donald Trump signaled more aggressive attacks, ahead of the Good Friday holiday, when markets will be closed.

The three indexes had their biggest weekly rise in four months and the first week of gains in six.

the Dow Jones Industrial Average (.DJI), fell 0.13%, to 46,504.67 points, the S&P 500 (.SPX), gained 0.11% to 6,582.69 points and the Nasdaq Composite (.IXIC), gained 0.18%, to 21,879.18.

For the week, the S&P 500 gained 3.36%, the Nasdaq rose 4.44%, and the Dow climbed 2.96%. The Russell 2000 small-cap index rose 3.19%.

Volume on U.S. exchanges was 16.75 billion shares, compared with the 17.82 billion average for the full session over the last 20 trading days.

Major Economic Releases for Today

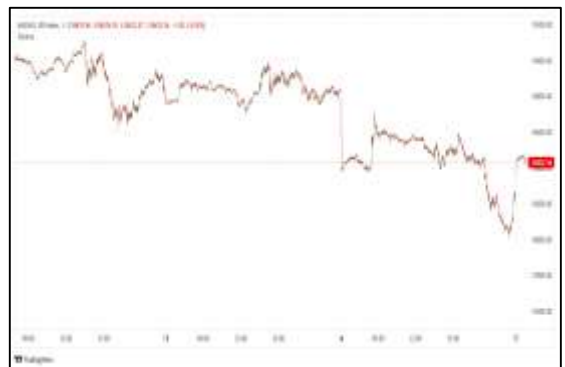
Period	Event	GMT	Forecast	Previous
APR	Average Hourly Earnings (MoM)	5:30	0.30%	0.40%
APR	Average Hourly Earnings (YoY)	5:30	3.70%	3.80%
APR	U6 Underemployment Rate	5:30	--	7.90%
APR	Unemployment Rate	5:30	4.40%	4.40%
APR	Labor Force Participation Rate	5:30	--	62.00%

Dow Jones Industrial Average

At the close in NYSE, the Dow Jones Industrial Average lost 0.13%. The best performers of the session on the Dow Jones Industrial Average were International Business Machines (NYSE:IBM), which rose 2.06% or 5.02 points to trade at 248.16 at the close. Meanwhile, Cisco Systems Inc (NASDAQ:CSCO) added 1.94% or 1.51 points to end at 79.02 and Travelers Companies (NYSE:TRV) was up 1.23% or 3.57 points to 294.10 in late trade.



The worst performers of the session were Home Depot Inc (NYSE:HD), which fell 2.41% or 7.93 points to trade at 321.63 at the close. Sherwin-Williams Co (NYSE:SHW) declined 2.36% or 7.70 points to end at 318.00 and Caterpillar Inc (NYSE:CAT) was down 1.75% or 12.80 points to 717.52.



NASDAQ 100

At the close in NYSE, the NASDAQ Composite index added 0.18%. The top performers on the NASDAQ Composite were Visionary Education Technology Holdings Group Inc (NASDAQ:GV) which rose 116.78% to 0.44, Sky Quarry Inc (NASDAQ:SKYQ) which was up 101.58% to settle at 5.10 and Cocrysal Pharma Inc (NASDAQ:COCP) which gained 48.36% to close at 1.51.



The worst performers were Lipocine Inc (NASDAQ:LPCN) which was down 77.84% to 2.05 in late trade, PMGC Holdings Inc (NASDAQ:ELAB) which lost 59.14% to settle at 5.72 and Maxeon Solar Technologies Ltd (NASDAQ:MAXN) which was down 38.94% to 0.68 at the close.

OIL

U.S. crude oil futures for immediate delivery next month hit their largest-ever premium over the second-month contract on Thursday, as traders scrambled to secure barrels after U.S. President Donald Trump vowed to continue attacking Iran.

WTI crude futures for May delivery traded as much as \$16.70 per barrel higher than the June contract during the session.



Precious and Base Metals

Gold prices edged higher on Wednesday to their highest in nearly two weeks, supported by a weaker dollar as U.S. President Donald Trump said the war with Iran could wind down within two to three weeks.

Spot gold rose 0.4% to \$4,685.79 per ounce by 0228 GMT, having hit its highest level since March 20 at \$4,723.21 earlier in the day. U.S. gold futures for April delivery gained 0.8% to \$4,713.40.

The U.S. dollar fell 0.2%, making greenback-denominated commodities more affordable for holders of other currencies.

Spot silver fell 0.8% to \$74.53 per ounce, platinum gained 0.7% to \$1,963.22 and palladium was up 0.6% at \$1,484.84.



Traditional Agricultures

Soybeans saw losses of 1 to 5 ¼ cents in most contracts on Thursday, as May saw a 4 ¼ cent gain this week. The cmdtyView national average Cash Bean price was down 5 1/2 cents at \$10.94.

Corn futures headed into the long weekend, with some front month weakness as money was being taken off the table. Old crop contracts were fractionally to 2 cents lower, as new crop was steady to fractionally higher.

The wheat complex held on for marginal gains to head into the long weekend. Chicago SRW futures saw fractional to 2 cent gains on the day, with May down 6 ¾ cents on the week. KC HRW futures were 2 to 3 1/2 cents higher on Thursday, as May fell 17 cents this week. MPLS spring wheat was 3 to 4 ¾ cents in the green, with May up 1 ½ cents this week.



Future Settlement Price Friday, April 03rd , 2 0 2 6

Instrument	Last	Net Change	High	Low	Volume
S & P 500	6,609.75	-12.50	6,632.25	6,608.75	24,084.00
NASDAQ 100	24,159.00	-59.00	24,255.00	24,150.50	21,721.00
Dow Jones	46,659.00	-73.00	46,781.00	46,650.00	2,573.00
Gold	4,679.75	-133.40	4,825.90	4,580.40	186,430.00
Silver	72.9245	-3.15	75.99	69.61	51,377.00
Copper	5.5835	-0.06	5.73	5.51	44,937.00
Crude Oil	111.54	11.42	113.97	97.50	514,620.00
Platinum	1,983.20	-6.50	2,008.20	1,875.00	17,275.00
Palladium	1,507.40	13.20	1,519.00	1,426.50	4,988.00
Natural Gas	2.8005	-0.02	2.89	2.78	143,105.00
Wheat	598-25	-6.00	609-2	594-0	68,863.00
Soy Beans	1163-45	-5.00	1174-2	1162-0	79,795.00
Corn	452-25	-2.00	460-4	451-2	148,345.00

Daily Swings (The Pivot Levels)

Instrument	Trading Range						
	S3	S2	S1	Pivot	R1	R2	R3
Dow Jones	45,966.22	46,181.17	46,373.46	46588.41	46,780.70	46,995.65	47,187.94
S & P 500	6,494.47	6,524.38	6,549.85	6579.76	6,605.23	6,635.14	6,660.61
NASDAQ 100	23,582.43	23,727.02	23,873.50	24018.09	24,164.57	24,309.16	24,455.64
Gold	4,597.40	4,643.70	4,728.40	4774.70	4,859.40	4,905.70	4,990.40
Silver	72.37	73.18	74.63	75.45	76.90	77.71	79.16
Copper	5.52	5.55	5.60	5.63	5.68	5.71	5.76
Crude Oil	89.84	93.17	96.65	99.98	103.46	106.79	110.27
Platinum	1,914.94	1,931.57	1,960.64	1977.2	2,006.34	2,022.97	2,052.04
Palladium	1,409.96	1,436.73	1,465.46	1492.2	1,520.96	1,547.73	1,576.46
Natural Gas	2.66	2.72	2.77	2.83	2.88	2.95	3.00
Wheat	556.75	575.00	586.25	604.50	615.75	634.00	645.25
Cotton	67.00	67.80	69.28	70.08	71.56	72.36	73.84
Corn	437.00	442.75	448.50	454.25	460.00	465.75	471.50

Source: - News & Quotes (Reuters, Investing, Bloomberg, FXStreet, Barchart)

Disclaimer: This document has been prepared by IGI Finex Securities Limited and is for information purposes only. Whilst every effort has been made to ensure that all the information (including any recommendations or opinions expressed) contained in this document (the information) is not misleading or unreliable, IGI Finex Securities Limited makes no representation as to the accuracy or completeness of the information. Neither IGI Finex Securities Limited nor any director, officer or employee of IGI Finex Securities Limited shall in any manner be liable or responsible for any loss that may be occasioned as consequence of a party relying on the information. This document takes no account of the investment objectives, financial situation and particular needs of investors, who shall seek further professional advice before making any investment decision. This document and the information may not be reproduced, distributed or published by any recipient for any purpose.

Contact Details

Commodity Team

Zaeem Haider Khan	Head of Commodities	Tel: (+92-21) 35301405	zaeem.haider@igi.com.pk
Shakeel Ahmad	Branch Manager – Faisalabad	Tel: (+92-41) 2540843-45	shakeel.ahmad1@igi.com.pk
Ehsan Ul Haq	Trader – Lahore	Tel: (+92-42) 3830559-68	ehsan.haq@igi.com.pk
Dil Muhammad	Trader – Lahore	Tel: (+92-41) 2540843-45	dil.muhammad@igi.com.pk
Inamullah Shakir	Trader – Islamabad	Tel: (+92-21) 32429613-14	inam.ullah@igi.com.pk
Sheikh Muhammad Imran	Trader – Karachi	Tel: (+92-21) 35301684	imran.ahmed@igi.com.pk
Asif Saleem	Branch Manager – Rahim Yar Khan	Tel: (+92-68) 5871652-6	asif.saleem@igi.com.pk
Mahtab Ali	Branch Manager – Multan	Tel: (+92-61) 4512003	mahtab.ali@igi.com.pk

Research Team

Abdullah Farhan	Head of Research	Tel: (+92-21) 111-234-234 Ext: 912	abdullah.farhan@igi.com.pk
Sakina Makati	Research Analyst	Tel: (+92-21) 111-234-234 Ext: 810	sakina.makati@igi.com.pk
Syed Muzammil Hassan Rizvi	Research Analyst	Tel: (+92-21) 111-234-234 Ext: 569	muzammil.rizvi@igi.com.pk
Sufyan Siddiqui	Database Officer	Tel: (+92-21) 111-234-234 Ext: 888	sufyan.siddiqui@igi.com.pk

IGI Finex Securities Limited

Trading Rights Entitlement Certificate (TREC) Holder of Pakistan Stock Exchange Limited |
Corporate member of Pakistan Mercantile Exchange Limited
Website: www.igisecurities.com.pk

Head Office

Suite No 701-713, 7th Floor, The Forum, G-20,
Khayaban-e-Jami Block-09, Clifton, Karachi-75600
UAN: (+92-21) 111-444-001 | (+92-21) 111-234-234
Fax: (+92-21) 35309169, 35301780

Lahore Office

Shop # G-009, Ground Floor,
Packages Mall
Tel: (+92-42) 38303560-69
Fax: (+92-42) 38303559

Islamabad Office

3rd Floor, Kamran Centre,
Block- B, Jinnah Avenue, Blue Area
Tel: (+92-51) 2604861-2, 2604864,
2273439
Fax: (+92-51) 2273861

Faisalabad Office

Office No. 2, 5 & 8, Ground Floor, The
Regency International 949, The Mall
Faisalabad
Tel: (+92-41) 2540843-45

Rahim Yar Khan Office

Plot # 12, Basement of Khalid Market,
Model Town, Town Hall Road
Tel: (+92-68) 5871652-3
Fax: (+92-68) 5871651

Multan Office

Mezzanine Floor, Abdali Tower,
Abdali Road
Tel: (92-61) 4512003, 4571183