

Commodities and Indices Market View

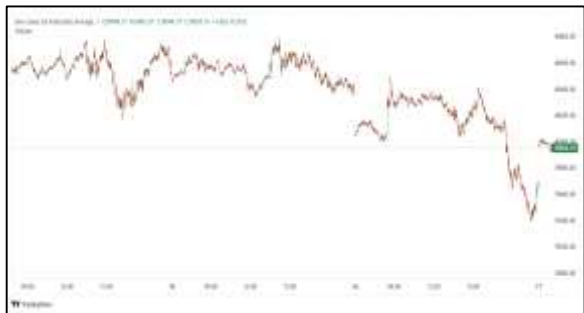
Tuesday, February 3, 2026



Technicals



S&P 500	RSI (20:80)	Sto Fast
	57.29	83.78% 80.89%



Dow Jones	RSI (20:80)	Sto Fast
	56.63	51.65% 58.11%

US Stock Market

DJIA	S&P 500	NASDAQ
49,407.66	6,976.44	23,592.11
+1.05%	+0.54%	+0.56%

The S&P 500 (.SPX), closed higher on Monday, lifted by gains in chipmakers and other companies related to artificial intelligence, while smaller companies also rose sharply.

The S&P 500 climbed 0.54% to end the session at 6,976.44 points, just short of its record high close of 6,978.60 last Tuesday.

The Nasdaq gained 0.56% to 23,592.11 points, while the Dow Jones Industrial Average rose 1.05% to 49,407.66 points.

The S&P 500 is up about 2% in 2026, lagging the Russell 2000's more than 6% rally.

Advancing issues outnumbered falling ones within the S&P 500 (.AD.SPX), by a 1.4-to-one ratio.

The S&P 500 posted 30 new highs and 9 new lows; the Nasdaq recorded 160 new highs and 217 new lows.

Volume on U.S. exchanges was heavy, with 20.1 billion shares traded, compared to an average of 19.4 billion shares over the previous 20 sessions.

Major Economic Releases for Today

Period	Event	GMT	Forecast	Previous
FEB	Unemployment Rate (Q4)	2:45	5.30%	5.30%
FEB	Participation Rate (Q4)	2:45	--	70.30%
FEB	Employment Change (Q4)	2:45	0.30%	0.00%
FEB	Labour Cost Index (QoQ) (Q4)	2:45	0.50%	0.50%
FEB	Retail Sales (YoY) (Dec)	12:00	--	1.10%

Dow Jones Industrial Average

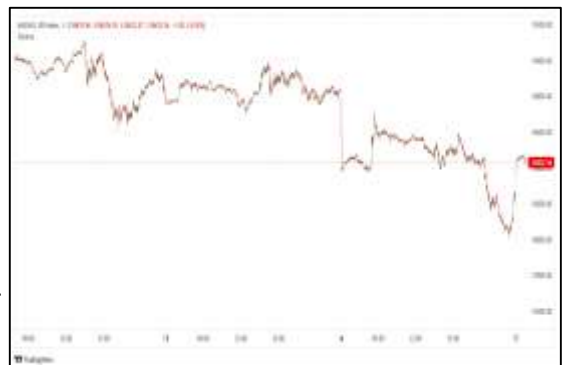
At the close in NYSE, the Dow Jones Industrial Average rose 1.05%. The best performers of the session on the Dow Jones Industrial Average were Caterpillar Inc (NYSE:CAT), which rose 5.10% or 33.55 points to trade at 690.91 at the close. Meanwhile, Walmart Inc (NASDAQ:WMT) added 4.14% or 4.93 points to end at 124.07 and Apple Inc (NASDAQ:AAPL) was up 4.04% or 10.48 points to 270.01 in late trade.



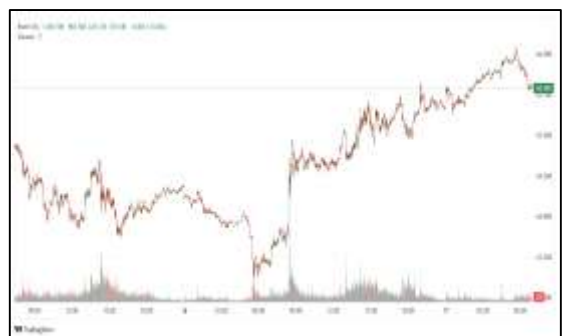
The worst performers of the session were Walt Disney Company (NYSE:DIS), which fell 7.40% or 8.35 points to trade at 104.45 at the close. NVIDIA Corporation (NASDAQ:NVDA) declined 2.89% or 5.52 points to end at 185.61 and Chevron Corp (NYSE:CVX) was down 1.61% or 2.84 points to 174.06.

NASDAQ 100

At the close in NYSE, the NASDAQ Composite index gained 0.56%. The top performers on the NASDAQ Composite were American Rebel Holdings Inc (NASDAQ:AREB) which rose 606.78% to 1.96, DarkIris Inc (NASDAQ:DKI) which was up 192.49% to settle at 0.95 and Fusemachines Inc (NASDAQ:FUSE) which gained 70.89% to close at 2.70.



The worst performers were eLong Power Holding Ltd (NASDAQ:ELPW) which was down 90.39% to 1.34 in late trade, Phoenix Asia Holdings Ltd (NASDAQ:PHOE) which lost 86.78% to settle at 17.60 and INLIF Ltd (NASDAQ:INLF) which was down 70.06% to 0.43 at the close.



OIL

Oil prices fell more than \$3 per barrel on Monday after U.S. President Donald Trump said Iran was "seriously talking" with Washington, signaling a de-escalation of tensions with the OPEC member, while a stronger dollar and milder weather forecasts also pressured prices.



Brent crude futures fell \$3.02, or 4.4%, to settle at \$66.30 per barrel, while U.S.

West Texas Intermediate crude futures fell \$3.07, or 4.7%, to \$62.14 per barrel.

Precious and Base Metals

Gold and silver rebounded more than 2% on Tuesday after a sharp selloff that was triggered by the nomination of Kevin Warsh as the next Fed chair and higher margin requirements at CME Group.

Spot gold climbed 2.2% to \$4,767.33 per ounce by 0318 GMT, after touching a near one-month low on Monday. Bullion scaled a record high of \$5,594.82 on Thursday. U.S. gold futures for April delivery were up 3% at \$4,791.10 per ounce.

Non-yielding bullion tends to perform better in low-interest-rate environments.

Spot silver rose 2.8% to \$81.61 an ounce. It had hit a record high of \$121.64 on Thursday.

Spot platinum climbed 0.6% to \$2,134.10 per ounce after hitting a record high of \$2,918.80 on January 26, while palladium lost 0.5% to \$1,711.0.



Traditional Agricultures

Soybeans are showing 5 to 6 cent losses at Monday's midday. The cmdtyView national average Cash Bean price is 4 1/4 cents lower at \$9.93 1/4.



Corn futures are trading with 2 to 3 1/4 cent losses so far at midday. The CmdtyView national average Cash Corn price is down 2 3/4 cents at \$3.91 1/2.



The wheat complex is continuing a weaker trade on Monday, with the US dollar index up \$0.586. Chicago SRW futures are down 10 to 11 1/2 cents. KC HRW futures are trading with 9 to 10 1/4 cents losses. MPLS spring wheat is 9 to 10 cents lower.

Future Settlement Price Tuesday, February 03rd , 2026					
Instrument	Last	Net Change	High	Low	Volume
S & P 500	7,020.50	18.00	7,023.50	7,002.50	45,754.00
NASDAQ 100	25,973.75	123.75	25,990.75	25,866.50	27,897.00
Dow Jones	49,551.00	28.00	49,574.00	49,474.00	4,560.00
Gold	4,835.70	183.10	4,882.00	4,690.20	42,169.00
Silver	83.23	6.22	85.72	79.01	18,984.00
Copper	5.83	-0.10	5.91	5.56	104,933.00
Crude Oil	61.95	-0.19	62.46	61.55	19,913.00
Platinum	2,104.10	-17.50	2,187.00	1,882.00	31,290.00
Palladium	1,705.00	1.90	1,775.00	1,529.00	8,149.00
Natural Gas	3.22	-0.02	3.29	3.20	7,793.00
Wheat	529-4	-5.00	530-0	527-4	1,547.00
Soy Beans	1062-6	-2.00	1066-2	1060-0	7,757.00
Corn	427-2	-3.00	427-4	425-4	8,214.00

Daily Swings (The Pivot Levels)							
			Trading Range				
Instrument	S3	S2	S1	Pivot	R1	R2	R3
Dow Jones	47,964.54	48,212.21	48,552.34	48800.01	49,140.14	49,387.81	49,727.94
S & P 500	6,829.70	6,861.59	6,900.31	6932.20	6,970.92	7,002.81	7,041.53
NASDAQ 100	25,030.83	25,243.50	25,397.95	25610.62	25,765.06	25,977.74	26,132.18
Gold	4,032.33	4,228.51	4,513.35	4709.53	4,994.37	5,190.55	5,475.39
Silver	56.61	63.90	73.38	80.67	90.15	97.44	106.92
Copper	5.34	5.45	5.67	5.78	6.00	6.12	6.34
Crude Oil	58.63	60.03	60.99	62.39	63.35	64.75	65.71
Platinum	1,688.94	1,785.47	1,974.99	2071.5	2,261.04	2,357.57	2,547.09
Palladium	1,358.16	1,443.58	1,604.16	1689.5	1,850.16	1,935.58	2,096.16
Natural Gas	2.43	2.79	3.01	3.37	3.59	3.95	4.17
Wheat	510.95	518.41	523.08	530.54	535.20	542.66	547.33
Cotton	61.16	61.68	62.17	62.69	63.18	63.70	64.19
Corn	420.26	422.18	423.96	425.88	427.66	429.58	431.36

Source: - News & Quotes (Reuters, Investing, Bloomberg, FXStreet, Barchart)

Disclaimer: This document has been prepared by IGI Finex Securities Limited and is for information purposes only. Whilst every effort has been made to ensure that all the information (including any recommendations or opinions expressed) contained in this document (the information) is not misleading or unreliable, IGI Finex Securities Limited makes no representation as to the accuracy or completeness of the information. Neither IGI Finex Securities Limited nor any director, officer or employee of IGI Finex Securities Limited shall in any manner be liable or responsible for any loss that may be occasioned as consequence of a party relying on the information. This document takes no account of the investment objectives, financial situation and particular needs of investors, who shall seek further professional advice before making any investment decision. This document and the information may not be reproduced, distributed or published by any recipient for any purpose.

Contact Details

Commodity Team

Zaeem Haider Khan	Head of Commodities	Tel: (+92-21) 35301405	zaeem.haider@igi.com.pk
Shakeel Ahmad	Branch Manager – Faisalabad	Tel: (+92-41) 2540843-45	shakeel.ahmad1@igi.com.pk
Ehsan Ul Haq	Trader – Lahore	Tel: (+92-42) 3830559-68	ehsan.haq@igi.com.pk
Dil Muhammad	Trader – Lahore	Tel: (+92-41) 2540843-45	dil.muhammad@igi.com.pk
Inamullah Shakir	Trader – Islamabad	Tel: (+92-21) 32429613-14	inam.ullah@igi.com.pk
Sheikh Muhammad Imran	Trader – Karachi	Tel: (+92-21) 35301684	imran.ahmed@igi.com.pk
Asif Saleem	Branch Manager – Rahim Yar Khan	Tel: (+92-68) 5871652-6	asif.saleem@igi.com.pk
Mahtab Ali	Branch Manager – Multan	Tel: (+92-61) 4512003	mahtab.ali@igi.com.pk

Research Team

Abdullah Farhan	Head of Research	Tel: (+92-21) 111-234-234 Ext: 912	abdullah.farhan@igi.com.pk
Sakina Makati	Research Analyst	Tel: (+92-21) 111-234-234 Ext: 810	sakina.makati@igi.com.pk
Syed Muzammil Hassan Rizvi	Research Analyst	Tel: (+92-21) 111-234-234 Ext: 569	muzammil.rizvi@igi.com.pk
Sufyan Siddiqui	Database Officer	Tel: (+92-21) 111-234-234 Ext: 888	sufyan.siddiqui@igi.com.pk

IGI Finex Securities Limited

Trading Rights Entitlement Certificate (TREC) Holder of Pakistan Stock Exchange Limited |
Corporate member of Pakistan Mercantile Exchange Limited
Website: www.igisecurities.com.pk

Head Office

Suite No 701-713, 7th Floor, The Forum, G-20,
Khayaban-e-Jami Block-09, Clifton, Karachi-75600
UAN: (+92-21) 111-444-001 | (+92-21) 111-234-234
Fax: (+92-21) 35309169, 35301780

Lahore Office

Shop # G-009, Ground Floor,
Packages Mall
Tel: (+92-42) 38303560-69
Fax: (+92-42) 38303559

Islamabad Office

3rd Floor, Kamran Centre,
Block- B, Jinnah Avenue, Blue Area
Tel: (+92-51) 2604861-2, 2604864,
2273439
Fax: (+92-51) 2273861

Faisalabad Office

Office No. 2, 5 & 8, Ground Floor, The
Regency International 949, The Mall
Faisalabad
Tel: (+92-41) 2540843-45

Rahim Yar Khan Office

Plot # 12, Basement of Khalid Market,
Model Town, Town Hall Road
Tel: (+92-68) 5871652-3
Fax: (+92-68) 5871651

Multan Office

Mezzanine Floor, Abdali Tower,
Abdali Road
Tel: (92-61) 4512003, 4571183