

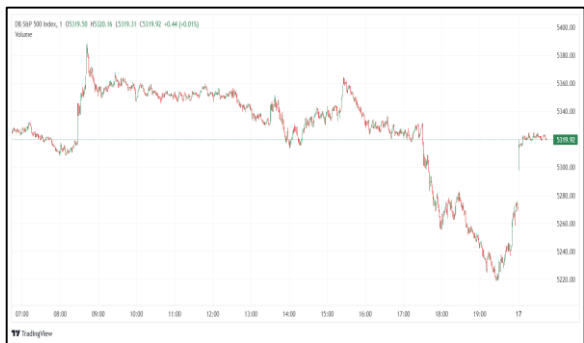
# Commodities and Indices Market View

Thursday, June 5, 2025



SERVING YOU SINCE 1994

## Technicals



S&P 500	RSI (20:80)	Sto Fast
	64.70%	D 84.15% K 89.87%



Dow Jones	RSI (20:80)	Sto Fast
	57.78%	D 67.22% K 71.29%

## US Stock Market

DJIA	S&P 500	NASDAQ
42,427.74	5,970.81	19,460.49
-0.22%	+0.01%	+0.32%

U.S. stocks ended mixed on Wednesday, with the benchmark S&P 500 flat, the technology-heavy Nasdaq Composite slightly up and the Dow Jones Industrial Average down as weak data revealed the economic toll taken by President Donald Trump's trade policies.

The services sector contracted in May for the first time in nearly a year, while businesses paid higher input prices, a reminder that the economy was still at risk of slowing growth and rising inflation. Early gains in the S&P 500 evaporated toward the close and trading volume was relatively light. Investors focused on tariff negotiations between Washington and trading partners, with Trump and Chinese leader Xi Jinping expected to speak sometime this week as tensions simmer between the world's two biggest economies. May saw the biggest monthly increases for the S&P 500 index (.SPX), and the tech-heavy Nasdaq (.IXIC), since November 2023, thanks to a softening of Trump's harsh trade stance and upbeat earnings reports. The S&P 500 remains more than 2% below record highs touched in February. The Dow Jones Industrial Average (.DJI), fell 91.90 points, or 0.22%, to 42,427.74, the S&P 500 (.SPX), gained 0.44 points, or 0.01%, to 5,970.81 and the Nasdaq Composite (.IXIC), gained 61.53 points, or 0.32%, to 19,460.49.

## Major Economic Releases for Today

Period	Event	GMT	Forecast	Previous
MAY	EUR ECB Main Refinancing Operations Rate	12:15	21.50%	2.40%
MAY	EUR ECB Monetary Policy Statement	12:15	-	-
MAY	EUR ECB Rate On Deposit Facility	12:15	2.00%	2.25%
MAY	EUR ECB Press Conference	12:45	-	-

## Dow Jones Industrial Average

At the close in NYSE, the Dow Jones Industrial Average lost 0.22%. The best performers of the session on the Dow Jones Industrial Average were Merck & Company Inc (NYSE:MRK), which rose 1.46% or 1.13 points to trade at 78.27 at the close. Meanwhile, Sherwin-Williams Co (NYSE:SHW) added 1.25% or 4.46 points to end at 362.22 and Amazon.com Inc (NASDAQ:AMZN) was up 0.74% or 1.52 points to 207.23 in late trade.

The worst performers of the session were Chevron Corp (NYSE:CVX), which fell 1.54% or 2.15 points to trade at 137.40 at the close. Travelers Companies (NYSE:TRV) declined 1.52% or 4.21 points to end at 271.86 and Verizon Communications Inc (NYSE:VZ) was down 1.35% or 0.59 points to 43.24.

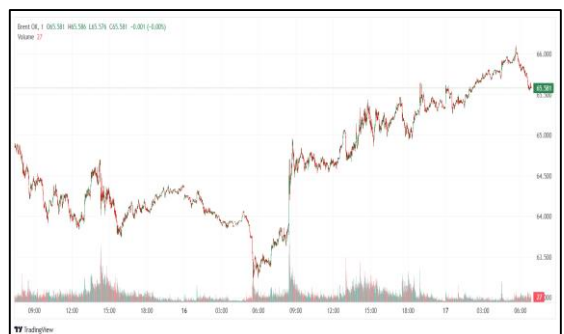


## NASDAQ 100

At the close in NYSE, the NASDAQ Composite index gained 0.32%. The top performers on the NASDAQ Composite were Mullen Automotive Inc (NASDAQ:MULN) which rose 198.70% to 16.10, K Wave Media Ltd (NASDAQ:KWM) which was up 133.33% to settle at 4.48 and Liminatus Pharma Inc (NASDAQ:LIMN) which gained 123.77% to close at 12.71.



The worst performers were CTRL Group Ltd (NASDAQ:MCTR) which was down 53.19% to 15.40 in late trade, Ptl Inc (NASDAQ:PTLE) which lost 43.63% to settle at 0.41 and ReShape Lifesciences Inc (NASDAQ:RSLI) which was down 28.44% to 4.83 at the close.



## OIL

Oil prices slipped on Thursday after a build in U.S. gasoline and diesel inventories and cuts to Saudi Arabia's July prices for Asian crude buyers, with global economic uncertainty also weighing on prices. Brent crude futures fell 14 cents, or 0.2%, to \$64.72 a barrel at 0500 GMT. U.S. West Texas Intermediate crude lost 24 cents, or 0.4%, dropping to \$62.61 a barrel. Oil prices closed around 1% lower on Wednesday after official data showed that U.S. gasoline and distillate stockpiles grew more than expected, reflecting weaker demand in the world's top economy.



## Precious and Base Metals

Gold prices were stable on Thursday as investors assessed weaker-than-expected U.S. data and ongoing global economic and political uncertainties, while looking ahead to U.S. payroll data for further economic cues. Spot gold held its ground at \$3,372.91 an ounce, as of 0354 GMT. U.S. gold futures edged down 0.1% to \$3,396.60. The U.S. services sector contracted in May for the first time in nearly a year, as businesses faced higher input costs amid growing fears of stagflation. Gold gained support after the Federal Reserve reported a slowdown in U.S. economic activity, citing rising costs and prices driven by increased tariff rates since the last policy meeting. Bullion gained additional momentum after U.S. President Donald Trump reiterated his call to Fed Chair Jerome Powell on Wednesday to cut interest rates. Gold, a safe-haven asset during times of political and economic uncertainty, tends to thrive in a low-interest-rate environment. Elsewhere, spot silver fell 1.3% to \$34.51 an ounce, platinum rose 1.1% to \$1,097.13 and palladium was down 0.2% at \$998.71.

## Traditional Agricultures

The soybean market saw Wednesday gains of 3 to 5 cents at the close, pulling back off some intraday highs. The cmdtyView Cash Bean price was up 4 3/4 cents to \$10.00. Soymeal futures were \$1.90 to \$2.60/ton higher, as Soy Oil were mixed, with 6 point losses to 2 point gains. The wheat complex started off the Wednesday session slow, but closed with gains across the three markets. Chicago SRW futures saw 6 to 8 cent gains that the Wednesday close. Kansas City HRW contracts posted 3 to 4 cent gains at the final bell. Corn futures posted Wednesday gains of fractionally to 5 1/4 cents, as July continues to be on the selling side of the bear spreading. The front month CmdtyView national average Cash Corn price was up 1/4 cent at \$4.14 1/4.



### Future Settlement Price Thursday, Jun 05th, 2025

Instrument	Last	Net Change	High	Low	Volume
S & P 500	5,975.25	-5.75	5,981.00	5,972.25	29,100.00
NASDAQ 100	21,734.25	-32.25	21,772.50	21,725.25	22,632.00
Dow Jones	42,491.00	-9.00	42,506.00	42,454.00	2,265.00
Gold	3,392.00	-7.20	3,407.70	3,386.90	29,218.00
Silver	34.64	-0.01	34.77	34.60	4,304.00
Copper	4.89	0.05	4.92	4.84	32,770.00
Crude Oil	62.59	-0.26	62.81	62.50	7,723.00
Platinum	1,090.00	19.10	1,092.40	1,072.20	30,113.00
Palladium	1,007.80	-17.00	1,027.00	1,001.50	3,623.00
Natural Gas	3.68	-0.04	3.71	3.67	2,906.00
Wheat	546-0	-4.00	547-4	543-4	2,504.00
Soy Beans	1043-2	-7.00	1046-0	1042-6	4,798.00
Corn	440-0	-1.00	440-4	438-2	6,482.00

### Daily Swings (The Pivot Levels)

Instrument	Trading Range						
	S3	S2	S1	Pivot	R1	R2	R3
Dow Jones	41,899.32	42,042.88	42,281.26	42,424.82	42,663.20	42,806.76	43,045.14
S & P 500	5,886.78	5,907.89	5,939.13	5,960.24	5,991.48	6,012.59	6,043.83
NASDAQ 100	21,277.95	21,376.23	21,519.40	21,617.68	21,760.85	21,859.13	22,002.31
Gold	3,333.02	3,349.96	3,375.82	3,392.76	3,418.62	3,435.56	3,461.42
Silver	34.05	34.29	34.47	34.72	34.90	35.14	35.32
Copper	4.77	4.81	4.85	4.88	4.93	4.96	5.00
Crude Oil	60.09	61.13	61.88	62.92	63.67	64.71	65.46
Platinum	1,056.64	1,064.42	1,076.84	1,084.6	1,097.04	1,104.82	1,117.24
Palladium	970.34	985.92	995.84	1,011.4	1,021.34	1,036.92	1,046.84
Natural Gas	3.59	3.62	3.66	3.70	3.74	3.78	3.82
Wheat	521.50	527.50	535.50	541.50	549.50	555.50	563.50
Cotton	63.37	64.15	64.57	65.35	65.77	66.55	66.97
Corn	426.66	432.08	435.16	440.58	443.66	449.08	452.16

**Source:** - News & Quotes (Reuters, Investing, Bloomberg, FXStreet, Barchart)

**Disclaimer:** This document has been prepared by IGI Finex Securities Limited and is for information purposes only. Whilst every effort has been made to ensure that all the information (including any recommendations or opinions expressed) contained in this document (the information) is not misleading or unreliable, IGI Finex Securities Limited makes no representation as to the accuracy or completeness of the information. Neither IGI Finex Securities Limited nor any director, officer or employee of IGI Finex Securities Limited shall in any manner be liable or responsible for any loss that may be occasioned as consequence of a party relying on the information. This document takes no account of the investment objectives, financial situation and particular needs of investors, who shall seek further professional advice before making any investment decision. This document and the information may not be reproduced, distributed or published by any recipient for any purpose.

## Contact Details

### Commodity Team

Zaeem Haider Khan	Head of Commodities	Tel: (+92-21) 35301405	zaeem.haider@igi.com.pk
Shakeel Ahmad	Branch Manager – Faisalabad	Tel: (+92-41) 2540843-45	shakeel.ahmad1@igi.com.pk
Ehsan Ul Haq	Trader – Lahore	Tel: (+92-42) 3830559-68	ehsan.haq@igi.com.pk
Dil Muhammad	Trader – Lahore	Tel: (+92-41) 2540843-45	dil.muhammad@igi.com.pk
Inamullah Shakir	Trader – Islamabad	Tel: (+92-21) 32429613-14	inam.ullah@igi.com.pk
Sheikh Muhammad Imran	Trader – Karachi	Tel: (+92-21) 35301684	imran.ahmed@igi.com.pk
Asif Saleem	Branch Manager – Rahim Yar Khan	Tel: (+92-68) 5871652-6	asif.saleem@igi.com.pk
Mahtab Ali	Branch Manager – Multan	Tel: (+92-61) 4512003	mahtab.ali@igi.com.pk

### Research Team

Abdullah Farhan	Head of Research	Tel: (+92-21) 111-234-234 Ext: 912	abdullah.farhan@igi.com.pk
Sakina Makati	Research Analyst	Tel: (+92-21) 111-234-234 Ext: 810	sakina.makati@igi.com.pk
Laraib Nisar	Research Analyst	Tel: (+92-21) 111-234-234 Ext: 974	laraib.nisar@igi.com.pk

### IGI Finex Securities Limited

Trading Rights Entitlement Certificate (TREC) Holder of Pakistan Stock Exchange Limited |

Corporate member of Pakistan Mercantile Exchange Limited

Website: [www.igisecurities.com.pk](http://www.igisecurities.com.pk)

#### Head Office

Suite No 701-713, 7th Floor, The Forum, G-20,  
Khayaban-e-Jami Block-09, Clifton, Karachi-75600

UAN: (+92-21) 111-444-001 | (+92-21) 111-234-234

Fax: (+92-21) 35309169, 35301780

#### Lahore Office

Shop # G-009, Ground Floor,  
Packages Mall

Tel: (+92-42) 38303560-69

Fax: (+92-42) 38303559

#### Islamabad Office

3<sup>rd</sup> Floor, Kamran Centre,  
Block- B, Jinnah Avenue, Blue Area  
Tel: (+92-51) 2604861-2, 2604864,  
2273439

Fax: (+92-51) 2273861

#### Faisalabad Office

Office No. 2, 5 & 8, Ground Floor, The  
Regency International 949, The Mall  
Faisalabad

Tel: (+92-41) 2540843-45

#### Rahim Yar Khan Office

Plot # 12, Basement of Khalid Market,  
Model Town, Town Hall Road

Tel: (+92-68) 5871652-3

Fax: (+92-68) 5871651

#### Multan Office

Mezzanine Floor, Abdali Tower,  
Abdali Road

Tel: (92-61) 4512003, 4571183

IGI Finex Securities Limited

© Copyright 2024 IGI Finex Securities Limited