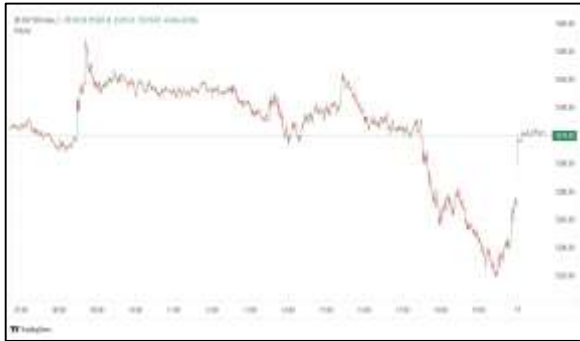


# Commodities and Indices Market View

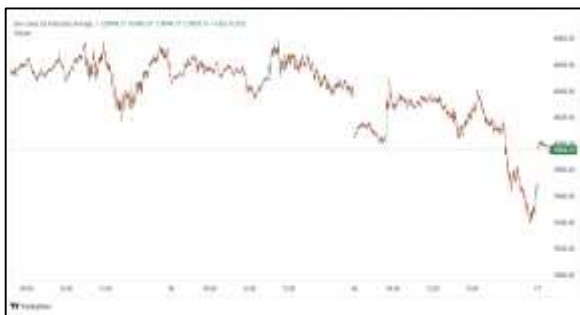
Tuesday, April 7, 2026



## Technicals



S&P 500	RSI (20:80)	Sto Fast
	48.30	60.70% 65.83%



Dow Jones	RSI (20:80)	Sto Fast
	47.28	61.76% 63.50%

## US Stock Market

DJIA	S&P 500	NASDAQ
46,669.88	6,611.83	21,996.34
+0.36%	+0.44%	+0.54%

U.S. stocks advanced on Monday as investors looked for signs of progress toward a U.S.-Iran ceasefire deal.

All three major U.S. indexes advanced slightly, with the S&P 500 and the Nasdaq on track for the fourth consecutive day of gains, their longest winning streaks since January.

The Dow Jones Industrial Average (.DJI), rose 165.21 points, or 0.36%, to 46,669.88, the S&P 500 (.SPX), gained 29.33 points, or 0.45%, to 6,612.02 and the Nasdaq Composite (.IXIC), gained 117.16 points, or 0.54%, to 21,996.34.

Advancing issues outnumbered decliners by a 1.93-to-1 ratio on the NYSE. There were 88 new highs and 54 new lows on the NYSE. On the Nasdaq, 2,918 stocks rose and 1,788 fell as advancing issues outnumbered decliners by a 1.63-to-1 ratio.

The S&P 500 posted seven new 52-week highs and two new lows while the Nasdaq Composite recorded 61 new highs and 70 new lows.

Volume on U.S. exchanges was 14.78 billion shares, compared with the 19.51 billion average for the full session over the last 20 trading days.

## Major Economic Releases for Today

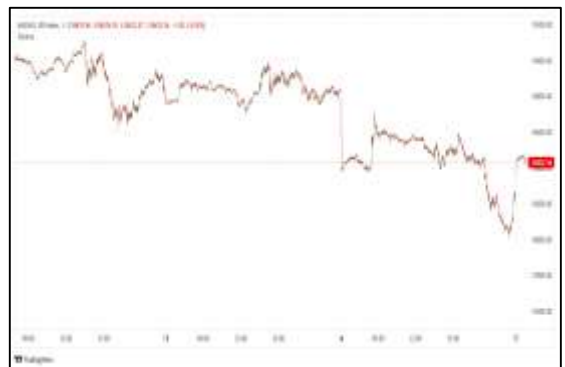
Period	Event	GMT	Forecast	Previous
APR	Producer Price Index (MoM)	2:00	-0.70%	0.70%
APR	Producer Price Index (YoY)	2:00	-3.00%	-2.10%
APR	Retail Sales (MoM)	2:00	-0.20%	-0.10%
APR	Retail Sales (YoY)	2:00	1.60%	2.00%
APR	Labor Force Participation Rate	5:30	--	62.00%

## Dow Jones Industrial Average

At the close in NYSE, the Dow Jones Industrial Average rose 0.35%. The best performers of the session on the Dow Jones Industrial Average were Boeing Co (NYSE:BA), which rose 1.96% or 4.08 points to trade at 212.30 at the close. Meanwhile, American Express Company (NYSE:AXP) added 1.85% or 5.55 points to end at 305.73 and Cisco Systems Inc (NASDAQ:CSCO) was up 1.79% or 1.42 points to 80.44 in late trade.



The worst performers of the session were Amgen Inc (NASDAQ:AMGN), which fell 1.54% or 5.37 points to trade at 342.57 at the close. Salesforce Inc (NYSE:CRM) declined 1.15% or 2.15 points to end at 185.03 and Johnson & Johnson (NYSE:JNJ) was down 0.85% or 2.07 points to 240.97.



## NASDAQ 100

At the close in NYSE, the NASDAQ Composite index added 0.54%. The top performers on the NASDAQ Composite were Xiao I Corp ADR (NASDAQ:AIXI) which rose 515.07% to 0.80, Profusa Inc (NASDAQ:PFSA) which was up 144.06% to settle at 1.85 and Focus Universal Inc (NASDAQ:FCUV) which gained 72.37% to close at 5.74.



The worst performers were Inno Holdings Inc (NASDAQ:INHD) which was down 51.54% to 0.50 in late trade, JetAI Inc (NASDAQ:JTAI) which lost 48.71% to settle at 0.04 and Intercont (NASDAQ:NCT) which was down 35.51% to 1.78 at the close.

## OIL

Oil prices extended gains on Tuesday as U.S. President Donald Trump heightened his rhetoric against Iran, threatening stronger action if the country fails to reopen the Strait of Hormuz, a key global oil transit chokepoint.



Brent crude futures rose 57 cents, or 0.5%, to \$110.34 a barrel by 1202 GMT, while U.S. West Texas Intermediate crude futures were up \$1.26, or 1.1%, at \$113.67.

## Precious and Base Metals

Gold prices steadied on Tuesday, as investors remained cautious ahead of a deadline set by U.S. President Donald Trump for reopening the Strait of Hormuz, a key flashpoint in the Iran war.

Spot gold slipped 0.1% to \$4,640.93 per ounce by 0327 GMT, while U.S. gold futures for June delivery fell 0.4% to \$4,666.70.



Investors now await the minutes of the Fed's March policy meeting on Wednesday, as well as U.S. inflation indicators, including Personal Consumption Expenditures (PCE) data and the Consumer Price Index (CPI) later this week.



Spot silver fell 0.9% to \$72.17 per ounce, platinum shed 1.1% to \$1,958.75 and palladium lost 0.5% to \$1,478.49.

## Traditional Agricultures

Soybeans posted gains on Monday, with contracts 3 to 5 1/2 cents higher at the post-Easter close. The cmdtyView national average Cash Bean price was up 3 1/4 cents at \$10.97 1/2.



Corn futures got a pop coming out of the Easter holiday weekend, with contracts closing 1 3/4 to 2 1/2 cents in the green. The CmdtyView national average Cash Corn price was up 1 3/4 cents at \$4.14 1/4.



The wheat complex was mostly lower on Monday across the three markets. Chicago SRW futures were mixed, with front months down 1 to 3 cents and back months higher. KC HRW futures saw nearby losses of 2 3/4 to 7 1/2 cents at the close. MPLS spring wheat was 1 1/4 to 2 1/4 cents in the res on the day.

**Future Settlement Price Tuesday, April 07th , 2 0 2 6**

Instrument	Last	Net Change	High	Low	Volume
S & P 500	6,617.00	-34.00	6,659.25	6,609.00	62,534.00
NASDAQ 100	24,201.25	-157.25	24,384.00	24,153.00	37,196.00
Dow Jones	46,746.00	-156.00	47,034.00	46,700.00	5,364.00
Gold	4,673.90	-10.80	4,694.90	4,641.40	20,175.00
Silver	72.69	-0.16	73.51	71.67	4,321.00
Copper	5.60	0.02	5.70	5.57	23,971.00
Crude Oil	116.41	4.00	116.56	112.51	33,679.00
Platinum	1,977.50	-5.70	2,017.00	1,949.50	8,924.00
Palladium	1,491.20	-16.20	1,528.00	1,477.00	2,432.00
Natural Gas	2.80	-0.01	2.81	2.79	2,768.00
Wheat	594-0	-3.00	599-0	592-6	1,920.00
Soy Beans	1167-6	1.00	1168-2	1163-6	2,848.00
Corn	453-6	-2.00	455-0	452-2	6,783.00

**Daily Swings (The Pivot Levels)**

Instrument	Trading Range						
	S3	S2	S1	Pivot	R1	R2	R3
Dow Jones	45,158.88	45,528.06	46,016.36	46385.54	46,873.84	47,243.02	47,731.32
S & P 500	6,377.48	6,426.21	6,504.45	6553.18	6,631.42	6,680.15	6,758.39
NASDAQ 100	23,116.22	23,314.41	23,679.97	23878.16	24,243.72	24,441.91	24,807.48
Gold	4,524.50	4,575.55	4,630.55	4681.60	4,736.60	4,787.65	4,842.65
Silver	69.88	70.80	71.90	72.81	73.91	74.83	75.92
Copper	5.43	5.50	5.56	5.63	5.68	5.75	5.80
Crude Oil	105.11	107.03	110.44	112.36	115.77	117.69	121.10
Platinum	1,896.11	1,926.98	1,955.21	1986.0	2,014.31	2,045.18	2,073.41
Palladium	1,415.50	1,445.75	1,467.50	1497.7	1,519.50	1,549.75	1,571.50
Natural Gas	2.66	2.72	2.76	2.81	2.86	2.91	2.95
Wheat	578.94	583.72	589.74	594.52	600.54	605.32	611.34
Cotton	69.84	70.31	70.99	71.46	72.14	72.61	73.29
Corn	444.10	446.24	450.12	452.26	456.14	458.28	462.17

**Source:** - News & Quotes (Reuters, Investing, Bloomberg, FXStreet, Barchart)

**Disclaimer:** This document has been prepared by IGI Finex Securities Limited and is for information purposes only. Whilst every effort has been made to ensure that all the information (including any recommendations or opinions expressed) contained in this document (the information) is not misleading or unreliable, IGI Finex Securities Limited makes no representation as to the accuracy or completeness of the information. Neither IGI Finex Securities Limited nor any director, officer or employee of IGI Finex Securities Limited shall in any manner be liable or responsible for any loss that may be occasioned as consequence of a party relying on the information. This document takes no account of the investment objectives, financial situation and particular needs of investors, who shall seek further professional advice before making any investment decision. This document and the information may not be reproduced, distributed or published by any recipient for any purpose.

# Contact Details

## Commodity Team

Zaeem Haider Khan	Head of Commodities	Tel: (+92-21) 35301405	zaeem.haider@igi.com.pk
Shakeel Ahmad	Branch Manager – Faisalabad	Tel: (+92-41) 2540843-45	shakeel.ahmad1@igi.com.pk
Ehsan Ul Haq	Trader – Lahore	Tel: (+92-42) 3830559-68	ehsan.haq@igi.com.pk
Dil Muhammad	Trader – Lahore	Tel: (+92-41) 2540843-45	dil.muhammad@igi.com.pk
Inamullah Shakir	Trader – Islamabad	Tel: (+92-21) 32429613-14	inam.ullah@igi.com.pk
Sheikh Muhammad Imran	Trader – Karachi	Tel: (+92-21) 35301684	imran.ahmed@igi.com.pk
Asif Saleem	Branch Manager – Rahim Yar Khan	Tel: (+92-68) 5871652-6	asif.saleem@igi.com.pk
Mahtab Ali	Branch Manager – Multan	Tel: (+92-61) 4512003	mahtab.ali@igi.com.pk

## Research Team

Abdullah Farhan	Head of Research	Tel: (+92-21) 111-234-234 Ext: 912	abdullah.farhan@igi.com.pk
Sakina Makati	Research Analyst	Tel: (+92-21) 111-234-234 Ext: 810	sakina.makati@igi.com.pk
Syed Muzammil Hassan Rizvi	Research Analyst	Tel: (+92-21) 111-234-234 Ext: 569	muzammil.rizvi@igi.com.pk
Sufyan Siddiqui	Database Officer	Tel: (+92-21) 111-234-234 Ext: 888	sufyan.siddiqui@igi.com.pk

## IGI Finex Securities Limited

Trading Rights Entitlement Certificate (TREC) Holder of Pakistan Stock Exchange Limited |  
Corporate member of Pakistan Mercantile Exchange Limited  
Website: [www.igisecurities.com.pk](http://www.igisecurities.com.pk)

### Head Office

Suite No 701-713, 7th Floor, The Forum, G-20,  
Khayaban-e-Jami Block-09, Clifton, Karachi-75600  
UAN: (+92-21) 111-444-001 | (+92-21) 111-234-234  
Fax: (+92-21) 35309169, 35301780

### Lahore Office

Shop # G-009, Ground Floor,  
Packages Mall  
Tel: (+92-42) 38303560-69  
Fax: (+92-42) 38303559

### Islamabad Office

3<sup>rd</sup> Floor, Kamran Centre,  
Block- B, Jinnah Avenue, Blue Area  
Tel: (+92-51) 2604861-2, 2604864,  
2273439  
Fax: (+92-51) 2273861

### Faisalabad Office

Office No. 2, 5 & 8, Ground Floor, The  
Regency International 949, The Mall  
Faisalabad  
Tel: (+92-41) 2540843-45

### Rahim Yar Khan Office

Plot # 12, Basement of Khalid Market,  
Model Town, Town Hall Road  
Tel: (+92-68) 5871652-3  
Fax: (+92-68) 5871651

### Multan Office

Mezzanine Floor, Abdali Tower,  
Abdali Road  
Tel: (92-61) 4512003, 4571183