

Commodities and Indices Market View

Tuesday, December 9, 2025



Technicals



S&P 500	RSI (20:80)	Sto Fast
	57.20	94.05% 92.49%



Dow Jones	RSI (20:80)	Sto Fast
	57.08	86.75% 89.29%

US Stock Market

DJIA	S&P 500	NASDAQ
47,739.32	6,846.51	23,545.90
-0.45%	-0.35%	-0.14%

Wall Street's main indexes closed lower on Monday, with most S&P 500 industry sectors in the red, while Treasury yields gained as investors waited nervously for the Federal Reserve monetary policy update due in two days.

The Dow Jones Industrial Average (.DJI), fell 215.67 points, or 0.45%, to 47,739.32, the S&P 500 (.SPX), lost 23.89 points, or 0.35%, to 6,846.51 and the Nasdaq Composite (.IXIC), lost 32.22 points, or 0.14%, to 23,545.90.

Declining issues outnumbered advancers by a 2.04-to-1 ratio on the NYSE, where there were 167 new highs and 68 new lows.

On the Nasdaq, 2,092 stocks rose and 2,672 fell as declining issues outnumbered advancers by a 1.28-to-1 ratio.

The S&P 500 posted 20 new 52-week highs and 10 new lows, while the Nasdaq Composite recorded 149 new highs and 79 new lows.

On U.S. exchanges, 16.12 billion shares changed hands, compared with the 17.52 billion average for the last 20 sessions.

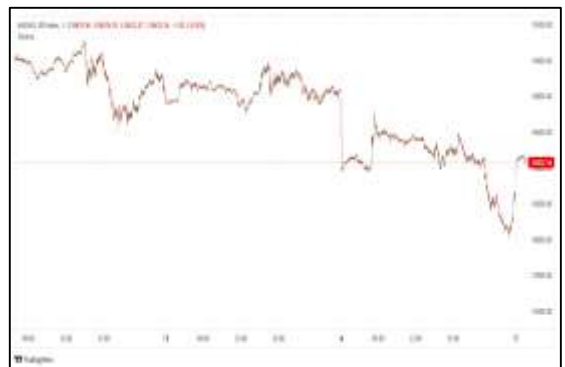
Major Economic Releases for Today

Period	Event	GMT	Forecast	Previous
DEC	Interest Rate Projections - 1st year	12:00	--	3.40%
DEC	Interest Rate Projections - 2nd year	12:00	--	3.10%
DEC	Interest Rate Projections - 3rd year	12:00	--	3.10%
DEC	Interest Rate Projections - Current	12:00	--	3.60%
DEC	Interest Rate Projections - Longer	12:00	--	3.00%

Dow Jones Industrial Average

At the close in NYSE, the Dow Jones Industrial Average declined 0.45%. The best performers of the session on the Dow Jones Industrial Average were Walt Disney Company (NYSE:DIS), which rose 2.21% or 2.33 points to trade at 107.63 at the close. Meanwhile, Boeing Co (NYSE:BA) added 2.17% or 4.38 points to end at 206.27 and NVIDIA Corporation (NASDAQ:NVDA) was up 1.73% or 3.16 points to 185.55 in late trade.

The worst performers of the session were Procter & Gamble Company (NYSE:PG), which fell 3.55% or 5.09 points to trade at 138.36 at the close. Nike Inc (NYSE:NKE) declined 3.52% or 2.32 points to end at 63.54 and Amgen Inc (NASDAQ:AMGN) was down 2.63% or 8.66 points to 321.23.



NASDAQ 100

At the close in NYSE, the NASDAQ Composite index declined 0.14%. The top performers on the NASDAQ Composite were Top Wealth Group Holding Ltd (NASDAQ:TWG) which rose 271.16% to 22.01, Orangecloud Technology Inc (NASDAQ:ORKT) which was up 150.54% to settle at 2.33 and Wave Life Sciences Ltd (NASDAQ:WVE) which gained 147.26% to close at 18.52.

The worst performers were SMX Security Matters Ord Shs Class A (NASDAQ:SMX) which was down 59.09% to 135.82 in late trade, Meihua International Medical Technologies Co Ltd (NASDAQ:MHUA) which lost 45.72% to settle at 7.61 and GRI Bio Inc (NASDAQ:GRI) which was down 34.47% to 1.35 at the close.



OIL

Oil prices edged down on Tuesday, extending losses from the 2% drop in the previous session, with markets keeping a close eye on peace talks to end Russia's war in Ukraine and a looming decision on U.S. interest rates.

Brent crude futures were down 8 cents, or 0.1%, to \$62.41 a barrel at 0409 GMT. U.S. West Texas Intermediate crude was at \$58.75, down 13 cents, or 0.2%. Both contracts fell by more than \$1 a barrel on Monday.



Precious and Base Metals

Gold traded flat on Tuesday as investors had largely priced in a Federal Reserve rate cut, while bracing for signals that the U.S. central bank may pursue a milder-than-expected easing cycle at its two-day policy meeting starting later in the day.

Spot gold held steady at \$4,186.99 per ounce, as of 0231 GMT. U.S. gold futures for December delivery fell 0.1% to \$4,215.80 per ounce.



Lower interest rates tend to favour non-yielding assets such as gold.

Elsewhere, silver was flat at \$58.10 per ounce, after hitting a record high of \$59.32 on Friday.



Platinum gained 0.5% to \$1,650.20, while palladium rose 0.4% at \$1,471.25.

Traditional Agricultures

Soybeans posted losses of 8 to 11 ½ cents across most contracts on Monday. The cmdtyView national average Cash Bean price was 11 1/2 cents lower at \$10.23.



Corn futures found weaker trade on Monday as traders were squaring up ahead of a Tuesday USDA report. Contracts were down fractionally to 2 cents. The CmdtyView national average Cash Corn price was down 1 1/4 cents at \$3.98 1/4.



The wheat complex was mixed to mostly lower across most contracts on Monday. Chicago SRW futures were down 1 to 2 cents. KC HRW futures saw Monday losses of 2 to 5 cents. MPLS spring wheat was steady to 2 cents lower.

State Crop Progress report showed Kansas winter wheat ratings up 4% to 70% gd/ex, with the Brugler500 index up 9 points to 375.

Future Settlement Price Tuesday, December 09th , 2 0 2 5					
Instrument	Last	Net Change	High	Low	Volume
S & P 500	6,862.50	6.75	6,868.50	6,859.00	26,277.00
NASDAQ 100	25,697.00	33.00	25,729.50	25,675.25	20,306.00
Dow Jones	47,801.00	8.00	47,824.00	47,760.00	3,658.00
Gold	4,223.60	5.90	4,227.60	4,214.40	21,212.00
Silver	58.84	0.44	58.99	58.29	9,094.00
Copper	5.44	-0.02	5.50	5.40	33,766.00
Crude Oil	58.76	-0.12	58.90	58.69	6,418.00
Platinum	1,660.40	-0.10	1,683.00	1,648.20	25,630.00
Palladium	1,515.80	13.60	1,541.00	1,494.00	4,832.00
Natural Gas	4.85	-0.06	4.88	4.83	4,234.00
Wheat	536-4	-5.00	536-6	534-0	1,110.00
Soy Beans	1092-6	-1.00	1094-6	1091-6	3,778.00
Corn	444-4	-6.00	445-0	443-4	4,410.00

Daily Swings (The Pivot Levels)							
			Trading Range				
Instrument	S3	S2	S1	Pivot	R1	R2	R3
Dow Jones	47,557.91	47,593.84	47,632.59	47,668.52	47,707.27	47,743.20	47,781.95
S & P 500	6,813.85	6,820.04	6,827.15	6,833.34	6,840.45	6,846.64	6,853.75
NASDAQ 100	25,478.67	25,505.54	25,530.86	25,557.74	25,583.06	25,609.94	25,635.25
Gold	4,210.36	4,214.53	4,219.16	4,223.33	4,227.96	4,232.13	4,236.76
Silver	58.21	58.40	58.61	58.80	59.01	59.20	59.41
Copper	5.37	5.38	5.40	5.41	5.43	5.44	5.45
Crude Oil	58.66	58.68	58.72	58.74	58.78	58.80	58.84
Platinum	1,649.86	1,653.53	1,658.71	1,662.3	1,667.56	1,671.23	1,676.41
Palladium	1,502.59	1,506.17	1,511.34	1,514.9	1,520.09	1,523.67	1,528.84
Natural Gas	4.82	4.83	4.84	4.85	4.86	4.87	4.87
Wheat	535.56	535.78	535.96	536.18	536.36	536.58	536.76
Cotton	63.72	63.75	63.77	63.60	63.82	63.85	63.87
Corn	443.53	443.70	443.91	444.08	444.28	444.45	444.66

Source: - News & Quotes (Reuters, Investing, Bloomberg, FXStreet, Barchart)

Disclaimer: This document has been prepared by IGI Finex Securities Limited and is for information purposes only. Whilst every effort has been made to ensure that all the information (including any recommendations or opinions expressed) contained in this document (the information) is not misleading or unreliable, IGI Finex Securities Limited makes no representation as to the accuracy or completeness of the information. Neither IGI Finex Securities Limited nor any director, officer or employee of IGI Finex Securities Limited shall in any manner be liable or responsible for any loss that may be occasioned as consequence of a party relying on the information. This document takes no account of the investment objectives, financial situation and particular needs of investors, who shall seek further professional advice before making any investment decision. This document and the information may not be reproduced, distributed or published by any recipient for any purpose.

Contact Details

Commodity Team

Zaeem Haider Khan	Head of Commodities	Tel: (+92-21) 35301405	zaeem.haider@igi.com.pk
Shakeel Ahmad	Branch Manager – Faisalabad	Tel: (+92-41) 2540843-45	shakeel.ahmad1@igi.com.pk
Ehsan Ul Haq	Trader – Lahore	Tel: (+92-42) 3830559-68	ehsan.haq@igi.com.pk
Dil Muhammad	Trader – Lahore	Tel: (+92-41) 2540843-45	dil.muhammad@igi.com.pk
Inamullah Shakir	Trader – Islamabad	Tel: (+92-21) 32429613-14	inam.ullah@igi.com.pk
Sheikh Muhammad Imran	Trader – Karachi	Tel: (+92-21) 35301684	imran.ahmed@igi.com.pk
Asif Saleem	Branch Manager – Rahim Yar Khan	Tel: (+92-68) 5871652-6	asif.saleem@igi.com.pk
Mahtab Ali	Branch Manager – Multan	Tel: (+92-61) 4512003	mahtab.ali@igi.com.pk

Research Team

Abdullah Farhan	Head of Research	Tel: (+92-21) 111-234-234 Ext: 912	abdullah.farhan@igi.com.pk
Sakina Makati	Research Analyst	Tel: (+92-21) 111-234-234 Ext: 810	sakina.makati@igi.com.pk
Laraib Nisar	Research Analyst	Tel: (+92-21) 111-234-234 Ext: 974	laraib.nisar@igi.com.pk
Sania Bajwa	Research Analyst	Tel: (+92-21) 111-234-234 Ext: 569	sania.bajwa@igi.com.pk
Sufyan Siddiqui	Database Officer	Tel: (+92-21) 111-234-234 Ext: 888	sufyan.siddiqui@igi.com.pk

IGI Finex Securities Limited

Trading Rights Entitlement Certificate (TREC) Holder of Pakistan Stock Exchange Limited |

Corporate member of Pakistan Mercantile Exchange Limited

Website: www.igisecurities.com.pk

Head Office

Suite No 701-713, 7th Floor, The Forum, G-20,
Khayaban-e-Jami Block-09, Clifton, Karachi-75600

UAN: (+92-21) 111-444-001 | (+92-21) 111-234-234

Fax: (+92-21) 35309169, 35301780

Lahore Office

Shop # G-009, Ground Floor,
Packages Mall

Tel: (+92-42) 38303560-69

Fax: (+92-42) 38303559

Islamabad Office

3rd Floor, Kamran Centre,
Block- B, Jinnah Avenue, Blue Area
Tel: (+92-51) 2604861-2, 2604864,
2273439

Fax: (+92-51) 2273861

Faisalabad Office

Office No. 2, 5 & 8, Ground Floor, The
Regency International 949, The Mall
Faisalabad

Tel: (+92-41) 2540843-45

Rahim Yar Khan Office

Plot # 12, Basement of Khalid Market,
Model Town, Town Hall Road

Tel: (+92-68) 5871652-3

Fax: (+92-68) 5871651

Multan Office

Mezzanine Floor, Abdali Tower,
Abdali Road

Tel: (92-61) 4512003, 4571183

IGI Finex Securities Limited

© Copyright 2024 IGI Finex Securities Limited