

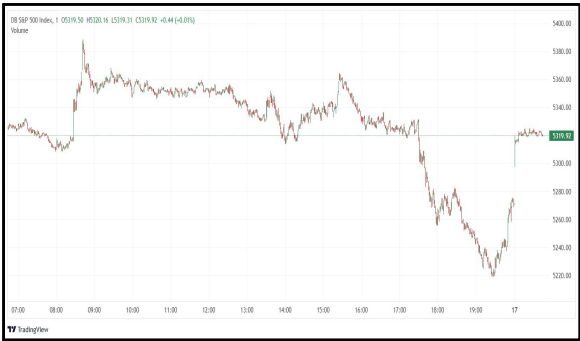
# Commodities and Indices Market View

Tuesday, September 9, 2025

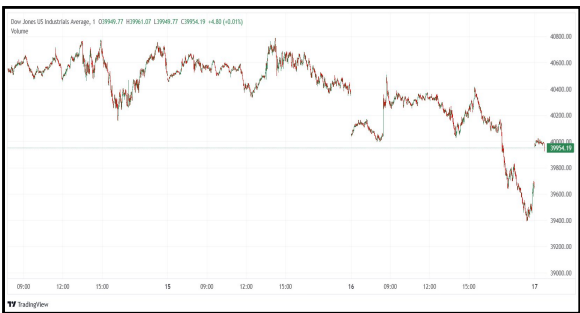


SERVING YOU SINCE 1994

## Technicals



S&P 500	RSI (20:80)	Sto Fast
	59.59%	76.19% 83.12%



Dow Jones	RSI (20:80)	Sto Fast
	59.34%	73.30% 78.66%

## US Stock Market

DJIA	S&P 500	NASDAQ
45,514.95	6,495.15	21,798.70
+0.25%	+0.21%	+0.45%

The Nasdaq notched a record high close on Monday, lifted by a rally in Broadcom, while the S&P 500 also gained as investors bet the Federal Reserve will soon lower borrowing costs to shore up economic growth.

The S&P 500 climbed 0.21% to end at 6,495.15 points. The Nasdaq gained 0.45% to 21,798.70 points, its highest close ever. The Dow Jones Industrial Average rose 0.25% to 45,514.95 points. For the week, the Dow fell 0.3%, the S&P 500 gained 0.3% and the Nasdaq rose 1.1%.

The S&P 500 is up about 10% so far in 2025, and the Nasdaq has climbed about 13%.

Declining stocks outnumbered rising ones within the S&P 500 (.AD.SPX), by a 1.0-to-one ratio.

The S&P 500 posted 18 new highs and eight new lows; the Nasdaq recorded 136 new highs and 95 new lows.

Volume on U.S. exchanges was relatively heavy, with 16.2 billion shares traded, compared to an average of 16.1 billion shares over the previous 20 sessions.

## Major Economic Releases for Today

Period	Event	GMT	Forecast	Previous
AUG	Exports (YoY) (Aug)	3:00	5.00%	7.20%
AUG	Exports (YoY) CNY (Aug)	3:00	--	8.00%
AUG	Imports (YoY) (Aug)	3:00	3.00%	4.10%
AUG	Imports (YoY) CNY (Aug)	3:00	--	4.80%
AUG	Consumer Price Index (YoY) (Aug)	1:30	-0.20%	0.00%



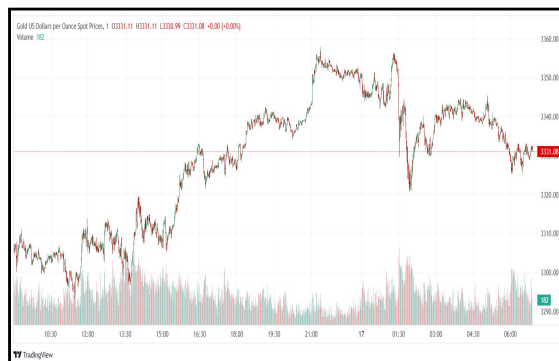
## Precious and Base Metals

Gold prices scaled a fresh peak on Tuesday, as a weaker dollar and a dip in bond yields amid growing bets for a Federal Reserve rate cut this month lifted demand for the precious metal.

Spot gold gained 0.4% to \$3,651.38 per ounce as of 0249 GMT. U.S. gold futures for December delivery added 0.4% to \$3,690.90.

Gold prices have gained 38% so far this year, following a 27% jump in 2024, bolstered by a soft dollar, strong central bank accumulation, dovish monetary settings and heightened global uncertainty.

Elsewhere, spot silver rose 0.1% to \$41.36 per ounce. Platinum gained 1% to \$1,396.42 and palladium climbed 1.4% to \$1,149.47.



## Traditional Agricultures

Soybeans rallied off some early Monday steady trade, to close out the session 6 to 7 ¼ cents higher. There were another 76 deliveries reported overnight. The cmdtView national average Cash Bean price is up 7 cents at \$9.56 3/4.

Corn futures slipped lower into the Friday close, failing to hold the midday gains. Contracts were fractionally to 2 cents lower across most contracts, as December was 2 ¼ cents lower on the week. The CmdtView national average Cash Corn price was down 2 at \$3.73 ¼.

The wheat complex saw strength on Monday, with the hard red contracts pushing higher. CBT soft red wheat futures were 4 to 5 cents in the green. KC HRW futures were 10 to 12 cents higher across the nearbys.



### Future Settlement Price Tuesday, September 9th, 2025

Instrument	Last	Net Change	High	Low	Volume
S & P 500	6,513.50	7.50	6,515.50	6,504.00	32,112.00
NASDAQ 100	23,835.25	35.50	23,848.25	23,790.75	18,078.00
Dow Jones	45,613.00	38.00	45,640.00	45,558.00	2,287.00
Gold	3,691.50	14.10	3,694.90	3,669.80	40,840.00
Silver	41.98	0.08	42.05	41.83	6,501.00
Copper	4.56	0.01	4.58	4.53	21,752.00
Crude Oil	62.67	0.41	62.67	62.37	6,239.00
Platinum	1,385.70	-1.00	1,416.50	1,373.70	29,094.00
Palladium	1,156.10	27.20	1,165.50	1,117.50	4,518.00
Natural Gas	3.08	-0.01	3.10	3.07	2,602.00
Wheat	523-0	-6.00	525-0	522-2	1,411.00
Soy Beans	1032-6	-1.00	1035-6	1031-6	6,075.00
Corn	420-6	-1.00	421-6	420-2	5,502.00

### Daily Swings (The Pivot Levels)

Instrument	Trading Range						
	S3	S2	S1	Pivot	R1	R2	R3
Dow Jones	44,593.28	44,902.53	45,151.70	45460.9	45,710.12	46,019.37	46,268.54
S & P 500	6,350.76	6,397.37	6,439.43	6486.04	6,528.10	6,574.71	6,616.77
NASDAQ 100	23,080.16	23,277.74	23,465.09	23662.67	23,850.01	24,047.60	24,234.94
Gold	3,571.80	3,596.75	3,635.80	3660.75	3,699.80	3,724.75	3,763.80
Silver	39.97	40.52	41.24	41.80	42.52	43.07	43.79
Copper	4.51	4.52	4.54	4.55	4.57	4.58	4.59
Crude Oil	60.27	61.06	61.76	62.55	63.25	64.04	64.74
Platinum	1,329.00	1,351.35	1,371.80	1,394.1	1,414.60	1,436.95	1,457.40
Palladium	1,080.84	1,099.17	1,128.84	1,147.1	1,176.84	1,195.17	1,224.84
Natural Gas	2.89	2.97	3.03	3.12	3.18	3.26	3.32
Wheat	510.25	513.25	518.50	521.50	526.75	529.75	535.00
Cotton	65.41	65.66	65.94	66.19	66.47	66.72	67.00
Corn	409.84	412.42	417.09	419.67	424.34	426.92	431.59

**Source:** - News & Quotes (Reuters, Investing, Bloomberg, FXStreet, Barchart)

**Disclaimer:** This document has been prepared by IGI Finex Securities Limited and is for information purposes only. Whilst every effort has been made to ensure that all the information (including any recommendations or opinions expressed) contained in this document (the information) is not misleading or unreliable, IGI Finex Securities Limited makes no representation as to the accuracy or completeness of the information. Neither IGI Finex Securities Limited nor any director, officer or employee of IGI Finex Securities Limited shall in any manner be liable or responsible for any loss that may be occasioned as consequence of a party relying on the information. This document takes no account of the investment objectives, financial situation and particular needs of investors, who shall seek further professional advice before making any investment decision. This document and the information may not be reproduced, distributed or published by any recipient for any purpose.

# Contact Details

## Commodity Team

Zaeem Haider Khan	Head of Commodities	Tel: (+92-21) 35301405	zaeem.haider@igi.com.pk
Shakeel Ahmad	Branch Manager – Faisalabad	Tel: (+92-41) 2540843-45	shakeel.ahmad1@igi.com.pk
Ehsan Ul Haq	Trader – Lahore	Tel: (+92-42) 3830559-68	ehsan.haq@igi.com.pk
Dil Muhammad	Trader – Lahore	Tel: (+92-41) 2540843-45	dil.muhammad@igi.com.pk
Inamullah Shakir	Trader – Islamabad	Tel: (+92-21) 32429613-14	inam.ullah@igi.com.pk
Sheikh Muhammad Imran	Trader – Karachi	Tel: (+92-21) 35301684	imran.ahmed@igi.com.pk
Asif Saleem	Branch Manager – Rahim Yar Khan	Tel: (+92-68) 5871652-6	asif.saleem@igi.com.pk
Mahtab Ali	Branch Manager – Multan	Tel: (+92-61) 4512003	mahtab.ali@igi.com.pk

## Research Team

Abdullah Farhan	Head of Research	Tel: (+92-21) 111-234-234 Ext: 912	abdullah.farhan@igi.com.pk
Sakina Makati	Research Analyst	Tel: (+92-21) 111-234-234 Ext: 810	sakina.makati@igi.com.pk
Laraib Nisar	Research Analyst	Tel: (+92-21) 111-234-234 Ext: 974	laraib.nisar@igi.com.pk
Sania Bajwa	Research Analyst	Tel: (+92-21) 111-234-234 Ext: 569	sania.bajwa@igi.com.pk
Sufyan Siddiqui	Database Officer	Tel: (+92-21) 111-234-234 Ext: 888	sufyan.siddiqui@igi.com.pk

## IGI Finex Securities Limited

Trading Rights Entitlement Certificate (TREC) Holder of Pakistan Stock Exchange Limited |

Corporate member of Pakistan Mercantile Exchange Limited

Website: [www.igisecurities.com.pk](http://www.igisecurities.com.pk)

### Head Office

Suite No 701-713, 7th Floor, The Forum, G-20,  
Khayaban-e-Jami Block-09, Clifton, Karachi-75600

UAN: (+92-21) 111-444-001 | (+92-21) 111-234-234

Fax: (+92-21) 35309169, 35301780

### Lahore Office

Shop # G-009, Ground Floor,  
Packages Mall

Tel: (+92-42) 38303560-69

Fax: (+92-42) 38303559

### Islamabad Office

3<sup>rd</sup> Floor, Kamran Centre,  
Block- B, Jinnah Avenue, Blue Area  
Tel: (+92-51) 2604861-2, 2604864,  
2273439

Fax: (+92-51) 2273861

### Faisalabad Office

Office No. 2, 5 & 8, Ground Floor, The  
Regency International 949, The Mall  
Faisalabad

Tel: (+92-41) 2540843-45

### Rahim Yar Khan Office

Plot # 12, Basement of Khalid Market,  
Model Town, Town Hall Road

Tel: (+92-68) 5871652-3

Fax: (+92-68) 5871651

### Multan Office

Mezzanine Floor, Abdali Tower,  
Abdali Road

Tel: (92-61) 4512003, 4571183

IGI Finex Securities Limited

© Copyright 2024 IGI Finex Securities Limited