

# Commodities and Indices Market View

Thursday, April 10, 2025



SERVING YOU SINCE 1994

## Technicals



<b>S&amp;P 500</b>	<b>RSI (20:80)</b>	<b>Sto Fast</b>
	65.32%	D 18.75% K 34.89%



<b>Dow Jones</b>	<b>RSI (20:80)</b>	<b>Sto Fast</b>
	45.77%	D 18.47% K 34.24%

## US Stock Market

DJIA	S&P 500	NASDAQ
40,608.45	5,456.90	17,124.97
+7.87%	+9.52%	+12.16%

The S&P 500 soared 9.5% on Wednesday for its biggest daily gain since 2008 after U.S. President Donald Trump declared an immediate 90-day tariff pause for many countries, bringing some relief to investors worried about the global economic impact of U.S. trade policies.

The rally, which followed Wall Street's biggest four-day percentage loss since the pandemic, was triggered by an afternoon announcement that Trump would temporarily lower many new tariffs, while he raised the levy on Chinese imports to 125%. The Dow Jones Industrial Average (.DJI), rose 2,962.86 points, or 7.87%, to 40,608.45. The S&P 500 (.SPX), gained 474.13 points, or 9.52%, to 5,456.90 for its biggest daily gain since October 2008, during the global financial crisis. The Nasdaq Composite (.IXIC), added 1,857.06 points, or 12.16%, to 17,124.97, for its biggest gain since January 2001, during the dotcom market bubble.

## Major Economic Releases for Today

Period	Event	GMT	Forecast	Previous
MAR	USD Consumer Price Index (MoM)	0:30	0.1%	0.2%
MAR	USD Consumer Price Index (YoY)	0:30	2.6%	2.8%
MAR	USD Consumer Price Index ex Food & Energy (YoY)	0:30	3.0%	3.1%
MAR	EUR Harmonized Index of Consumer Prices (YoY)	18:00	2.3%	2.3%
MAR	EUR ECB's President Lagarde speech	21:45	-	-

## Dow Jones Industrial Average

At the close in NYSE, the Dow Jones Industrial Average rose 7.87%. The best performers of the session on the Dow Jones Industrial Average were NVIDIA Corporation (NASDAQ:NVDA), which rose 18.59% or 17.90 points to trade at 114.20 at the close. Meanwhile, Boeing Co (NYSE:BA) added 15.34% or 21.39 points to end at 160.78 and Apple Inc (NASDAQ:AAPL) was up 15.33% or 26.43 points to 198.85 in late trade. The worst performers of the session were Johnson & Johnson (NYSE:JNJ), which rose 0.65% or 0.97 points to trade at 150.97 at the close. McDonald’s Corporation (NYSE:MCD) added 1.36% or 4.08 points to end at 303.91 and Verizon Communications Inc (NYSE:VZ) was up 1.71% or 0.72 points to 42.89.



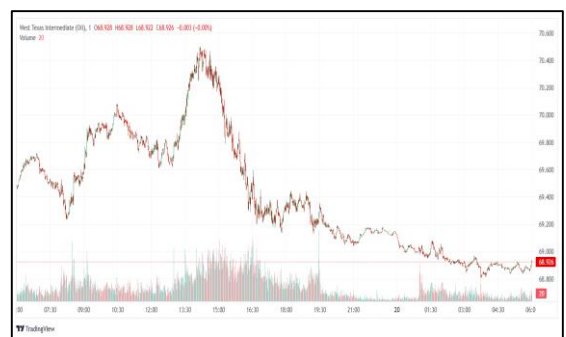
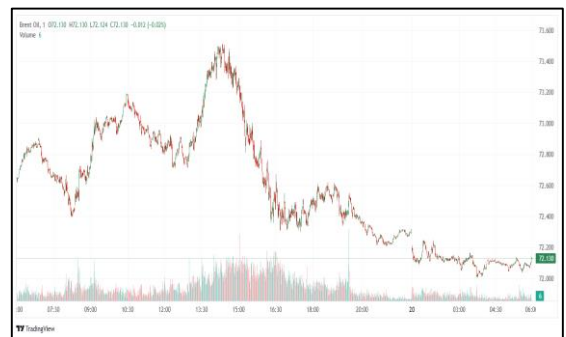
## NASDAQ 100

At the close in NYSE, the NASDAQ Composite index added 12.16%. The top performers on the NASDAQ Composite were Venus Concept Inc (NASDAQ:VERO) which rose 210.07% to 8.93, BeLive Holdings (NASDAQ:BLIV) which was up 105.13% to settle at 6.40 and Antelope Enterprise Holdings Ltd (NASDAQ:AEHL) which gained 104.13% to close at 4.45. The worst performers were Femto Technologies Inc (NASDAQ:FMTO) which was down 98.09% to 0.05 in late trade, WW International Inc (NASDAQ:WW) which lost 62.21% to settle at 0.18 and Vincerx Pharma Inc (NASDAQ:VINC) which was down 49.24% to 0.28 at the close.



## OIL

Oil prices retreated on Thursday as U.S. President Donald Trump ramped up a trade war with China, even as he announced a 90-day pause on tariffs aimed at other countries. Brent futures fell 77 cents, or 1.18%, to \$64.71 a barrel by 0320 GMT, while U.S. West Texas Intermediate crude futures fell 65 cents, or 1.04%, to \$61.70. Following the tariff pause for most countries, the benchmark crude contracts had settled 4% higher on Wednesday after dropping as much as 7% during the session.



## Precious and Base Metals

Gold rose more than 1% on Thursday as investors flocked to safe-haven bullion after the U.S. hiked tariffs on China, the top metals consumer, escalating the already heated trade war, despite a 90-day pause on tariffs for other countries. Spot gold was up 1.5% at \$3,129.33 an ounce, as of 0514 GMT. In the previous session, bullion recorded its best day since October 2023. U.S. gold futures climbed 2.2% to \$3,145.80. U.S. President said on Wednesday that he would raise the tariff on Chinese imports to 125% from 104%. The world's two largest economies have engaged in a series of tit-for-tat tariffs over the past week. However, Trump decided to temporarily lower the hefty duties he recently imposed on several countries. Spot silver gained 0.6% to \$31.21 an ounce, platinum lost 0.3% to \$935.54, and palladium shed 1% to \$922.00.

## Traditional Agricultures

The soybean market got a late session rally on Wednesday to close the day with 19 to 21 point gains. CmdtyView's national front month Cash Bean price was up 20 3/4 cents at \$9.59 3/4. Soymeal futures were up 90 cents to \$3.50/ton, with Soy Oil futures up 120 to 141 points. The wheat complex popped from mixed midday action to close with Wednesday gains across the three exchanges. Chicago SRW futures turned green into the close, with gains of 1 to 3 cents. Kansas City HRW contracts were up 5 to 7 cents on the session. MPLS spring wheat posted 7 to 8 cent gains in the front months. Corn futures got a late session pop higher on Wednesday, following an announcement on tariff relief by President Trump. Contracts were up 4 to 6 cents across most months. The front month CmdtyView national average Cash Corn price was up 5 1/4 cent at \$4.46 1/2.



**Future Settlement Price Thursday, 10th April 2025**

Instrument	Last	Net Change	High	Low	Volume
S & P 500	5,452.00	-39.00	5,528.75	5,441.00	129,877.00
NASDAQ 100	19,047.25	-241.50	19,383.50	18,969.25	61,067.00
Dow Jones	40,703.00	-133.00	41,140.00	40,676.00	16,395.00
Gold	3,141.30	61.90	3,148.10	3,086.10	43,211.00
Silver	31.14	0.72	31.17	30.74	8,893.00
Copper	4.43	0.24	4.47	4.35	7,862.00
Crude Oil	61.73	-0.62	63.34	61.47	29,607.00
Platinum	937.80	17.90	939.00	930.20	3,405.00
Palladium	919.50	30.00	923.00	911.00	556.00
Natural Gas	3.70	-0.11	3.75	3.70	3,835.00
Wheat	541-0	-3.00	545-6	540-6	1,714.00
Soy Beans	1016-2	-1.00	1022-2	1010-6	10,070.00
Corn	480-4	3.00	482-6	479-6	14,167.00

**Daily Swings (The Pivot Levels)**

Instrument	Trading Range						
	S3	S2	S1	Pivot	R1	R2	R3
Dow Jones	34,368.02	35,735.94	36,690.76	38,058.68	39,013.50	40,381.42	41,336.24
S & P 500	4,482.58	4,696.50	4,839.63	5,053.55	5,196.68	5,410.60	5,553.73
NASDAQ 100	15,201.23	16,025.70	16,558.05	17,382.53	17,914.88	18,739.36	19,271.70
Gold	2,881.64	2,932.47	3,016.84	3,067.67	3,152.04	3,202.87	3,287.24
Silver	27.91	28.58	29.72	30.39	31.53	32.20	33.34
Copper	3.70	3.87	4.14	4.30	4.57	4.74	5.00
Crude Oil	49.38	52.25	57.60	60.47	65.82	68.69	74.04
Platinum	872.74	886.42	911.54	925.22	950.34	964.02	989.14
Palladium	853.16	865.83	891.16	903.83	929.16	941.83	967.16
Natural Gas	2.95	3.14	3.44	3.64	3.93	4.13	4.43
Wheat	528.34	532.42	537.84	541.92	547.34	551.42	556.84
Cotton	62.17	63.21	64.92	65.96	67.67	68.71	70.42
Corn	457.91	461.83	467.66	471.58	477.41	481.33	487.16

**Source:** - News & Quotes (Reuters, Investing, Bloomberg, FXStreet, Barchart)

**Disclaimer:** This document has been prepared by IGI Finex Securities Limited and is for information purposes only. Whilst every effort has been made to ensure that all the information (including any recommendations or opinions expressed) contained in this document (the information) is not misleading or unreliable, IGI Finex Securities Limited makes no representation as to the accuracy or completeness of the information. Neither IGI Finex Securities Limited nor any director, officer or employee of IGI Finex Securities Limited shall in any manner be liable or responsible for any loss that may be occasioned as consequence of a party relying on the information. This document takes no account of the investment objectives, financial situation and particular needs of investors, who shall seek further professional advice before making any investment decision. This document and the information may not be reproduced, distributed or published by any recipient for any purpose.

# Contact Details

## Commodity Team

Zaeem Haider Khan	Head of Commodities	Tel: (+92-21) 35301405	zaeem.haider@igi.com.pk
Shakeel Ahmad	Branch Manager – Faisalabad	Tel: (+92-41) 2540843-45	shakeel.ahmad1@igi.com.pk
Ehsan Ul Haq	Trader – Lahore	Tel: (+92-42) 3830559-68	ehsan.haq@igi.com.pk
Dil Muhammad	Trader – Lahore	Tel: (+92-41) 2540843-45	dil.muhammad@igi.com.pk
Inamullah Shakir	Trader – Islamabad	Tel: (+92-21) 32429613-14	inam.ullah@igi.com.pk
Sheikh Muhammad Imran	Trader – Karachi	Tel: (+92-21) 35301684	imran.ahmed@igi.com.pk
Asif Saleem	Branch Manager – Rahim Yar Khan	Tel: (+92-68) 5871652-6	asif.saleem@igi.com.pk
Mahtab Ali	Branch Manager – Multan	Tel: (+92-61) 4512003	mahtab.ali@igi.com.pk

## Research Team

Abdullah Farhan	Head of Research	Tel: (+92-21) 111-234-234 Ext: 912	abdullah.farhan@igi.com.pk
Sakina Makati	Research Analyst	Tel: (+92-21) 111-234-234 Ext: 810	sakina.makati@igi.com.pk
Laraib Nisar	Research Analyst	Tel: (+92-21) 111-234-234 Ext: 974	laraib.nisar@igi.com.pk

## IGI Finex Securities Limited

Trading Rights Entitlement Certificate (TREC) Holder of Pakistan Stock Exchange Limited |

Corporate member of Pakistan Mercantile Exchange Limited

Website: [www.igisecurities.com.pk](http://www.igisecurities.com.pk)

### Head Office

Suite No 701-713, 7th Floor, The Forum, G-20, Khayaban-e-Jami Block-09, Clifton, Karachi-75600

UAN: (+92-21) 111-444-001 | (+92-21) 111-234-234

Fax: (+92-21) 35309169, 35301780

### Lahore Office

Shop # G-009, Ground Floor, Packages Mall

Tel: (+92-42) 38303560-69

Fax: (+92-42) 38303559

### Islamabad Office

3<sup>rd</sup> Floor, Kamran Centre, Block- B, Jinnah Avenue, Blue Area  
Tel: (+92-51) 2604861-2, 2604864, 2273439

Fax: (+92-51) 2273861

### Faisalabad Office

Office No. 2, 5 & 8, Ground Floor, The Regency International 949, The Mall Faisalabad

Tel: (+92-41) 2540843-45

### Rahim Yar Khan Office

Plot # 12, Basement of Khalid Market, Model Town, Town Hall Road

Tel: (+92-68) 5871652-3

Fax: (+92-68) 5871651

### Multan Office

Mezzanine Floor, Abdali Tower, Abdali Road

Tel: (92-61) 4512003, 4571183

IGI Finex Securities Limited

© Copyright 2024 IGI Finex Securities Limited