

Commodities and Indices Market View

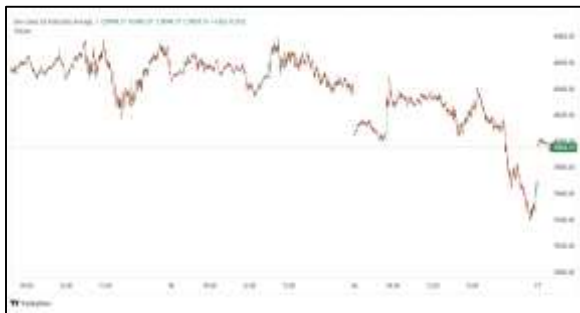
Tuesday, May 12, 2026



Technicals



S&P 500	RSI (20:80)	Sto Fast
	75.50	93.78% 93.64%



Dow Jones	RSI (20:80)	Sto Fast
	50.82	36.17% 23.75%

US Stock Market

DJIA	S&P 500	NASDAQ
49,704.47	7,412.84	26,274.13
+0.19%	+0.19%	+0.10%

U.S. stocks closed slightly higher on Monday, with AI optimism fueling upward momentum.

All three major U.S. stock indexes advanced and the S&P 500 and the Nasdaq eked out their latest in a series of all-time closing highs.

The Dow Jones Industrial Average (.DJI), rose 95.31 points, or 0.19%, to 49,704.47, the S&P 500 (.SPX), gained 13.91 points, or 0.19%, to 7,412.84 and the Nasdaq Composite (.IXIC), gained 27.05 points, or 0.10%, to 26,274.13.

Declining issues outnumbered advancers by a 1.08-to-1 ratio on the NYSE. There were 567 new highs and 144 new lows on the NYSE.

On the Nasdaq, 2,129 stocks rose and 2,704 fell as declining issues outnumbered advancers by a 1.27-to-1 ratio.

The S&P 500 posted 39 new 52-week highs and 42 new lows while the Nasdaq Composite recorded 157 new highs and 164 new lows.

Volume on U.S. exchanges was 21.42 billion shares, compared with the 17.99 billion average for the full session over the last 20 trading days.

Major Economic Releases for Today

Period	Event	GMT	Forecast	Previous
MAY	Consumer Price Index (MoM)	5:30	0.60%	0.90%
MAY	Consumer Price Index (YoY)	5:30	3.70%	3.30%
MAY	Consumer Price Index ex Food & Energy (MoM)	5:30	0.40%	0.20%
MAY	Consumer Price Index ex Food & Energy (YoY)	5:30	2.70%	2.60%
MAY	RBNZ Inflation Expectations (QoQ) (Q2)	8:00	--	2.37%

Dow Jones Industrial Average

At the close in NYSE, the Dow Jones Industrial Average added 0.19%. The best performers of the session on the Dow Jones Industrial Average were Caterpillar Inc (NYSE:CAT), which rose 3.27% or 29.35 points to trade at 926.80 at the close. Meanwhile, Honeywell International Inc (NASDAQ:HON) added 2.81% or 5.99 points to end at 219.11 and Cisco Systems Inc (NASDAQ:CSCO) was up 2.23% or 2.15 points to 98.72 in late trade.

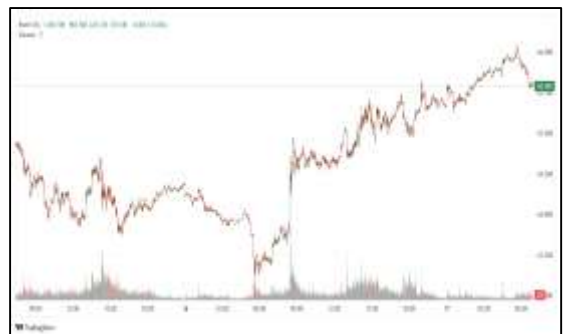


The worst performers of the session were Nike Inc (NYSE:NKE), which fell 3.96% or 1.75 points to trade at 42.39 at the close. Walt Disney Company (NYSE:DIS) declined 3.06% or 3.31 points to end at 104.71 and International Business Machines (NYSE:IBM) was down 2.70% or 6.21 points to 223.55.



NASDAQ 100

At the close in NYSE, the NASDAQ Composite index added 0.10%. The top performers on the NASDAQ Composite were Work Medical Technology Group Ltd (NASDAQ:WOK) which rose 203.88% to 3.92, PomDoctor Ltd ADR (NASDAQ:POM) which was up 97.47% to settle at 0.15 and Creative Global Technology Holdings Ltd (NASDAQ:CGTL) which gained 50.00% to close at 1.65.



The worst performers were Haoxi Health Technology Ltd (NASDAQ:HAO) which was down 93.84% to 0.05 in late trade, Republic Power Group Ltd (NASDAQ:RPGL) which lost 45.48% to settle at 0.46 and Smart Power Corp (NASDAQ:CREG) which was down 38.28% to 0.18 at the close.

OIL

Oil prices rose in early Asian trade on Tuesday as negotiations to end the war between the United States and Iran appeared fragile, with Tehran's response to a U.S. proposal highlighting stark differences that kept supply concerns alive.



Brent crude futures were up 30 cents, or 0.29%, at \$104.51 per barrel, while U.S. West Texas Intermediate gained 31 cents, or 0.32%, to \$98.38 by 0002 GMT. Both benchmarks increased nearly 2.8% on Monday.

Precious and Base Metals

Gold prices were steady on Tuesday, as markets weighed the developments in the Middle East conflict and interest rate expectations ahead of key U.S. inflation data.

Spot gold was steady at \$4,732.89 per ounce by 0246 GMT. U.S. gold futures for June delivery gained 0.3% to \$4,742.40.



While gold is considered an inflation hedge, high interest rates make yield-bearing assets more attractive, weighing on its appeal.

Spot silver was unchanged at \$86.08 per ounce, platinum slid 1.6% to \$2,098.25, and palladium was down 1% at \$1,494.



Traditional Agricultures

Soybeans saw gains of 2 ¼ to 5 ½ cents across the board on Monday. The cmdtyView national average Cash Bean price was up 5 1/4 cents at \$11.46 1/2.



Corn futures closed the Monday session with contracts up 3 to 5 cents across most contracts. The CmdtyView national average Cash Corn price was up 4 cents to \$4.34 3/4.



The wheat complex closed Monday with gains across all three markets. Chicago SRW was 10 ¾ to 15 cents higher across the board on Monday. KC HRW futures were up 8 ½ to 12 ¼ cents at the close, with front month may up a penny. MPLS spring wheat were up 5 to 10 1/4 cents at the close.

Future Settlement Price Tuesday, May 12th, 2026

Instrument	Last	Net Change	High	Low	Volume
S & P 500	7,428.00	-8.75	7,443.75	7,411.25	48,913.00
NASDAQ 100	29,340.50	-83.50	29,455.75	29,227.00	46,793.00
Dow Jones	49,786.00	-6.00	49,841.00	49,714.00	4,105.00
Gold	4,734.90	6.20	4,783.40	4,729.80	24,690.00
Silver	87.00	1.05	88.00	86.18	9,686.00
Copper	6.46	0.16	6.51	6.25	59,104.00
Crude Oil	98.85	0.78	99.28	98.00	9,403.00
Platinum	2,126.30	67.00	2,154.60	2,036.10	15,703.00
Palladium	1,518.50	30.70	1,535.50	1,474.50	6,077.00
Natural Gas	2.92	0.01	2.94	2.92	2,816.00
Wheat	641-4	3.00	642-2	636-6	4,786.00
Soy Beans	1216-2	1.00	1216-4	1211-2	5,552.00
Corn	474-6	-4.00	475-4	473-6	8,957.00

Daily Swings (The Pivot Levels)

Instrument	Trading Range						
	S3	S2	S1	Pivot	R1	R2	R3
Dow Jones	49,110.10	49,298.53	49,453.84	49,642.27	49,797.58	49,986.01	50,141.32
S & P 500	7,335.57	7,349.27	7,374.10	7,387.80	7,412.63	7,426.33	7,451.16
NASDAQ 100	28,428.69	28,589.95	28,912.47	29,073.73	29,396.25	29,557.51	29,880.02
Gold	4,571.69	4,613.64	4,695.29	4,737.24	4,818.89	4,860.84	4,942.49
Silver	74.73	77.39	82.66	85.32	90.59	93.25	98.52
Copper	6.11	6.19	6.34	6.43	6.58	6.66	6.81
Crude Oil	91.86	94.01	96.05	98.20	100.24	102.39	104.43
Platinum	1,947.15	1,991.50	2,078.55	2,122.9	2,209.95	2,254.30	2,341.35
Palladium	1,428.59	1,451.67	1,493.84	1,516.9	1,559.09	1,582.17	1,624.34
Natural Gas	2.67	2.73	2.83	2.88	2.98	3.03	3.13
Wheat	606.95	613.41	626.33	632.79	645.70	652.16	665.08
Cotton	81.27	82.76	85.27	86.76	89.27	90.76	93.27
Corn	467.49	469.44	472.22	474.17	476.94	478.90	481.67

Source: - News & Quotes (Reuters, Investing, Bloomberg, FXStreet, Barchart)

Disclaimer: This document has been prepared by IGI Finex Securities Limited and is for information purposes only. Whilst every effort has been made to ensure that all the information (including any recommendations or opinions expressed) contained in this document (the information) is not misleading or unreliable, IGI Finex Securities Limited makes no representation as to the accuracy or completeness of the information. Neither IGI Finex Securities Limited nor any director, officer or employee of IGI Finex Securities Limited shall in any manner be liable or responsible for any loss that may be occasioned as consequence of a party relying on the information. This document takes no account of the investment objectives, financial situation and particular needs of investors, who shall seek further professional advice before making any investment decision. This document and the information may not be reproduced, distributed or published by any recipient for any purpose.

Contact Details

Commodity Team

Zaeem Haider Khan	Head of Commodities	Tel: (+92-21) 35301405	zaeem.haider@igi.com.pk
Shakeel Ahmad	Branch Manager – Faisalabad	Tel: (+92-41) 2540843-45	shakeel.ahmad1@igi.com.pk
Ehsan Ul Haq	Trader – Lahore	Tel: (+92-42) 3830559-68	ehsan.haq@igi.com.pk
Dil Muhammad	Trader – Lahore	Tel: (+92-41) 2540843-45	dil.muhammad@igi.com.pk
Inamullah Shakir	Trader – Islamabad	Tel: (+92-21) 32429613-14	inam.ullah@igi.com.pk
Sheikh Muhammad Imran	Trader – Karachi	Tel: (+92-21) 35301684	imran.ahmed@igi.com.pk
Asif Saleem	Branch Manager – Rahim Yar Khan	Tel: (+92-68) 5871652-6	asif.saleem@igi.com.pk
Mahtab Ali	Branch Manager – Multan	Tel: (+92-61) 4512003	mahtab.ali@igi.com.pk

Research Team

Abdullah Farhan	Head of Research	Tel: (+92-21) 111-234-234 Ext: 912	abdullah.farhan@igi.com.pk
Sakina Makati	Research Analyst	Tel: (+92-21) 111-234-234 Ext: 810	sakina.makati@igi.com.pk
Syed Muzammil Hassan Rizvi	Research Analyst	Tel: (+92-21) 111-234-234 Ext: 569	muzammil.rizvi@igi.com.pk
Sufyan Siddiqui	Database Officer	Tel: (+92-21) 111-234-234 Ext: 888	sufyan.siddiqui@igi.com.pk

IGI Finex Securities Limited

Trading Rights Entitlement Certificate (TREC) Holder of Pakistan Stock Exchange Limited |
Corporate member of Pakistan Mercantile Exchange Limited
Website: www.igisecurities.com.pk

Head Office

Suite No 701-713, 7th Floor, The Forum, G-20,
Khayaban-e-Jami Block-09, Clifton, Karachi-75600
UAN: (+92-21) 111-444-001 | (+92-21) 111-234-234
Fax: (+92-21) 35309169, 35301780

Lahore Office

Shop # G-009, Ground Floor,
Packages Mall
Tel: (+92-42) 38303560-69
Fax: (+92-42) 38303559

Islamabad Office

3rd Floor, Kamran Centre,
Block- B, Jinnah Avenue, Blue Area
Tel: (+92-51) 2604861-2, 2604864,
2273439
Fax: (+92-51) 2273861

Faisalabad Office

Office No. 2, 5 & 8, Ground Floor, The
Regency International 949, The Mall
Faisalabad
Tel: (+92-41) 2540843-45

Rahim Yar Khan Office

Plot # 12, Basement of Khalid Market,
Model Town, Town Hall Road
Tel: (+92-68) 5871652-3
Fax: (+92-68) 5871651

Multan Office

Mezzanine Floor, Abdali Tower,
Abdali Road
Tel: (92-61) 4512003, 4571183