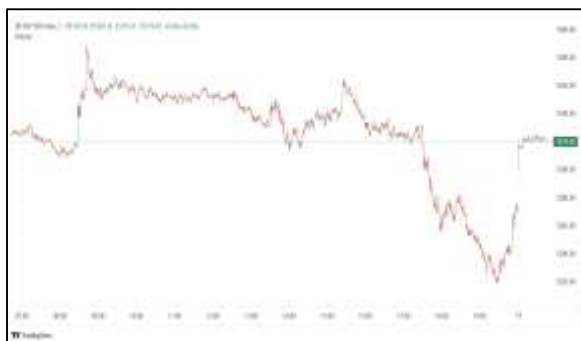


Commodities and Indices Market View

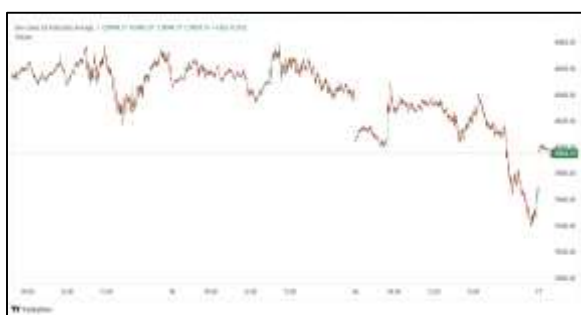
Wednesday, May 13, 2026



Technicals



| S&P 500 | RSI (20:80) | Sto Fast |
|---------|-------------|------------------|
| | 74.04 | 94.72% 95.92% |



| Dow Jones | RSI (20:80) | Sto Fast |
|-----------|-------------|------------------|
| | 61.18 | 68.94% 69.03% |

US Stock Market

| DJIA | S&P 500 | NASDAQ |
|-----------|----------|-----------|
| 49,760.56 | 7,400.96 | 26,088.20 |
| +0.11% | -0.16% | -0.71% |

The S&P 500 and the Nasdaq closed lower on Tuesday, easing from record highs as hotter-than-expected inflation data and an increasingly tenuous U.S.-Iran ceasefire prompted investors to take money off the table near the end of a robust first-quarter earnings season. Despite the selloff, the S&P 500 and the Nasdaq remain close to all-time highs.

The Dow Jones Industrial Average (.DJI), rose 56.09 points, or 0.11%, to 49,760.56, the S&P 500 (.SPX), lost 11.88 points, or 0.16%, to 7,400.96 and the Nasdaq Composite (.IXIC), shed 185.92 points, or 0.71%, to 26,088.20.

Declining issues outnumbered advancers by a 1.79-to-1 ratio on the NYSE. There were 199 new highs and 125 new lows on the NYSE. On the Nasdaq, 1,605 stocks rose and 3,134 fell as declining issues outnumbered advancers by a 1.95-to-1 ratio.

The S&P 500 posted 16 new 52-week highs and 29 new lows while the Nasdaq Composite recorded 62 new highs and 167 new lows.

Volume on U.S. exchanges was 19.63 billion shares, compared with the 18.08 billion average for the full session over the last 20 trading days.

Major Economic Releases for Today

| Period | Event | GMT | Forecast | Previous |
|--------|-------------------------------|------|----------|----------|
| MAY | Unemployment Rate | 5:30 | 6.70% | 6.70% |
| MAY | Average Hourly Earnings (MoM) | 5:30 | 0.30% | 0.20% |
| MAY | Average Hourly Earnings (YoY) | 5:30 | 3.80% | 3.50% |
| MAY | Retail Sales (MoM) | 2:00 | -0.30% | -0.20% |
| MAY | Retail Sales (YoY) | 2:00 | 1.00% | 1.70% |

Dow Jones Industrial Average

At the close in NYSE, the Dow Jones Industrial Average rose 0.11%. The best performers of the session on the Dow Jones Industrial Average were Unitedhealth Group (NYSE:UNH), which rose 3.11% or 11.95 points to trade at 396.39 at the close. Meanwhile, Walmart Inc (NASDAQ:WMT) added 2.19% or 2.79 points to end at 130.38 and Amgen Inc (NASDAQ:AMGN) was up 2.03% or 6.70 points to 336.29 in late trade.

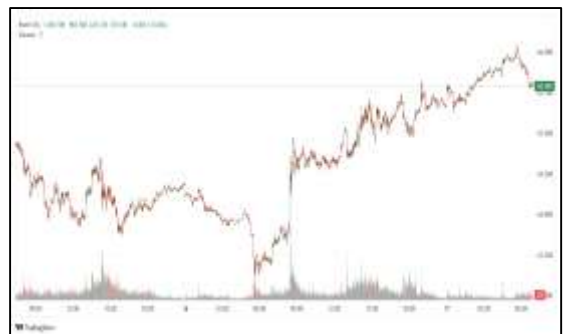


The worst performers of the session were Salesforce Inc (NYSE:CRM), which fell 3.48% or 6.17 points to trade at 171.32 at the close. International Business Machines (NYSE:IBM) declined 1.94% or 4.33 points to end at 219.22 and Caterpillar Inc (NYSE:CAT) was down 1.58% or 14.65 points to 912.14.



NASDAQ 100

At the close in NYSE, the NASDAQ Composite index declined 0.71%. The top performers on the NASDAQ Composite were Dreamland Ltd (NASDAQ:TDIC) which rose 126.92% to 2.36, Broadwind Energy Inc (NASDAQ:BWEN) which was up 117.24% to settle at 4.41 and BuzzFeed Inc (NASDAQ:BZFD) which gained 90.44% to close at 1.39.



The worst performers were Creative Global Technology Holdings Ltd (NASDAQ:CGTL) which was down 53.87% to 0.76 in late trade, eLong Power Holding Ltd (NASDAQ:ELPW) which lost 46.65% to settle at 3.03 and aTyr Pharma Inc (NASDAQ:ATYR) which was down 44.20% to 0.53 at the close.

OIL

Oil prices fell on Wednesday after rising in three consecutive sessions, as investors awaited developments around the fragile ceasefire in the Iran war and U.S. President Donald Trump headed to China for a high stakes summit with President Xi Jinping.



Brent crude futures lost 82 cents, or 0.76%, to trade at \$106.95 a barrel at 0051 GMT, and U.S. West Texas Intermediate futures fell 66 cents, or 0.65%, to \$101.52.

Precious and Base Metals

Gold prices edged lower on Wednesday as uncertainty in the Middle East and stronger-than-expected U.S. inflation data dimmed hopes for Federal Reserve rate cuts.

Spot gold fell 0.4% to \$4,695.99 per ounce, as of 0231 GMT. U.S. gold futures for June delivery gained 0.4% to \$4,705.30.

Spot silver rose 0.2% to \$86.71 per ounce, after hitting its highest level since March 11 earlier in the session.

Platinum slid 0.8% to \$2,109.53, and palladium was down 0.2% at \$1,487.47.



Traditional Agricultures

Soybeans were in rally mode on Tuesday, with contracts up 10 1/4 to 13 3/4 cents at the close. The cmdtyView national average Cash Bean price was up 14 1/2 cents at \$11.61 3/4.

Corn futures held on Tuesday, with contracts up 4 to 5 cents at the close. A limit rally in the wheat market was supportive. The CmdtyView national average Cash Corn price was up 5 cents to \$4.39.

The wheat complex was in rally mode on Tuesday, hitting the limit in a few contracts. Chicago SRW was up as little as 13 1/2 cents in the deferreds to the 45 cent limit in July. KC HRW futures rallied from 27 1/4 cents higher to the limit in the front months on Tuesday. MPLS spring wheat joined in on the rally, with contracts up 17 1/2 to 37 1/2 cents. The CBT and KC markets will have expanded limits of 70 cents on Wednesday.



Future Settlement Price Wednesday, May 13th, 2026

| Instrument | Last | Net Change | High | Low | Volume |
|-------------|-----------|------------|-----------|-----------|-----------|
| S & P 500 | 7,434.25 | 7.75 | 7,436.50 | 7,410.00 | 48,333.00 |
| NASDAQ 100 | 29,247.50 | 77.50 | 29,264.75 | 29,055.50 | 44,471.00 |
| Dow Jones | 49,868.00 | -1.00 | 49,888.00 | 49,813.00 | 4,158.00 |
| Gold | 4,703.60 | 16.90 | 4,734.80 | 4,696.00 | 19,234.00 |
| Silver | 87.30 | 1.71 | 88.58 | 86.66 | 9,338.00 |
| Copper | 6.53 | 0.07 | 6.66 | 6.44 | 63,317.00 |
| Crude Oil | 101.10 | -1.08 | 102.27 | 100.77 | 10,133.00 |
| Platinum | 2,119.10 | -7.20 | 2,167.80 | 2,075.70 | 15,342.00 |
| Palladium | 1,490.30 | -28.20 | 1,540.50 | 1,464.00 | 5,758.00 |
| Natural Gas | 2.82 | -0.02 | 2.83 | 2.82 | 1,657.00 |
| Wheat | 671-6 | -9.00 | 682-2 | 671-6 | 8,975.00 |
| Soy Beans | 1226-2 | -4.00 | 1229-2 | 1224-4 | 6,095.00 |
| Corn | 479-4 | -4.00 | 481-6 | 478-0 | 9,063.00 |

Daily Swings (The Pivot Levels)

| Instrument | Trading Range | | | | | | |
|-------------|---------------|-----------|-----------|-----------|-----------|-----------|-----------|
| | S3 | S2 | S1 | Pivot | R1 | R2 | R3 |
| Dow Jones | 49,234.30 | 49,355.04 | 49,529.76 | 49,650.50 | 49,825.22 | 49,945.96 | 50,120.68 |
| S & P 500 | 7,343.60 | 7,363.90 | 7,388.37 | 7,408.67 | 7,433.14 | 7,453.44 | 7,477.91 |
| NASDAQ 100 | 28,955.85 | 29,049.53 | 29,185.09 | 28,278.76 | 29,414.32 | 29,507.99 | 29,643.56 |
| Gold | 4,515.83 | 4,580.92 | 4,653.07 | 4,718.16 | 4,790.31 | 4,855.40 | 4,927.55 |
| Silver | 80.66 | 82.17 | 85.03 | 86.53 | 89.39 | 90.89 | 93.75 |
| Copper | 6.27 | 6.36 | 6.49 | 6.58 | 6.71 | 6.79 | 6.93 |
| Crude Oil | 94.61 | 96.36 | 99.22 | 100.97 | 103.83 | 105.58 | 108.44 |
| Platinum | 1,999.41 | 2,037.43 | 2,088.46 | 2,126.4 | 2,177.51 | 2,215.53 | 2,266.56 |
| Palladium | 1,398.34 | 1,430.67 | 1,471.09 | 1,503.4 | 1,543.84 | 1,576.17 | 1,616.59 |
| Natural Gas | 2.63 | 2.72 | 2.77 | 2.86 | 2.91 | 3.00 | 3.06 |
| Wheat | 607.95 | 622.41 | 651.08 | 665.54 | 694.20 | 708.66 | 737.33 |
| Cotton | 82.87 | 84.45 | 85.39 | 86.97 | 87.91 | 89.49 | 90.43 |
| Corn | 465.78 | 469.58 | 474.03 | 477.83 | 482.28 | 486.08 | 490.53 |

Source: - News & Quotes (Reuters, Investing, Bloomberg, FXStreet, Barchart)

Disclaimer: This document has been prepared by IGI Finex Securities Limited and is for information purposes only. Whilst every effort has been made to ensure that all the information (including any recommendations or opinions expressed) contained in this document (the information) is not misleading or unreliable, IGI Finex Securities Limited makes no representation as to the accuracy or completeness of the information. Neither IGI Finex Securities Limited nor any director, officer or employee of IGI Finex Securities Limited shall in any manner be liable or responsible for any loss that may be occasioned as consequence of a party relying on the information. This document takes no account of the investment objectives, financial situation and particular needs of investors, who shall seek further professional advice before making any investment decision. This document and the information may not be reproduced, distributed or published by any recipient for any purpose.

Contact Details

Commodity Team

| | | | |
|-----------------------|---------------------------------|---------------------------|---------------------------|
| Zaeem Haider Khan | Head of Commodities | Tel: (+92-21) 35301405 | zaeem.haider@igi.com.pk |
| Shakeel Ahmad | Branch Manager – Faisalabad | Tel: (+92-41) 2540843-45 | shakeel.ahmad1@igi.com.pk |
| Ehsan Ul Haq | Trader – Lahore | Tel: (+92-42) 3830559-68 | ehsan.haq@igi.com.pk |
| Dil Muhammad | Trader – Lahore | Tel: (+92-41) 2540843-45 | dil.muhammad@igi.com.pk |
| Inamullah Shakir | Trader – Islamabad | Tel: (+92-21) 32429613-14 | inam.ullah@igi.com.pk |
| Sheikh Muhammad Imran | Trader – Karachi | Tel: (+92-21) 35301684 | imran.ahmed@igi.com.pk |
| Asif Saleem | Branch Manager – Rahim Yar Khan | Tel: (+92-68) 5871652-6 | asif.saleem@igi.com.pk |
| Mahtab Ali | Branch Manager – Multan | Tel: (+92-61) 4512003 | mahtab.ali@igi.com.pk |

Research Team

| | | | |
|----------------------------|------------------|---------------------------------------|----------------------------|
| Abdullah Farhan | Head of Research | Tel: (+92-21) 111-234-234 Ext: 912 | abdullah.farhan@igi.com.pk |
| Sakina Makati | Research Analyst | Tel: (+92-21) 111-234-234 Ext: 810 | sakina.makati@igi.com.pk |
| Syed Muzammil Hassan Rizvi | Research Analyst | Tel: (+92-21) 111-234-234 Ext: 569 | muzammil.rizvi@igi.com.pk |
| Sufyan Siddiqui | Database Officer | Tel: (+92-21) 111-234-234 Ext: 888 | sufyan.siddiqui@igi.com.pk |

IGI Finex Securities Limited

Trading Rights Entitlement Certificate (TREC) Holder of Pakistan Stock Exchange Limited |
Corporate member of Pakistan Mercantile Exchange Limited
Website: www.igisecurities.com.pk

Head Office

Suite No 701-713, 7th Floor, The Forum, G-20,
Khayaban-e-Jami Block-09, Clifton, Karachi-75600
UAN: (+92-21) 111-444-001 | (+92-21) 111-234-234
Fax: (+92-21) 35309169, 35301780

Lahore Office

Shop # G-009, Ground Floor,
Packages Mall
Tel: (+92-42) 38303560-69
Fax: (+92-42) 38303559

Islamabad Office

3rd Floor, Kamran Centre,
Block- B, Jinnah Avenue, Blue Area
Tel: (+92-51) 2604861-2, 2604864,
2273439
Fax: (+92-51) 2273861

Faisalabad Office

Office No. 2, 5 & 8, Ground Floor, The
Regency International 949, The Mall
Faisalabad
Tel: (+92-41) 2540843-45

Rahim Yar Khan Office

Plot # 12, Basement of Khalid Market,
Model Town, Town Hall Road
Tel: (+92-68) 5871652-3
Fax: (+92-68) 5871651

Multan Office

Mezzanine Floor, Abdali Tower,
Abdali Road
Tel: (92-61) 4512003, 4571183