

Commodities and Indices Market View

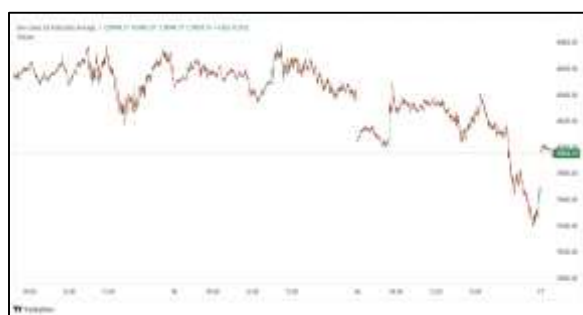
Wednesday, January 14, 2026



Technicals



S&P 500	RSI (20:80)	Sto Fast
	60.67	88.25% 91.31%



Dow Jones	RSI (20:80)	Sto Fast
	59.02	86.55% 88.96%

US Stock Market

DJIA	S&P 500	NASDAQ
49,191.99	6,963.74	23,709.87
-0.80%	-0.19%	-0.10%

U.S. stocks ended lower on Tuesday, led by a drop in financial shares as comments from JPMorgan executives added to worries about U.S. President Donald Trump's recent proposal for a cap on credit-card rates.

The Dow Jones Industrial Average (.DJI), fell 398.21 points, or 0.80%, to 49,191.99, the S&P 500 (.SPX), lost 13.53 points, or 0.19%, to 6,963.74 and the Nasdaq Composite (.IXIC), lost 24.03 points, or 0.10%, to 23,709.87.

Other big banks, due to report their quarterly numbers later this week, were also lower even as analysts expected most banks to post stronger results for the last quarter of 2025.

Advancing issues outnumbered decliners by a 1.15-to-1 ratio on the NYSE. There were 577 new highs and 77 new lows on the NYSE.

On the Nasdaq, 2,068 stocks rose and 2,701 fell as declining issues outnumbered advancers by a 1.31-to-1 ratio.

Volume on U.S. exchanges was 18.68 billion shares, compared with the roughly 16.4 billion average for the full session over the last 20 trading days.

Major Economic Releases for Today

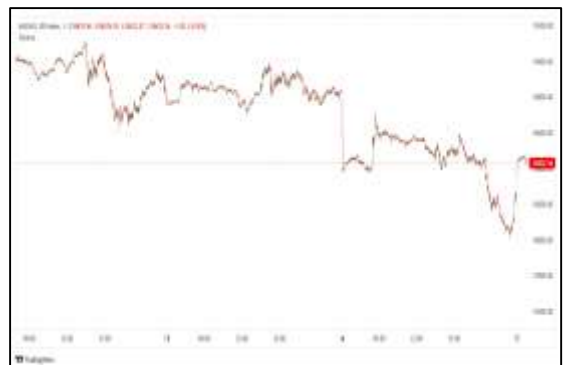
Period	Event	GMT	Forecast	Previous
JAN	Producer Price Index ex Food & Energy (MoM)	6:30	0.30%	0.10%
JAN	Producer Price Index ex Food & Energy (YoY)	6:30	--	2.60%
JAN	Consumer Price Index ex Food & Energy (MoM)	6:30	0.30%	0.20%
JAN	Consumer Price Index ex Food & Energy (YoY)	6:30	2.70%	2.60%
JAN	Retail Sales (MoM)	6:30	0.40%	0.00%

Dow Jones Industrial Average

At the close in NYSE, the Dow Jones Industrial Average lost 0.80%. The best performers of the session on the Dow Jones Industrial Average were Walmart Inc (NASDAQ:WMT), which rose 2.03% or 2.39 points to trade at 120.36 at the close. Meanwhile, Cisco Systems Inc (NASDAQ:CSCO) added 1.97% or 1.46 points to end at 75.47 and Boeing Co (NYSE:BA) was up 1.91% or 4.59 points to 244.40 in late trade.



The worst performers of the session were Salesforce Inc (NYSE:CRM), which fell 7.08% or 18.36 points to trade at 241.04 at the close. Visa Inc Class A (NYSE:V) declined 4.41% or 15.15 points to end at 328.05 and JPMorgan Chase & Co (NYSE:JPM) was down 4.23% or 13.72 points to 310.77.



NASDAQ 100

At the close in NYSE, the NASDAQ Composite index fell 0.10%. The top performers on the NASDAQ Composite were Beyond Air Inc (NASDAQ:XAIR) which rose 147.72% to 2.17, TryHard Holdings Ltd (NASDAQ:THH) which was up 138.31% to settle at 55.05 and Ambitions Enterprise Management Co LLC (NASDAQ:AHMA) which gained 133.14% to close at 12.31.



The worst performers were Co-Diagnostics Inc (NASDAQ:CODX) which was down 60.54% to 2.36 in late trade, Mingteng International Corp Inc (NASDAQ:MTEN) which lost 56.01% to settle at 0.03 and Evolution Metals & Technologies (NASDAQ:EMAT) which was down 42.19% to 9.51 at the close.

OIL

Oil prices paused their run of gains on Wednesday, slipping after four days of increases, as Venezuela resumed exports, but fears of Iranian supply disruptions following deadly civil unrest in the major Middle Eastern producer loom over the market.



Brent futures were trading 9 cents down, or 0.14% lower, at \$65.38 a barrel at 0207 GMT. U.S. West Texas Intermediate crude was down 12 cents, or 0.20%, at \$61.03 a barrel.

Precious and Base Metals

Gold climbed on Wednesday to near a record peak set in the previous session, while silver surpassed the never-before-seen \$90 mark, as softer-than-expected U.S.

Spot gold rose 0.9% to \$4,627.95 per ounce as of 0406 GMT, having hit a record high of \$4,634.33 on Tuesday. U.S. gold futures for February delivery rose 0.8% to \$4,635.60.



Spot silver jumped 4.6% to \$90.95 per ounce after breaching \$90 for the first time, having shot up nearly 28% already this year.

Elsewhere, spot platinum climbed 4.7% to \$2,432.80 per ounce, a one-week high. It hit a record \$2,478.50/oz on December 29.



Palladium was up 3.7% at \$1,910.08 per ounce.

Traditional Agricultures

Soybeans closed out Tuesday with losses of 9 to 10 ¼ cent in the front months to follow up the Monday pullback. The cmdtyView national average Cash Bean price was 10 1/4 cents lower at \$9.66 1/4.



Corn futures closed the Tuesday session with contracts down 1 to 3 ½ cents across the front months, following sharp Monday losses. The CmdtyView national average Cash Corn price was down 1 3/4 cents at \$3.81 1/2.



The wheat complex closed the Tuesday trade mixed, as spring wheat was stronger and KC leading the charge to the downside. Chicago SRW futures posted fractional to penny losses in the front months to close out the day. KC HRW futures closed the Tuesday session with contracts 6 to 7 ¼ cents in the red.

Future Settlement Price Wednesday, January 14th , 2026					
Instrument	Last	Net Change	High	Low	Volume
S & P 500	6,994.75	-7.00	7,002.50	6,991.00	28,080.00
NASDAQ 100	25,901.00	-5.00	25,925.75	25,876.00	15,642.00
Dow Jones	49,299.00	-110.00	49,387.00	49,292.00	4,475.00
Gold	4,634.00	34.90	4,638.90	4,594.30	31,720.00
Silver	90.95	4.61	91.37	86.75	32,115.00
Copper	6.02	-0.02	6.09	5.95	50,771.00
Crude Oil	60.72	-0.21	60.95	60.57	9,156.00
Platinum	2,353.30	-27.30	2,422.50	2,278.00	28,583.00
Palladium	1,914.90	-24.40	1,952.50	1,831.00	7,152.00
Natural Gas	2.86	-0.02	2.87	2.84	1,417.00
Wheat	511-2	-1.00	513-0	510-2	2,485.00
Soy Beans	1049-0	-2.00	1052-2	1047-0	14,109.00
Corn	421-0	-4.00	422-4	420-2	26,281.00

Daily Swings (The Pivot Levels)							
		Trading Range					
Instrument	S3	S2	S1	Pivot	R1	R2	R3
Dow Jones	48,567.85	48,789.58	49,189.89	49411.62	49,811.93	50,033.66	50,433.97
S & P 500	6,893.19	6,913.63	6,945.45	6965.89	6,997.71	7,018.15	7,049.97
NASDAQ 100	25,394.91	25,498.74	25,643.20	25747.03	25,891.50	25,995.32	26,139.79
Gold	4,508.43	4,543.26	4,573.68	4608.51	4,638.93	4,673.76	4,704.18
Silver	78.77	81.15	84.42	86.80	90.08	92.46	95.73
Copper	5.80	5.87	5.94	6.02	6.09	6.16	6.23
Crude Oil	57.91	58.69	59.93	60.71	61.95	62.73	63.97
Platinum	2,144.56	2,212.68	2,284.31	2352.4	2,424.06	2,492.18	2,563.81
Palladium	1,717.91	1,774.33	1,839.66	1896.0	1,961.41	2,017.83	2,083.16
Natural Gas	3.09	3.19	3.29	3.39	3.49	3.59	3.69
Wheat	500.72	503.92	507.22	510.42	513.72	516.92	520.22
Cotton	64.33	64.59	64.73	64.99	65.13	65.39	65.53
Corn	411.97	414.67	417.22	419.92	422.47	425.17	427.72

Source: - News & Quotes (Reuters, Investing, Bloomberg, FXStreet, Barchart)

Disclaimer: This document has been prepared by IGI Finex Securities Limited and is for information purposes only. Whilst every effort has been made to ensure that all the information (including any recommendations or opinions expressed) contained in this document (the information) is not misleading or unreliable, IGI Finex Securities Limited makes no representation as to the accuracy or completeness of the information. Neither IGI Finex Securities Limited nor any director, officer or employee of IGI Finex Securities Limited shall in any manner be liable or responsible for any loss that may be occasioned as consequence of a party relying on the information. This document takes no account of the investment objectives, financial situation and particular needs of investors, who shall seek further professional advice before making any investment decision. This document and the information may not be reproduced, distributed or published by any recipient for any purpose.

Contact Details

Commodity Team

Zaeem Haider Khan	Head of Commodities	Tel: (+92-21) 35301405	zaeem.haider@igi.com.pk
Shakeel Ahmad	Branch Manager – Faisalabad	Tel: (+92-41) 2540843-45	shakeel.ahmad1@igi.com.pk
Ehsan Ul Haq	Trader – Lahore	Tel: (+92-42) 3830559-68	ehsan.haq@igi.com.pk
Dil Muhammad	Trader – Lahore	Tel: (+92-41) 2540843-45	dil.muhammad@igi.com.pk
Inamullah Shakir	Trader – Islamabad	Tel: (+92-21) 32429613-14	inam.ullah@igi.com.pk
Sheikh Muhammad Imran	Trader – Karachi	Tel: (+92-21) 35301684	imran.ahmed@igi.com.pk
Asif Saleem	Branch Manager – Rahim Yar Khan	Tel: (+92-68) 5871652-6	asif.saleem@igi.com.pk
Mahtab Ali	Branch Manager – Multan	Tel: (+92-61) 4512003	mahtab.ali@igi.com.pk

Research Team

Abdullah Farhan	Head of Research	Tel: (+92-21) 111-234-234 Ext: 912	abdullah.farhan@igi.com.pk
Sakina Makati	Research Analyst	Tel: (+92-21) 111-234-234 Ext: 810	sakina.makati@igi.com.pk
Syed Muzammil Hassan Rizvi	Research Analyst	Tel: (+92-21) 111-234-234 Ext: 569	muzammil.rizvi@igi.com.pk
Sufyan Siddiqui	Database Officer	Tel: (+92-21) 111-234-234 Ext: 888	sufyan.siddiqui@igi.com.pk

IGI Finex Securities Limited

Trading Rights Entitlement Certificate (TREC) Holder of Pakistan Stock Exchange Limited |

Corporate member of Pakistan Mercantile Exchange Limited

Website: www.igisecurities.com.pk

Head Office

Suite No 701-713, 7th Floor, The Forum, G-20,
Khayaban-e-Jami Block-09, Clifton, Karachi-75600

UAN: (+92-21) 111-444-001 | (+92-21) 111-234-234

Fax: (+92-21) 35309169, 35301780

Lahore Office

Shop # G-009, Ground Floor,
Packages Mall

Tel: (+92-42) 38303560-69

Fax: (+92-42) 38303559

Islamabad Office

3rd Floor, Kamran Centre,
Block- B, Jinnah Avenue, Blue Area
Tel: (+92-51) 2604861-2, 2604864,
2273439

Fax: (+92-51) 2273861

Faisalabad Office

Office No. 2, 5 & 8, Ground Floor, The
Regency International 949, The Mall
Faisalabad

Tel: (+92-41) 2540843-45

Rahim Yar Khan Office

Plot # 12, Basement of Khalid Market,
Model Town, Town Hall Road

Tel: (+92-68) 5871652-3

Fax: (+92-68) 5871651

Multan Office

Mezzanine Floor, Abdali Tower,
Abdali Road

Tel: (92-61) 4512003, 4571183

IGI Finex Securities Limited

© Copyright 2024 IGI Finex Securities Limited