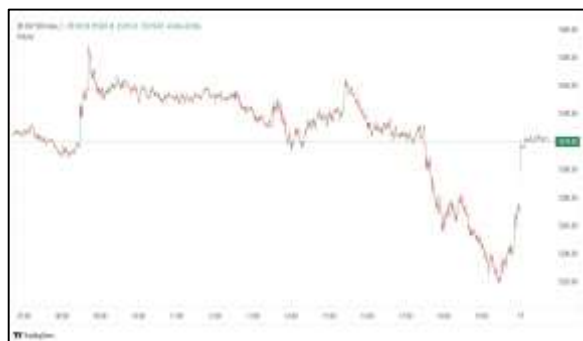


Commodities and Indices Market View

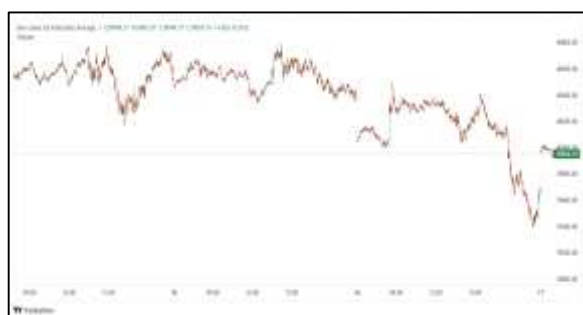
Thursday, January 15, 2026



Technicals



S&P 500	RSI (20:80)	Sto Fast
	55.35	87.12% 81.20%



Dow Jones	RSI (20:80)	Sto Fast
	58.35	87.19% 81.87%

US Stock Market

DJIA	S&P 500	NASDAQ
49,149.63	6,926.60	23,471.35
-0.09%	-0.53%	-1.00%

U.S. stocks finished lower on Wednesday, led by a drop in the Nasdaq, with technology shares declining as investors moved into more defensive areas, while bank stocks extended recent losses following some mixed quarterly results.

S&P 500 financials (.SPSY), fell along with the S&P 500 technology sector (.SPLRCT), while more defensive groups including consumer staples (.SPLRCS), rose.

The Dow Jones Industrial Average (.DJI), fell 42.36 points, or 0.09%, to 49,149.63, the S&P 500 (.SPX), lost 37.14 points, or 0.53%, to 6,926.60 and the Nasdaq Composite (.IXIC), lost 238.12 points, or 1.00%, to 23,471.75.

Advancing issues outnumbered decliners by a 1.85-to-1 ratio on the NYSE. There were 518 new highs and 69 new lows on the NYSE.

On the Nasdaq, 2,739 stocks rose and 2,034 fell as advancing issues outnumbered decliners by a 1.35-to-1 ratio.

Volume on U.S. exchanges was 22.54 billion shares, compared with the 16.69 billion average for the full session over the last 20 trading days.

Major Economic Releases for Today

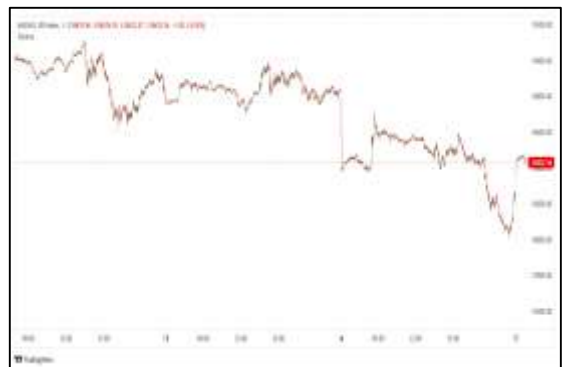
Period	Event	GMT	Forecast	Previous
JAN	Consumer Price Index (MoM)	6:30	0.30%	0.30%
JAN	Consumer Price Index (YoY)	6:30	2.70%	2.70%
JAN	Consumer Price Index ex Food & Energy (MoM)	6:30	0.30%	0.20%
JAN	Consumer Price Index ex Food & Energy (YoY)	6:30	2.70%	2.60%
JAN	Imports (YoY)	8:00	0.80%	1.90%

Dow Jones Industrial Average

At the close in NYSE, the Dow Jones Industrial Average lost 0.09%. The best performers of the session on the Dow Jones Industrial Average were Merck & Company Inc (NYSE:MRK), which rose 2.57% or 2.78 points to trade at 111.04 at the close. Meanwhile, Johnson & Johnson (NYSE:JNJ) added 2.31% or 4.94 points to end at 218.59 and Chevron Corp (NYSE:CVX) was up 2.12% or 3.47 points to 167.34 in late trade.



The worst performers of the session were Amazon.com Inc (NASDAQ:AMZN), which fell 2.43% or 5.89 points to trade at 236.65 at the close. Microsoft Corporation (NASDAQ:MSFT) declined 2.31% or 10.87 points to end at 459.80 and Cisco Systems Inc (NASDAQ:CSCO) was down 1.42% or 1.07 points to 74.40.



NASDAQ 100

At the close in NYSE, the NASDAQ Composite index declined 1.00%. The top performers on the NASDAQ Composite were Inspire Veterinary Partners Inc (NASDAQ:IVP) which rose 256.52% to 0.08, Lottery.com Inc (NASDAQ:SEGG) which was up 79.91% to settle at 0.93 and Rich Sparkle Holdings Ltd (NASDAQ:ANPA) which gained 70.50% to close at 143.24.



The worst performers were Briacell Therapeutics Corp (NASDAQ:BCTX) which was down 55.49% to 4.86 in late trade, TryHard Holdings Ltd (NASDAQ:THH) which lost 41.87% to settle at 32.00 and Plus Therapeutics Inc (NASDAQ:PSTV) which was down 37.97% to 0.29 at the close.

OIL

Oil prices slid more than 2% in early Asian trade on Thursday after U.S. President Donald Trump said killings in Iran's crackdown on nationwide protests were stopping, tempering concern over military action against Iran and supply disruption.



Brent futures were down \$1.67, or 2.5%, at \$64.85 a barrel at 0109 GMT, while U.S. West Texas Intermediate crude slipped \$1.54, or 2.5%, to \$60.48 a barrel. Both benchmarks settled more than 1% higher on Wednesday.

Precious and Base Metals

Gold slipped on Thursday as investors booked profits after three consecutive sessions of record highs, while an apparent softer tone from U.S. President Donald Trump on the Federal Reserve chair and Iran dampened safe-haven demand for bullion.

Spot gold was down 0.8% at \$4,584.03 per ounce, as of 0322 GMT. In the previous session, bullion hit a record high of \$4,642.72. U.S. gold futures for February delivery fell 1% to \$4,587.70.

Spot silver slid 5.6% to \$87.46 per ounce after hitting an all-time high of \$93.57 earlier in the session.

Spot platinum receded 4.3% to \$2,282.90 per ounce, a one-week high, after scaling a record peak of \$2,478.50 on December 29. Palladium lost 3.3% to \$1,766.25 per ounce and hovered near a one-week low.



Traditional Agricultures

Soybeans settled Wednesday trade with contracts 3 to 7 ¼ cents higher in the front months, as some deferred were steady to slightly lower. January expired today. The cmdtyView national average Cash Bean price was 4 cents higher at \$9.70 1/2.



Corn futures saw a slight recovery on Wednesday, with contracts up 1 to 2 ¼ cents at the close. The CmdtyView national average Cash Corn price was up 2 1/2 cents at \$3.85.



The wheat complex closed Wednesday with a slight bounce across the three exchanges. Chicago SRW futures posted 2 cent gains across the front months. KC HRW futures saw 2 to 3 cent higher trade on Wednesday. MPLS spring wheat showed fractional gains at the Wednesday close.

Future Settlement Price Thursday, January 15th, 2026					
Instrument	Last	Net Change	High	Low	Volume
S & P 500	6,959.00	-7.25	6,965.25	6,949.50	39,606.00
NASDAQ 100	25,590.50	-40.50	25,643.00	25,562.50	26,594.00
Dow Jones	49,307.00	-49.00	49,342.00	49,253.00	6,534.00
Gold	4,598.40	-37.30	4,637.20	4,584.50	56,384.00
Silver	87.73	-3.66	93.70	86.13	61,221.00
Copper	6.06	0.04	6.15	6.00	59,111.00
Crude Oil	59.88	-2.00	61.01	59.77	28,088.00
Platinum	2,385.80	32.50	2,463.50	2,342.00	30,148.00
Palladium	1,902.20	-12.70	1,970.00	1,872.00	6,879.00
Natural Gas	2.71	-0.01	2.72	2.69	1,719.00
Wheat	512-6	-2.00	514-0	512-4	2,408.00
Soy Beans	1042-2	-2.00	1044-6	1041-6	6,139.00
Corn	423-4	-3.00	424-0	422-2	11,098.00

Daily Swings (The Pivot Levels)							
			Trading Range				
Instrument	S3	S2	S1	Pivot	R1	R2	R3
Dow Jones	48,399.25	48,727.78	48,959.89	49,288.42	49,520.53	49,849.06	50,081.17
S & P 500	6,892.67	6,915.72	6,939.73	6,962.78	6,986.79	7,009.84	7,033.85
NASDAQ 100	25,400.57	25,521.34	25,631.64	25,752.41	25,862.71	25,983.48	26,093.79
Gold	4,553.00	4,578.63	4,599.14	4,624.77	4,645.28	4,670.91	4,691.42
Silver	82.40	84.99	88.52	91.11	94.65	97.23	100.77
Copper	5.85	5.93	5.99	6.07	6.14	6.22	6.28
Crude Oil	56.04	57.63	59.18	60.77	62.32	63.91	65.46
Platinum	2,202.40	2,276.80	2,314.00	2,388.4	2,425.60	2,500.00	2,537.20
Palladium	1,611.09	1,711.42	1,769.34	1,869.6	1,927.59	2,027.92	2,085.84
Natural Gas	2.60	2.83	2.97	3.21	3.35	3.58	3.72
Wheat	503.09	505.73	509.12	511.76	515.14	517.79	521.17
Cotton	64.35	64.56	64.78	64.99	65.21	65.42	65.64
Corn	413.76	416.57	419.28	422.09	424.80	427.61	430.33

Source: - News & Quotes (Reuters, Investing, Bloomberg, FXStreet, Barchart)

Disclaimer: This document has been prepared by IGI Finex Securities Limited and is for information purposes only. Whilst every effort has been made to ensure that all the information (including any recommendations or opinions expressed) contained in this document (the information) is not misleading or unreliable, IGI Finex Securities Limited makes no representation as to the accuracy or completeness of the information. Neither IGI Finex Securities Limited nor any director, officer or employee of IGI Finex Securities Limited shall in any manner be liable or responsible for any loss that may be occasioned as consequence of a party relying on the information. This document takes no account of the investment objectives, financial situation and particular needs of investors, who shall seek further professional advice before making any investment decision. This document and the information may not be reproduced, distributed or published by any recipient for any purpose.

Contact Details

Commodity Team

Zaeem Haider Khan	Head of Commodities	Tel: (+92-21) 35301405	zaeem.haider@igi.com.pk
Shakeel Ahmad	Branch Manager – Faisalabad	Tel: (+92-41) 2540843-45	shakeel.ahmad1@igi.com.pk
Ehsan Ul Haq	Trader – Lahore	Tel: (+92-42) 3830559-68	ehsan.haq@igi.com.pk
Dil Muhammad	Trader – Lahore	Tel: (+92-41) 2540843-45	dil.muhammad@igi.com.pk
Inamullah Shakir	Trader – Islamabad	Tel: (+92-21) 32429613-14	inam.ullah@igi.com.pk
Sheikh Muhammad Imran	Trader – Karachi	Tel: (+92-21) 35301684	imran.ahmed@igi.com.pk
Asif Saleem	Branch Manager – Rahim Yar Khan	Tel: (+92-68) 5871652-6	asif.saleem@igi.com.pk
Mahtab Ali	Branch Manager – Multan	Tel: (+92-61) 4512003	mahtab.ali@igi.com.pk

Research Team

Abdullah Farhan	Head of Research	Tel: (+92-21) 111-234-234 Ext: 912	abdullah.farhan@igi.com.pk
Sakina Makati	Research Analyst	Tel: (+92-21) 111-234-234 Ext: 810	sakina.makati@igi.com.pk
Syed Muzammil Hassan Rizvi	Research Analyst	Tel: (+92-21) 111-234-234 Ext: 569	muzammil.rizvi@igi.com.pk
Sufyan Siddiqui	Database Officer	Tel: (+92-21) 111-234-234 Ext: 888	sufyan.siddiqui@igi.com.pk

IGI Finex Securities Limited

Trading Rights Entitlement Certificate (TREC) Holder of Pakistan Stock Exchange Limited |
Corporate member of Pakistan Mercantile Exchange Limited
Website: www.igisecurities.com.pk

Head Office

Suite No 701-713, 7th Floor, The Forum, G-20,
Khayaban-e-Jami Block-09, Clifton, Karachi-75600
UAN: (+92-21) 111-444-001 | (+92-21) 111-234-234
Fax: (+92-21) 35309169, 35301780

Lahore Office

Shop # G-009, Ground Floor,
Packages Mall
Tel: (+92-42) 38303560-69
Fax: (+92-42) 38303559

Islamabad Office

3rd Floor, Kamran Centre,
Block- B, Jinnah Avenue, Blue Area
Tel: (+92-51) 2604861-2, 2604864,
2273439
Fax: (+92-51) 2273861

Faisalabad Office

Office No. 2, 5 & 8, Ground Floor, The
Regency International 949, The Mall
Faisalabad
Tel: (+92-41) 2540843-45

Rahim Yar Khan Office

Plot # 12, Basement of Khalid Market,
Model Town, Town Hall Road
Tel: (+92-68) 5871652-3
Fax: (+92-68) 5871651

Multan Office

Mezzanine Floor, Abdali Tower,
Abdali Road
Tel: (92-61) 4512003, 4571183