

Commodities and Indices Market View

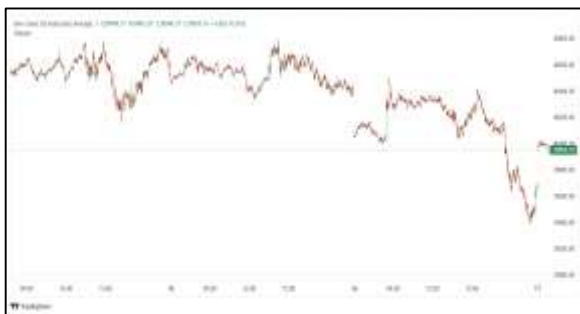
Friday, May 15, 2026



Technicals



S&P 500	RSI (20:80)	Sto Fast
	78.06	95.11% 94.77%



Dow Jones	RSI (20:80)	Sto Fast
	63.90	72.66% 77.95%

US Stock Market

DJIA	S&P 500	NASDAQ
50,063.46	7,501.24	26,635.22
+0.75%	+0.77%	+0.88%

U.S. stocks advanced on Thursday, lifted by a rally in tech stocks. All three major U.S. stock indexes gained ground, with the S&P 500 and the Nasdaq setting their latest in a series of record closing highs.

The blue-chip Dow closed just 0.3% shy of its all-time closing high reached on February 10.

The Dow Jones Industrial Average (.DJI), rose 370.26 points, or 0.75%, to 50,063.46, the S&P 500 (.SPX), ab gained 56.99 points, or 0.77%, to 7,501.24 and the Nasdaq Composite (.IXIC), gained 232.88 points, or 0.88%, to 26,635.22.

Advancing issues outnumbered decliners by a 1.6-to-1 ratio on the NYSE. There were 500 new highs and 95 new lows on the NYSE. On the Nasdaq, 2,755 stocks rose and 1,980 fell as advancing issues outnumbered decliners by a 1.39-to-1 ratio.

The S&P 500 posted 30 new 52-week highs and 11 new lows while the Nasdaq Composite recorded 113 new highs and 130 new lows.

Volume on U.S. exchanges was 18.77 billion shares, compared with the 18.17 billion average for the full session over the last 20 trading days.

Major Economic Releases for Today

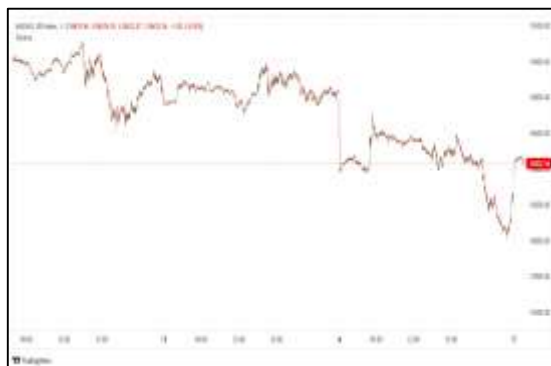
Period	Event	GMT	Forecast	Previous
MAY	Gross Domestic Product (QoQ) (Q1)	11:00	0.60%	0.10%
MAY	Gross Domestic Product (YoY) (Q1)	11:00	0.80%	1.00%
MAY	Retail Sales (MoM)	5:30	0.50%	1.70%
MAY	Retail Sales Control Group	5:30	--	0.70%
MAY	Industrial Production (MoM)	11:00	-0.30%	0.50%

Dow Jones Industrial Average

At the close in NYSE, the Dow Jones Industrial Average gained 0.75% to hit a new 3-months high. The best performers of the session on the Dow Jones Industrial Average were Cisco Systems Inc (NASDAQ:CSCO), which rose 13.41% or 13.66 points to trade at 115.53 at the close. Meanwhile, NVIDIA Corporation (NASDAQ:NVDA) added 4.39% or 9.92 points to end at 235.75 and Caterpillar Inc (NYSE:CAT) was up 1.99% or 17.92 points to 920.22 in late trade.



The worst performers of the session were Boeing Co (NYSE:BA), which fell 4.73% or 11.39 points to trade at 229.21 at the close. 3M Company (NYSE:MMM) declined 1.35% or 1.98 points to end at 145.12 and Amazon.com Inc (NASDAQ:AMZN) was down 1.08% or 2.91 points to 267.22.



NASDAQ 100

At the close in NYSE, the NASDAQ Composite index added 0.88%. The top performers on the NASDAQ Composite were Smart Power Corp (NASDAQ:CREG) which rose 250.00% to 0.70, Leslies Inc (NASDAQ:LESL) which was up 143.36% to settle at 3.48 and Quantum Cyber NV (NASDAQ:QUCY) which gained 123.51% to close at 2.99.



The worst performers were Dreamland Ltd (NASDAQ:TDIC) which was down 96.53% to 0.80 in late trade, STAK Inc (NASDAQ:STAK) which lost 62.71% to settle at 0.88 and Work Medical Technology Group Ltd (NASDAQ:WOK) which was down 52.90% to 1.30 at the close.

OIL

Oil prices gained more than 1% after President Donald Trump said China wants to buy oil from the United States and as concerns persisted over ship attacks and seizures despite Iran saying about 30 vessels had passed through the Strait of Hormuz.



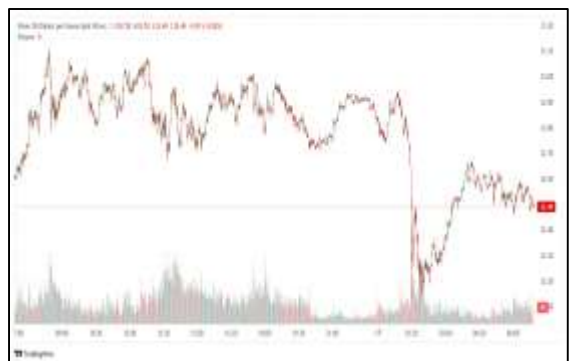
Brent crude oil futures rose \$1.17, or 1.11%, to \$106.89 a barrel by 0252 GMT, while U.S. West Texas Intermediate futures were up \$1.10, or 1.09%, to \$102.27.

Precious and Base Metals

Gold fell to a more than one-week low on Friday and was set for a weekly decline as higher energy prices fuelled inflation fears and prolonged higher interest rates, while investors focused on the meeting between U.S. President Donald Trump and Chinese President Xi Jinping.

Spot gold extended losses for the fourth straight session and was down 0.8% at \$4,613.19 per ounce by 0205 GMT, its lowest level since May 6. Bullion was down 2.1% so far this week. U.S. gold futures for June delivery lost 1.4% to \$4,619. Gold has fallen about 13% since the U.S.-Iran conflict began in late February.

Spot silver fell 3.1% to \$80.93 per ounce, platinum lost 1.7% to \$2,021.75, and palladium was down 0.9% at \$1,423.75.



Traditional Agricultures

Soybeans posted 20 to 40 ¼ cent losses across most contracts on Thursday. The cmdtyView national average Cash Bean price was down 36 cents at \$11.28.

Corn futures were down 9 to 15 cents in the front months on Thursday, falling with the rest of the grain complex as very few details were announced out of the Trump/Xi meeting. May futures expired today. The CmdtyView national average Cash Corn price was down 13 cents to \$4.27.

The wheat complex was under pressure with the rest of the grains on Thursday, as the Trump/Xi meeting yielded very few headlines for any potential ag purchases. Chicago SRW futures were down 11 ¾ to 18 cents in the front months. KC HRW futures were leading the charge, with 11 ¼ to 20 cent losses.



Future Settlement Price Friday, May 15th, 2026

Instrument	Last	Net Change	High	Low	Volume
S & P 500	7,503.75	-21.75	7,528.25	7,493.75	69,036.00
NASDAQ 100	29,558.00	-129.75	29,734.00	29,493.75	51,816.00
Dow Jones	50,035.00	-119.00	50,166.00	49,952.00	5,997.00
Gold	4,623.40	-61.90	4,670.10	4,611.00	28,374.00
Silver	81.85	-3.48	84.38	81.02	11,958.00
Copper	6.61	-0.07	6.65	6.55	43,543.00
Crude Oil	98.30	1.38	98.73	97.23	10,828.00
Platinum	2,091.40	-105.90	2,181.60	2,064.00	15,506.00
Palladium	1,460.80	-74.80	1,532.50	1,454.50	4,983.00
Natural Gas	3.11	0.02	3.14	3.10	1,509.00
Wheat	656-6	-3.00	663-4	654-6	6,572.00
Soy Beans	1195-4	3.00	1202-0	1192-6	16,918.00
Corn	471-0	-1.00	473-6	468-2	27,232.00

Daily Swings (The Pivot Levels)

Instrument	Trading Range						
	S3	S2	S1	Pivot	R1	R2	R3
Dow Jones	49,216.98	49,333.99	49,513.59	49,630.60	49,810.20	49,927.21	50,106.81
S & P 500	7,307.99	7,341.56	7,392.90	7,426.47	7,477.81	7,511.38	7,562.72
NASDAQ 100	28,589.20	28,778.88	29,072.90	29,262.58	29,556.61	29,746.28	30,040.31
Gold	4,552.86	4,601.18	4,628.78	4,677.10	4,704.70	4,753.02	4,780.62
Silver	76.15	79.79	81.89	85.53	87.63	91.27	93.37
Copper	6.43	6.49	6.54	6.59	6.64	6.70	6.74
Crude Oil	97.19	98.30	100.11	101.22	103.03	104.14	105.95
Platinum	1,918.20	1,991.85	2,033.95	2,107.6	2,149.70	2,223.35	2,265.45
Palladium	1,326.16	1,383.83	1,417.91	1,475.5	1,509.66	1,567.33	1,601.41
Natural Gas	2.71	2.75	2.84	2.89	2.97	3.02	3.11
Wheat	605.29	627.83	643.04	665.58	680.79	703.33	718.54
Cotton	77.58	80.22	82.08	84.72	86.58	89.22	91.08
Corn	443.26	454.32	461.28	472.34	479.30	490.36	497.33

Source: - News & Quotes (Reuters, Investing, Bloomberg, FXStreet, Barchart)

Disclaimer: This document has been prepared by IGI Finex Securities Limited and is for information purposes only. Whilst every effort has been made to ensure that all the information (including any recommendations or opinions expressed) contained in this document (the information) is not misleading or unreliable, IGI Finex Securities Limited makes no representation as to the accuracy or completeness of the information. Neither IGI Finex Securities Limited nor any director, officer or employee of IGI Finex Securities Limited shall in any manner be liable or responsible for any loss that may be occasioned as consequence of a party relying on the information. This document takes no account of the investment objectives, financial situation and particular needs of investors, who shall seek further professional advice before making any investment decision. This document and the information may not be reproduced, distributed or published by any recipient for any purpose.

Contact Details

Commodity Team

Zaeem Haider Khan	Head of Commodities	Tel: (+92-21) 35301405	zaeem.haider@igi.com.pk
Shakeel Ahmad	Branch Manager – Faisalabad	Tel: (+92-41) 2540843-45	shakeel.ahmad1@igi.com.pk
Ehsan Ul Haq	Trader – Lahore	Tel: (+92-42) 3830559-68	ehsan.haq@igi.com.pk
Dil Muhammad	Trader – Lahore	Tel: (+92-41) 2540843-45	dil.muhammad@igi.com.pk
Inamullah Shakir	Trader – Islamabad	Tel: (+92-21) 32429613-14	inam.ullah@igi.com.pk
Sheikh Muhammad Imran	Trader – Karachi	Tel: (+92-21) 35301684	imran.ahmed@igi.com.pk
Asif Saleem	Branch Manager – Rahim Yar Khan	Tel: (+92-68) 5871652-6	asif.saleem@igi.com.pk
Mahtab Ali	Branch Manager – Multan	Tel: (+92-61) 4512003	mahtab.ali@igi.com.pk

Research Team

Abdullah Farhan	Head of Research	Tel: (+92-21) 111-234-234 Ext: 912	abdullah.farhan@igi.com.pk
Sakina Makati	Research Analyst	Tel: (+92-21) 111-234-234 Ext: 810	sakina.makati@igi.com.pk
Syed Muzammil Hassan Rizvi	Research Analyst	Tel: (+92-21) 111-234-234 Ext: 569	muzammil.rizvi@igi.com.pk
Sufyan Siddiqui	Database Officer	Tel: (+92-21) 111-234-234 Ext: 888	sufyan.siddiqui@igi.com.pk

IGI Finex Securities Limited

Trading Rights Entitlement Certificate (TREC) Holder of Pakistan Stock Exchange Limited |
Corporate member of Pakistan Mercantile Exchange Limited
Website: www.igisecurities.com.pk

Head Office

Suite No 701-713, 7th Floor, The Forum, G-20,
Khayaban-e-Jami Block-09, Clifton, Karachi-75600
UAN: (+92-21) 111-444-001 | (+92-21) 111-234-234
Fax: (+92-21) 35309169, 35301780

Lahore Office

Shop # G-009, Ground Floor,
Packages Mall
Tel: (+92-42) 38303560-69
Fax: (+92-42) 38303559

Islamabad Office

3rd Floor, Kamran Centre,
Block- B, Jinnah Avenue, Blue Area
Tel: (+92-51) 2604861-2, 2604864,
2273439
Fax: (+92-51) 2273861

Faisalabad Office

Office No. 2, 5 & 8, Ground Floor, The
Regency International 949, The Mall
Faisalabad
Tel: (+92-41) 2540843-45

Rahim Yar Khan Office

Plot # 12, Basement of Khalid Market,
Model Town, Town Hall Road
Tel: (+92-68) 5871652-3
Fax: (+92-68) 5871651

Multan Office

Mezzanine Floor, Abdali Tower,
Abdali Road
Tel: (92-61) 4512003, 4571183