

Commodities and Indices Market View

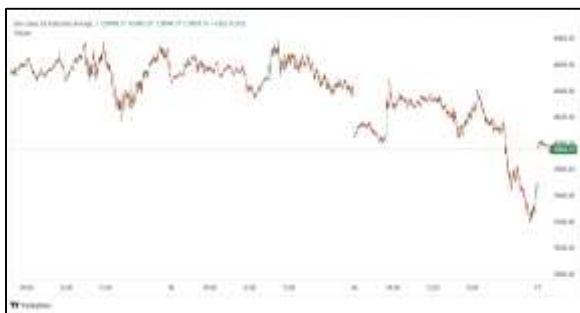
Wednesday, June 17, 2026



Technicals



S&P 500	RSI (20:80)	Sto Fast
	56.58	52.95% 68.11%



Dow Jones	RSI (20:80)	Sto Fast
	36.13	31.09% 30.57%

US Stock Market

DJIA	S&P 500	NASDAQ
51,999.67	7,511.35	26,376.34
+0.64%	-0.57%	-1.15%

The Nasdaq Composite and the S&P 500 finished lower on Tuesday under pressure from technology stocks, while the Dow Jones Industrial Average marked its second straight record close and SpaceX rallied to become the fifth-most valuable U.S. company.

The Dow Jones Industrial Average (.DJI), rose 328.64 points, or 0.64%, to 51,999.67, the S&P 500 (.SPX), lost 42.94 points, or 0.57%, to 7,511.35 and the Nasdaq Composite (.IXIC), lost 307.60 points, or 1.15%, to 26,376.34.

Advancing issues outnumbered decliners by a 1.06-to-1 ratio on the NYSE where there were 338 new highs and 84 new lows.

On the Nasdaq, 1,963 stocks rose and 2,835 fell as declining issues outnumbered advancers by a 1.44-to-1 ratio.

The S&P 500 posted 23 new 52-week highs and three new lows while the Nasdaq Composite recorded 78 new highs and 119 new lows.

On U.S. exchanges, 20.98 billion shares changed hands compared with the 20.84 billion average for the last 20 sessions.

Major Economic Releases for Today

Period	Event	GMT	Forecast	Previous
JUN	Interest Rate Projections - 1st year	11:00	--	3.10%
JUN	Interest Rate Projections - 2nd year	11:00	--	3.10%
JUN	Interest Rate Projections - Current	11:00	--	3.40%
JUN	Interest Rate Projections - Longer	11:00	--	3.10%
JUN	Retail Sales (MoM)	5:30	0.50%	0.50%

Dow Jones Industrial Average

At the close in NYSE, the Dow Jones Industrial Average gained 0.64% to hit a new all time high. The best performers of the session on the Dow Jones Industrial Average were JPMorgan Chase & Co (NYSE:JPM), which rose 3.68% or 11.74 points to trade at 331.14 at the close. Meanwhile, Visa Inc Class A (NYSE:V) added 2.89% or 9.37 points to end at 333.19 and Home Depot Inc (NYSE:HD) was up 2.20% or 7.27 points to 337.09 in late trade.

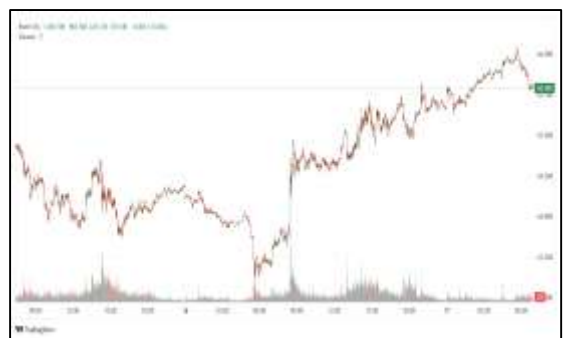


The worst performers of the session were NVIDIA Corporation (NASDAQ:NVDA), which fell 2.37% or 5.04 points to trade at 207.41 at the close. Salesforce Inc (NYSE:CRM) declined 1.72% or 2.83 points to end at 161.72 and Microsoft Corporation (NASDAQ:MSFT) was down 1.46% or 5.83 points to 393.93.



NASDAQ 100

At the close in NYSE, the NASDAQ Composite index lost 1.15%. The top performers on the NASDAQ Composite were AIFU Inc DRC (NASDAQ:AIFU) which rose 1,790.33% to 50.85, Our Bond, Inc (NASDAQ:OBAL) which was up 106.70% to settle at 1.11 and CCSC Technology International Holdings Ltd (NASDAQ:CCTG) which gained 89.89% to close at 1.48.



The worst performers were GD Culture Group Ltd (NASDAQ:GDC) which was down 72.31% to 0.03 in late trade, Tianci International Inc (NASDAQ:CIIT) which lost 70.14% to settle at 0.44 and Functional Brands Inc (OTC:MEHA) which was down 56.76% to 0.01 at the close.

OIL

Oil prices inched lower on Wednesday, extending the previous session's declines as investors assessed the U.S.-Iran peace deal, though uncertainty over the full resumption of shipping through the Strait of Hormuz limited further falls.



Brent crude futures dipped 16 cents, or 0.2%, to \$78.80 a barrel by 0340 GMT, while U.S. West Texas Intermediate fell 25 cents, or 0.3%, to \$75.80 a barrel.

Precious and Base Metals

Gold gained for a fifth consecutive session on Wednesday as optimism over a U.S.-Iran peace agreement eased expectations of U.S. interest rate hikes, while investors awaited further details on the deal and the Federal Reserve's policy meeting.

Spot gold was up 0.3% at \$4,341.12 per ounce, as of 0230 GMT, trading near a one-week high hit on Monday. U.S. gold futures for August delivery rose 0.2% to \$4,361.10.

Gold loses appeal in a high-interest-rate environment as it is a non-yielding asset.

Other precious metals also extended gains, with spot silver rising 0.3% to \$70.38 per ounce, platinum rose 0.5% to \$1,812.80, and palladium was up 0.3% at \$1,355.65.



Traditional Agricultures

Soybeans held off the early weakness on Tuesday, as day session buying took price action 7 ½ to 11 ¼ cents higher into the close. Rumors of Chinese inquiries into the US sparked some buying interest early. The cmdtyView national average Cash Bean price was up 10 3/4 cents at \$10.77 3/4.

Corn futures rounded out the Tuesday session on a mixed note, with front months down ¼ to 1 ¾ cents and new crop contracts up ¾ to 2 ¾ cents. The CmdtyView national average Cash Corn price was down 1 1/2 cents at \$3.83 3/4.

The wheat complex posted mixed trade on Tuesday, as the soft red and hard red spreads were unwinding. Chicago SRW contracts were 3 ½ to 6 ¼ cents in the green at the close. KC HRW futures were steady to down 6 ¼ cents on the day. MPLS spring wheat posted Tuesday session losses of 1 ¾ to 4 ¾ cents.



Future Settlement Price Wednesday, June 17th, 2026					
Instrument	Last	Net Change	High	Low	Volume
S & P 500	7,606.00	18.75	7,606.50	7,581.25	38,105.00
NASDAQ 100	30,478.50	164.75	30,481.25	30,306.50	34,898.00
Dow Jones	52,526.00	56.00	52,568.00	52,408.00	3,638.00
Gold	4,347.70	-6.70	4,369.80	4,346.80	10,368.00
Silver	70.07	0.06	70.62	69.86	3,042.00
Copper	6.50	0.01	6.54	6.43	44,089.00
Crude Oil	75.07	-0.20	76.06	74.72	13,650.00
Platinum	1,814.70	41.90	1,826.00	1,747.10	15,896.00
Palladium	1,370.70	8.70	1,383.00	1,331.00	3,344.00
Natural Gas	3.25	0.01	3.26	3.24	2,634.00
Wheat	605-6	-3.00	606-0	602-6	4,174.00
Soy Beans	1153-4	7.00	1154-0	1144-4	8,653.00
Corn	442-2	-2.00	443-4	441-4	2,877.00

Daily Swings (The Pivot Levels)							
Instrument	Trading Range						
	S3	S2	S1	Pivot	R1	R2	R3
Dow Jones	50,793.75	51,079.15	51,375.09	51,660.49	51,956.43	52,241.83	52,537.77
S & P 500	7,460.21	7,488.48	7,521.38	7,549.65	7,582.55	7,610.82	7,643.72
NASDAQ 100	30,055.80	30,170.72	30,357.32	30,472.24	30,658.85	30,773.76	30,960.37
Gold	4,276.26	4,301.48	4,326.06	4,351.28	4,375.86	4,401.08	4,425.66
Silver	66.72	67.91	68.93	70.12	71.14	72.33	73.35
Copper	6.11	6.19	6.34	6.48	6.54	6.60	6.65
Crude Oil	91.86	94.01	96.05	77.90	80.28	83.96	86.34
Platinum	1,947.15	1,991.50	2,078.55	1,793.0	1,838.94	1,871.92	1,917.84
Palladium	1,428.59	1,451.67	1,493.84	1,359.0	1,387.16	1,411.08	1,439.16
Natural Gas	2.67	2.73	2.83	3.22	3.31	3.36	3.45
Wheat	606.95	613.41	626.33	594.33	605.91	615.83	627.41
Cotton	81.27	82.76	85.27	77.64	78.76	79.76	80.88
Corn	467.49	469.44	472.22	415.75	419.00	424.25	427.50

Source: - News & Quotes (Reuters, Investing, Bloomberg, FXStreet, Barchart)

Disclaimer: This document has been prepared by IGI Finex Securities Limited and is for information purposes only. Whilst every effort has been made to ensure that all the information (including any recommendations or opinions expressed) contained in this document (the information) is not misleading or unreliable, IGI Finex Securities Limited makes no representation as to the accuracy or completeness of the information. Neither IGI Finex Securities Limited nor any director, officer or employee of IGI Finex Securities Limited shall in any manner be liable or responsible for any loss that may be occasioned as consequence of a party relying on the information. This document takes no account of the investment objectives, financial situation and particular needs of investors, who shall seek further professional advice before making any investment decision. This document and the information may not be reproduced, distributed or published by any recipient for any purpose.

Contact Details

Commodity Team

Zaeem Haider Khan	Head of Commodities	Tel: (+92-21) 35301405	zaeem.haider@igi.com.pk
Shakeel Ahmad	Branch Manager – Faisalabad	Tel: (+92-41) 2540843-45	shakeel.ahmad1@igi.com.pk
Ehsan Ul Haq	Trader – Lahore	Tel: (+92-42) 3830559-68	ehsan.haq@igi.com.pk
Dil Muhammad	Trader – Lahore	Tel: (+92-41) 2540843-45	dil.muhammad@igi.com.pk
Inamullah Shakir	Trader – Islamabad	Tel: (+92-21) 32429613-14	inam.ullah@igi.com.pk
Sheikh Muhammad Imran	Trader – Karachi	Tel: (+92-21) 35301684	imran.ahmed@igi.com.pk
Asif Saleem	Branch Manager – Rahim Yar Khan	Tel: (+92-68) 5871652-6	asif.saleem@igi.com.pk
Mahtab Ali	Branch Manager – Multan	Tel: (+92-61) 4512003	mahtab.ali@igi.com.pk

Research Team

Abdullah Farhan	Head of Research	Tel: (+92-21) 111-234-234 Ext: 912	abdullah.farhan@igi.com.pk
Sakina Makati	Research Analyst	Tel: (+92-21) 111-234-234 Ext: 810	sakina.makati@igi.com.pk
Syed Muzammil Hassan Rizvi	Research Analyst	Tel: (+92-21) 111-234-234 Ext: 569	muzammil.rizvi@igi.com.pk
Sufyan Siddiqui	Database Officer	Tel: (+92-21) 111-234-234 Ext: 888	sufyan.siddiqui@igi.com.pk

IGI Finex Securities Limited

Trading Rights Entitlement Certificate (TREC) Holder of Pakistan Stock Exchange Limited |
Corporate member of Pakistan Mercantile Exchange Limited
Website: www.igisecurities.com.pk

Head Office

Suite No 701-713, 7th Floor, The Forum, G-20,
Khayaban-e-Jami Block-09, Clifton, Karachi-75600
UAN: (+92-21) 111-444-001 | (+92-21) 111-234-234
Fax: (+92-21) 35309169, 35301780

Lahore Office

Shop # G-009, Ground Floor,
Packages Mall
Tel: (+92-42) 38303560-69
Fax: (+92-42) 38303559

Islamabad Office

3rd Floor, Kamran Centre,
Block- B, Jinnah Avenue, Blue Area
Tel: (+92-51) 2604861-2, 2604864,
2273439
Fax: (+92-51) 2273861

Faisalabad Office

Office No. 2, 5 & 8, Ground Floor, The
Regency International 949, The Mall
Faisalabad
Tel: (+92-41) 2540843-45

Rahim Yar Khan Office

Plot # 12, Basement of Khalid Market,
Model Town, Town Hall Road
Tel: (+92-68) 5871652-3
Fax: (+92-68) 5871651

Multan Office

Mezzanine Floor, Abdali Tower,
Abdali Road
Tel: (92-61) 4512003, 4571183