

# Commodities and Indices Market View

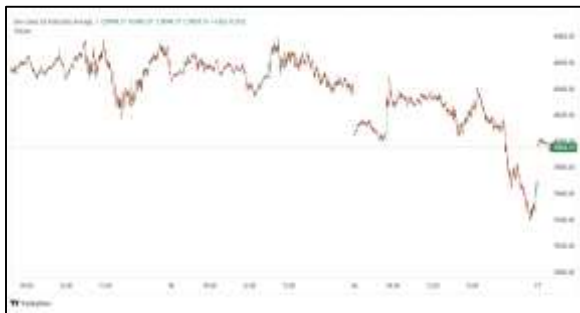
Monday, May 18, 2026



## Technicals



S&P 500	RSI (20:80)	Sto Fast
	67.34	92.60% 88.37%



Dow Jones	RSI (20:80)	Sto Fast
	55.61	73.49% 71.53%

## US Stock Market

DJIA	S&P 500	NASDAQ
49,526.17	7,408.50	26,225.14
-1.07%	-1.24%	-1.54%

U.S. stocks retreated from artificial-intelligence-fueled record highs on Friday, as spiking crude prices ignited global inflation fears.

All three major U.S. stock indexes veered sharply lower. Despite the selloff, the S&P 500 logged its seventh straight weekly gain, its longest since a nine-week streak ended in December 2023.

The Nasdaq and the Dow fell on the week, with the Nasdaq snapping a six-week winning streak.

The Dow Jones Industrial Average (.DJI), fell 537.29 points, or 1.07%, to 49,526.17, the S&P 500 (.SPX), lost 92.74 points, or 1.24%, to 7,408.50 and the Nasdaq Composite (.IXIC), lost 410.08 points, or 1.54%, to 26,225.15.

Declining issues outnumbered advancers by a 3.88-to-1 ratio on the NYSE. There were 128 new highs and 187 new lows on the NYSE. On the Nasdaq, 1,121 stocks rose and 3,623 fell as declining issues outnumbered advancers by a 3.23-to-1 ratio.

The S&P 500 posted 12 new 52-week highs and 32 new lows while the Nasdaq Composite recorded 53 new highs and 151 new lows.

## Major Economic Releases for Today

Period	Event	GMT	Forecast	Previous
MAY	Gross Domestic Product (QoQ) (Q1)	4:30	0.40%	0.30%
MAY	Gross Domestic Product Annualized (Q1)	4:30	1.70%	1.30%
MAY	Gross Domestic Product Deflator (YoY) (Q1)	4:30	3.10%	3.40%
MAY	Average Earnings Excluding Bonus (3Mo/Yr)	11:00	3.50%	3.60%
MAY	Average Earnings Including Bonus (3Mo/Yr)	11:00	3.80%	3.80%

## Dow Jones Industrial Average

At the close in NYSE, the Dow Jones Industrial Average fell 1.07%. The best performers of the session on the Dow Jones Industrial Average were Salesforce Inc (NYSE:CRM), which rose 3.56% or 5.97 points to trade at 173.55 at the close. Meanwhile, Microsoft Corporation (NASDAQ:MSFT) added 3.05% or 12.49 points to end at 421.92 and Chevron Corp (NYSE:CVX) was up 2.39% or 4.46 points to 191.10 in late trade.

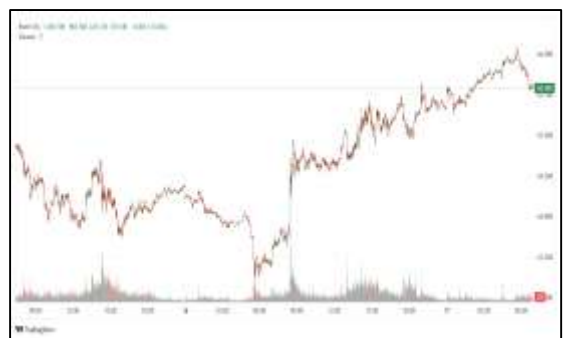


The worst performers of the session were NVIDIA Corporation (NASDAQ:NVDA), which fell 4.42% or 10.42 points to trade at 225.32 at the close. Boeing Co (NYSE:BA) declined 3.80% or 8.72 points to end at 220.49 and Caterpillar Inc (NYSE:CAT) was down 3.47% or 31.97 points to 888.25.



## NASDAQ 100

At the close in NYSE, the NASDAQ Composite index declined 1.54%. The top performers on the NASDAQ Composite were HCW Biologics Inc (NASDAQ:HCWB) which rose 262.02% to 1.22, P3 Health Partners Inc (NASDAQ:PIII) which was up 180.03% to settle at 11.29 and Murano Global Investments Plc (NASDAQ:MRNO) which gained 93.76% to close at 0.56.) which gained 123.51% to close at 2.99.



The worst performers were eLong Power Holding Ltd (NASDAQ:ELPW) which was down 51.03% to 0.95 in late trade, Work Medical Technology Group Ltd (NASDAQ:WOK) which lost 49.23% to settle at 0.66 and Lanzatech Global Inc (NASDAQ:LNZA) which was down 43.27% to 9.73 at the close.

## OIL

Oil prices extended gains on Monday as efforts to end the U.S.-Israeli war on Iran appeared to have stalled, after a nuclear power plant in the United Arab Emirates came under attack and as U.S. President Donald Trump is expected to discuss military options on Iran.



Brent crude futures climbed \$2.03, to \$111.29 a barrel by 0220 GMT. U.S. West Texas Intermediate crude was at \$107.73 a barrel, up \$2.31, or 2.19%, following a rise to \$108.70, its highest level since April 30.

## Precious and Base Metals

Gold prices steadied on Monday as dip-buying helped the market recover from earlier losses, after the metal slipped to a more than one-month low amid rising oil-driven inflation concerns and expectations that interest rates will stay higher for longer.

Spot gold was steady at \$4,540.36 per ounce, as of 0241 GMT, after hitting its lowest level since March 30 earlier in the session. U.S. gold futures for June delivery lost 0.4% to \$4,543.70.

Spot silver fell 0.8% to \$75.38 per ounce, platinum lost 0.1% to \$1,972.10, and palladium dropped 1.3% at \$1,394.75.

Gold fell to its lowest since March 30 earlier in the session as ongoing tensions in the Middle East.



## Traditional Agricultures

Soybeans were extending the late week losses with close Friday with contracts down 7 to 15 1/12 cents. July was down 31 cents on the week, as November was down 18 3/4 cents.

Corn futures closed the Friday session with contracts falling 7 to 11 3/4 cents as July ended the week with losses of 15 1/2 cents. December was 12 1/2 cents lower. The CmdtyView national average Cash Corn price was down 11 cents to \$4.16 3/4.

The wheat market retreated lower into the Friday close, with the three exchanges posting losses. Chicago SRW futures were down 11 to 22 1/4 cents on the day, with July 16 3/4 cents higher on the week. MPLS spring wheat closed the Friday session with contracts down 7 1/2 to 17 1/4 cents, as July was still up 6 3/4 cents on the week.



**Future Settlement Price Monday, May 18th, 2026**

Instrument	Last	Net Change	High	Low	Volume
S & P 500	7,385.75	-46.50	7,435.00	7,375.00	124,534.00
NASDAQ 100	29,055.50	-176.25	29,283.75	28,926.00	99,588.00
Dow Jones	49,192.00	-425.00	49,554.00	49,161.00	7,976.00
Gold	4,545.40	-16.50	4,559.00	4,483.50	32,358.00
Silver	75.52	-2.03	77.25	74.11	13,664.00
Copper	6.30	-0.32	6.59	6.27	68,402.00
Crude Oil	103.16	2.14	104.37	101.57	22,700.00
Platinum	1,991.80	-99.60	2,082.50	1,974.40	16,835.00
Palladium	1,426.30	-34.50	1,460.00	1,413.00	6,107.00
Natural Gas	3.18	0.06	3.20	3.13	5,982.00
Wheat	653-0	15.00	655-0	646-0	12,622.00
Soy Beans	1197-6	14.00	1209-4	1191-0	27,240.00
Corn	467-4	5.00	473-2	464-0	48,014.00

**Daily Swings (The Pivot Levels)**

Instrument	Trading Range						
	S3	S2	S1	Pivot	R1	R2	R3
Dow Jones	49,514.22	49,678.90	49,871.18	50,035.86	50,228.14	50,392.82	50,585.10
S & P 500	7,402.00	7,428.20	7,464.72	7,490.92	7,527.44	7,553.64	7,590.16
NASDAQ 100	29,065.17	29,207.64	29,393.97	29,536.43	29,722.76	29,865.22	30,051.55
Gold	4,502.06	4,516.89	4,528.74	4,543.47	4,555.42	4,570.25	4,582.10
Silver	74.27	74.92	75.94	76.59	77.61	78.27	79.29
Copper	6.22	6.25	6.27	6.29	6.31	6.34	6.36
Crude Oil	100.48	101.06	101.76	102.34	103.04	103.62	104.32
Platinum	1,956.20	1,968.10	1,977.50	1,989.4	1,998.80	2,010.70	2,020.10
Palladium	1,399.00	1,409.25	1,418.25	1,428.5	1,437.50	1,447.75	1,456.75
Natural Gas	2.93	2.95	2.98	3.01	3.04	3.06	3.10
Wheat	591.66	611.58	623.66	643.58	655.66	675.58	687.66
Cotton	74.66	77.30	78.96	81.60	83.26	85.90	87.56
Corn	430.50	442.75	449.25	461.50	468.00	480.25	486.75

**Source:** - News & Quotes (Reuters, Investing, Bloomberg, FXStreet, Barchart)

**Disclaimer:** This document has been prepared by IGI Finex Securities Limited and is for information purposes only. Whilst every effort has been made to ensure that all the information (including any recommendations or opinions expressed) contained in this document (the information) is not misleading or unreliable, IGI Finex Securities Limited makes no representation as to the accuracy or completeness of the information. Neither IGI Finex Securities Limited nor any director, officer or employee of IGI Finex Securities Limited shall in any manner be liable or responsible for any loss that may be occasioned as consequence of a party relying on the information. This document takes no account of the investment objectives, financial situation and particular needs of investors, who shall seek further professional advice before making any investment decision. This document and the information may not be reproduced, distributed or published by any recipient for any purpose.

# Contact Details

## Commodity Team

Zaeem Haider Khan	Head of Commodities	Tel: (+92-21) 35301405	zaeem.haider@igi.com.pk
Shakeel Ahmad	Branch Manager – Faisalabad	Tel: (+92-41) 2540843-45	shakeel.ahmad1@igi.com.pk
Ehsan Ul Haq	Trader – Lahore	Tel: (+92-42) 3830559-68	ehsan.haq@igi.com.pk
Dil Muhammad	Trader – Lahore	Tel: (+92-41) 2540843-45	dil.muhammad@igi.com.pk
Inamullah Shakir	Trader – Islamabad	Tel: (+92-21) 32429613-14	inam.ullah@igi.com.pk
Sheikh Muhammad Imran	Trader – Karachi	Tel: (+92-21) 35301684	imran.ahmed@igi.com.pk
Asif Saleem	Branch Manager – Rahim Yar Khan	Tel: (+92-68) 5871652-6	asif.saleem@igi.com.pk
Mahtab Ali	Branch Manager – Multan	Tel: (+92-61) 4512003	mahtab.ali@igi.com.pk

## Research Team

Abdullah Farhan	Head of Research	Tel: (+92-21) 111-234-234 Ext: 912	abdullah.farhan@igi.com.pk
Sakina Makati	Research Analyst	Tel: (+92-21) 111-234-234 Ext: 810	sakina.makati@igi.com.pk
Syed Muzammil Hassan Rizvi	Research Analyst	Tel: (+92-21) 111-234-234 Ext: 569	muzammil.rizvi@igi.com.pk
Sufyan Siddiqui	Database Officer	Tel: (+92-21) 111-234-234 Ext: 888	sufyan.siddiqui@igi.com.pk

## IGI Finex Securities Limited

Trading Rights Entitlement Certificate (TREC) Holder of Pakistan Stock Exchange Limited |  
Corporate member of Pakistan Mercantile Exchange Limited  
Website: [www.igisecurities.com.pk](http://www.igisecurities.com.pk)

### Head Office

Suite No 701-713, 7th Floor, The Forum, G-20,  
Khayaban-e-Jami Block-09, Clifton, Karachi-75600  
UAN: (+92-21) 111-444-001 | (+92-21) 111-234-234  
Fax: (+92-21) 35309169, 35301780

### Lahore Office

Shop # G-009, Ground Floor,  
Packages Mall  
Tel: (+92-42) 38303560-69  
Fax: (+92-42) 38303559

### Islamabad Office

3<sup>rd</sup> Floor, Kamran Centre,  
Block- B, Jinnah Avenue, Blue Area  
Tel: (+92-51) 2604861-2, 2604864,  
2273439  
Fax: (+92-51) 2273861

### Faisalabad Office

Office No. 2, 5 & 8, Ground Floor, The  
Regency International 949, The Mall  
Faisalabad  
Tel: (+92-41) 2540843-45

### Rahim Yar Khan Office

Plot # 12, Basement of Khalid Market,  
Model Town, Town Hall Road  
Tel: (+92-68) 5871652-3  
Fax: (+92-68) 5871651

### Multan Office

Mezzanine Floor, Abdali Tower,  
Abdali Road  
Tel: (92-61) 4512003, 4571183