

# Commodities and Indices Market View

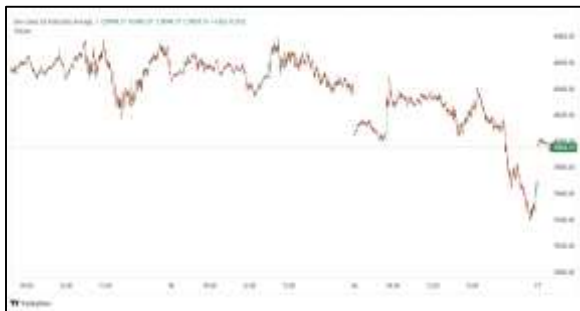
Monday, April 20, 2026



## Technicals



S&P 500	RSI (20:80)	Sto Fast
	74.15	99.15% 98.44%



Dow Jones	RSI (20:80)	Sto Fast
	68.73	95.71% 94.74%

## US Stock Market

DJIA	S&P 500	NASDAQ
49,447.43	7,126.06	24,468.48
+1.79%	+1.20%	+1.52%

The benchmark S&P 500 and the tech-heavy Nasdaq each rallied to their third record close in a row on Friday, while the blue-chip Dow marked its highest finish since late February, as investors cheered Iran's decision to open the Strait of Hormuz and were optimistic it could reach a deal with the United States to end their war.

The Dow Jones Industrial Average (.DJI), rose 868.71 points, or 1.79%, to 49,447.43, the S&P 500 (.SPX), gained 84.78 points, or 1.20%, to 7,126.06. Unofficially, for the week, the S&P 500 gained 4.53%, the Nasdaq rose 6.84%, and the Dow climbed 3.2%.

Advancing issues outnumbered decliners by a 4.03-to-1 ratio on the New York Stock Exchange, where there were 623 new highs and 46 new lows. On the Nasdaq, 3,685 stocks rose and 1,183 fell as advancing issues outnumbered decliners by a 3.11-to-1 ratio. The S&P 500 posted 49 new 52-week highs and no new lows.

Volume was relatively strong on U.S. exchanges, where 20.29 billion shares changed hands, compared with the 19.12 billion moving average for the last 20 sessions.

## Major Economic Releases for Today

Period	Event	GMT	Forecast	Previous
APR	Consumer Price Index (QoQ) (Q1)	3:45	0.80%	0.60%
APR	Consumer Price Index (YoY) (Q1)	3:45	2.90%	3.10%
APR	Average Earnings Excluding Bonus (3Mo/Yr)	11:00	3.50%	3.80%
APR	Average Earnings Including Bonus (3Mo/Yr)	11:00	3.60%	3.90%
APR	Retail Sales (MoM)	5:30	1.30%	0.60%

## Dow Jones Industrial Average

At the close in NYSE, the Dow Jones Industrial Average rose 1.79% to hit a new 1-month high. The best performers of the session on the Dow Jones Industrial Average were Sherwin-Williams Co (NYSE:SHW), which rose 3.67% or 12.22 points to trade at 345.55 at the close. Meanwhile, Home Depot Inc (NYSE:HD) added 3.62% or 12.22 points to end at 349.40 and Merck & Company Inc (NYSE:MRK) was up 3.13% or 3.61 points to 119.07 in late trade.

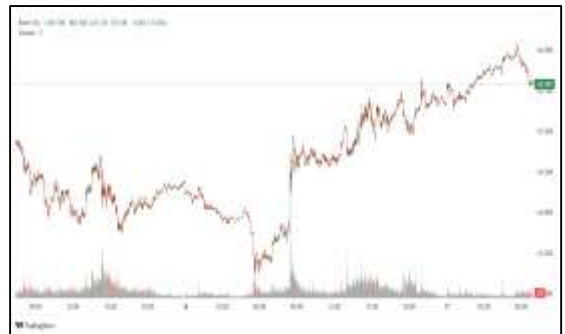


The worst performers of the session were Chevron Corp (NYSE:CVX), which fell 2.16% or 4.07 points to trade at 183.99 at the close. Verizon Communications Inc (NYSE:VZ) declined 0.49% or 0.23 points to end at 46.55 and Johnson & Johnson (NYSE:JNJ) was down 0.15% or 0.36 points to 234.18.



## NASDAQ 100

At the close in NYSE, the NASDAQ Composite index added 1.52%. The top performers on the NASDAQ Composite were Energy Focu (NASDAQ:EFOI) which rose 210.53% to 6.49, Forum Markets, Inc (NASDAQ:FRMM) which was up 81.01% to settle at 4.29 and Beasley Broadcast Group Inc (NASDAQ:BBGI) which gained 53.64% to close at 21.51.



The worst performers were LZ Technology Holdings Ltd (NASDAQ:LZMH) which was down 84.07% to 0.17 in late trade, Fitness Champs Holdings Ltd (NASDAQ:FCHL) which lost 76.88% to settle at 0.36 and Cheetah Net Supply Chain Service Inc (NASDAQ:CTNT) which was down 40.73% to 0.10 at the close.

## OIL

Oil prices rebounded more than 6% on Monday after tumbling more than 9% on Friday on news the Strait of Hormuz is closed again after both the U.S. and Iran said the other party had violated their ceasefire deal by attacking ships over the weekend.

Brent crude futures jumped \$6.11, or 6.76%, to \$96.49 a barrel by 2327 GMT and U.S. West Texas Intermediate was at \$90.38 a barrel, up \$6.53, or 7.79%.



## Precious and Base Metals

Gold prices fell on Monday as the dollar firmed, while news the Strait of Hormuz is closed again pushed oil prices higher and revived inflation fears.

Spot gold was down 0.7% at \$4,793.98 per ounce, as of 0351 GMT, after hitting its lowest level since April 13 earlier in the session. U.S. gold futures for June delivery fell 1.4% to \$4,813.60.

While gold is considered an inflation hedge, higher interest rates crimp demand for the non-yielding asset.

Among other metals, spot silver fell 0.9% to \$80.04 per ounce, platinum fell 0.5% to \$2,093.56, while palladium was steady at \$1,558.60.



## Traditional Agricultures

Soybeans closed with Friday gains of ½ to 4 ¾ cents across the board, with Marh slipping 8 ½ cents on the week. The cmdtyView national average Cash Bean price was up 4 cents at \$11.02.

Corn futures closed the Friday session with most contracts fractionally to 2 ½ cents higher, shrugging off early weakness. July was an exception, down ¼ cent. The CmdtyView national average Cash Corn price was up 1/2 cent at \$4.12 3/4.



The wheat complex closed with winter wheat weakness, with spring wheat higher on Friday. Chicago SRW futures were steady in some deferreds to 7 1/4 cents lower in the front months, as May was still up 20 ¼ cents this week. KC HRW futures were 1 ½ to 6 cents lower on Friday, with the weekly gain at 46 cents. MPLS spring wheat was up 1 1/4 to 3 3/4 cents, with May up 41 ¾ cents.



**Future Settlement Price Monday, April 20th, 2026**

Instrument	Last	Net Change	High	Low	Volume
S & P 500	7,117.75	-43.75	7,126.75	7,085.00	87,223.00
NASDAQ 100	26,665.25	-160.25	26,714.75	26,535.00	49,756.00
Dow Jones	49,280.00	-361.00	49,324.00	49,090.00	8,929.00
Gold	4,811.30	-68.30	4,834.50	4,752.00	36,729.00
Silver	79.99	-1.85	80.76	78.72	10,736.00
Copper	6.17	0.04	6.19	6.08	17,659.00
Crude Oil	87.74	5.15	89.60	86.46	64,652.00
Platinum	2,141.70	29.50	2,170.00	2,074.20	11,818.00
Palladium	1,600.80	19.50	1,615.50	1,547.50	3,296.00
Natural Gas	2.72	0.04	2.73	2.69	3,218.00
Wheat	606-6	-2.00	610-0	604-0	2,171.00
Soy Beans	1179-6	-6.00	1182-4	1177-6	3,547.00
Corn	458-6	1.00	459-4	456-4	13,240.00

**Daily Swings (The Pivot Levels)**

Instrument	Trading Range						
	S3	S2	S1	Pivot	R1	R2	R3
Dow Jones	48,036.84	48,187.11	48,382.91	48,533.18	48,728.98	48,879.25	49,075.05
S & P 500	6,973.42	6,990.97	7,016.13	7,033.68	7,058.84	7,076.39	7,101.55
NASDAQ 100	25,877.39	25,995.52	26,164.26	26,282.39	26,451.13	26,569.26	26,738.00
Gold	4,683.30	4,717.65	4,746.06	4,780.41	4,808.82	4,843.17	4,871.58
Silver	77.44	78.10	78.59	79.24	79.73	80.39	80.88
Copper	5.94	5.96	6.00	6.02	6.06	6.08	6.12
Crude Oil	85.29	86.33	87.47	88.51	89.65	90.69	91.83
Platinum	2,038.94	2,054.57	2,070.24	2,085.8	2,101.54	2,117.17	2,132.84
Palladium	1,524.50	1,534.50	1,546.00	1,556.0	1,567.50	1,577.50	1,589.00
Natural Gas	2.67	2.68	2.70	2.71	2.73	2.74	2.77
Wheat	562.09	572.42	581.84	592.17	601.59	611.92	621.34
Cotton	74.76	75.81	77.82	78.87	80.88	81.93	83.94
Corn	436.59	439.92	444.34	447.67	452.09	455.42	459.84

**Source:** - News & Quotes (Reuters, Investing, Bloomberg, FXStreet, Barchart)

**Disclaimer:** This document has been prepared by IGI Finex Securities Limited and is for information purposes only. Whilst every effort has been made to ensure that all the information (including any recommendations or opinions expressed) contained in this document (the information) is not misleading or unreliable, IGI Finex Securities Limited makes no representation as to the accuracy or completeness of the information. Neither IGI Finex Securities Limited nor any director, officer or employee of IGI Finex Securities Limited shall in any manner be liable or responsible for any loss that may be occasioned as consequence of a party relying on the information. This document takes no account of the investment objectives, financial situation and particular needs of investors, who shall seek further professional advice before making any investment decision. This document and the information may not be reproduced, distributed or published by any recipient for any purpose.

# Contact Details

## Commodity Team

Zaeem Haider Khan	Head of Commodities	Tel: (+92-21) 35301405	zaeem.haider@igi.com.pk
Shakeel Ahmad	Branch Manager – Faisalabad	Tel: (+92-41) 2540843-45	shakeel.ahmad1@igi.com.pk
Ehsan Ul Haq	Trader – Lahore	Tel: (+92-42) 3830559-68	ehsan.haq@igi.com.pk
Dil Muhammad	Trader – Lahore	Tel: (+92-41) 2540843-45	dil.muhammad@igi.com.pk
Inamullah Shakir	Trader – Islamabad	Tel: (+92-21) 32429613-14	inam.ullah@igi.com.pk
Sheikh Muhammad Imran	Trader – Karachi	Tel: (+92-21) 35301684	imran.ahmed@igi.com.pk
Asif Saleem	Branch Manager – Rahim Yar Khan	Tel: (+92-68) 5871652-6	asif.saleem@igi.com.pk
Mahtab Ali	Branch Manager – Multan	Tel: (+92-61) 4512003	mahtab.ali@igi.com.pk

## Research Team

Abdullah Farhan	Head of Research	Tel: (+92-21) 111-234-234 Ext: 912	abdullah.farhan@igi.com.pk
Sakina Makati	Research Analyst	Tel: (+92-21) 111-234-234 Ext: 810	sakina.makati@igi.com.pk
Syed Muzammil Hassan Rizvi	Research Analyst	Tel: (+92-21) 111-234-234 Ext: 569	muzammil.rizvi@igi.com.pk
Sufyan Siddiqui	Database Officer	Tel: (+92-21) 111-234-234 Ext: 888	sufyan.siddiqui@igi.com.pk

## IGI Finex Securities Limited

Trading Rights Entitlement Certificate (TREC) Holder of Pakistan Stock Exchange Limited |  
Corporate member of Pakistan Mercantile Exchange Limited  
Website: [www.igisecurities.com.pk](http://www.igisecurities.com.pk)

### Head Office

Suite No 701-713, 7th Floor, The Forum, G-20,  
Khayaban-e-Jami Block-09, Clifton, Karachi-75600  
UAN: (+92-21) 111-444-001 | (+92-21) 111-234-234  
Fax: (+92-21) 35309169, 35301780

### Lahore Office

Shop # G-009, Ground Floor,  
Packages Mall  
Tel: (+92-42) 38303560-69  
Fax: (+92-42) 38303559

### Islamabad Office

3<sup>rd</sup> Floor, Kamran Centre,  
Block- B, Jinnah Avenue, Blue Area  
Tel: (+92-51) 2604861-2, 2604864,  
2273439  
Fax: (+92-51) 2273861

### Faisalabad Office

Office No. 2, 5 & 8, Ground Floor, The  
Regency International 949, The Mall  
Faisalabad  
Tel: (+92-41) 2540843-45

### Rahim Yar Khan Office

Plot # 12, Basement of Khalid Market,  
Model Town, Town Hall Road  
Tel: (+92-68) 5871652-3  
Fax: (+92-68) 5871651

### Multan Office

Mezzanine Floor, Abdali Tower,  
Abdali Road  
Tel: (92-61) 4512003, 4571183