

# Commodities and Indices Market View

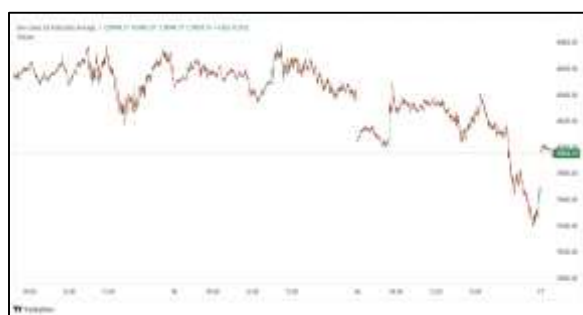
Tuesday, January 20, 2026



## Technicals



S&P 500	RSI (20:80)	Sto Fast
	56.63	75.07% 69.57%



Dow Jones	RSI (20:80)	Sto Fast
	60.16	81.07% 82.24%

## US Stock Market

DJIA	S&P 500	NASDAQ
49,359.33	6,940.01	23,515.39
-0.17%	-0.06%	-0.06%

U.S. stocks ended nearly flat on Friday in a choppy session ahead of the long weekend, and all three major indexes posted losses for the week as fourth-quarter earnings season kicked off.

The Dow Jones Industrial Average (.DJI), fell 83.11 points, or 0.17%, to 49,359.33, the S&P 500 (.SPX), lost 4.46 points, or 0.06%, to 6,940.01 and the Nasdaq Composite (.IXIC), lost 14.63 points, or 0.06%, to 23,515.39.

For the week, the S&P 500 was down 0.38%, the Nasdaq declined 0.66% and the Dow fell 0.29%.

Most of the major S&P 500 sector also ended with gains for the week.

Declining issues outnumbered advancers by a 1.19-to-1 ratio on the NYSE. There were 423 new highs and 64 new lows on the NYSE.

On the Nasdaq, 2,034 stocks rose and 2,719 fell as declining issues outnumbered advancers by a 1.34-to-1 ratio.

Volume on U.S. exchanges was 18.77 billion shares, compared with the 16.85 billion average for the full session over the last 20 trading days.

## Major Economic Releases for Today

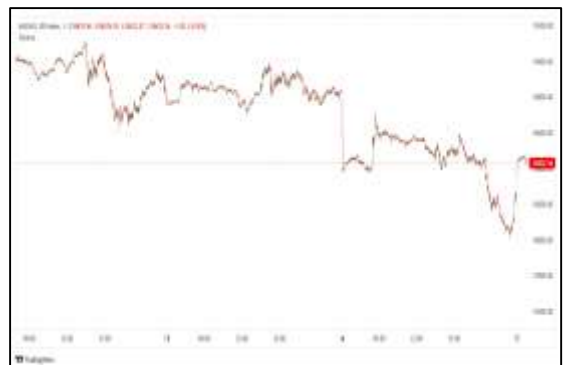
Period	Event	GMT	Forecast	Previous
JAN	Consumer Price Index (MoM)	12:00	0.40%	-0.20%
JAN	Consumer Price Index (YoY)	12:00	3.30%	3.20%
JAN	Core Consumer Price Index (YoY)	12:00	3.20%	3.20%
JAN	PPI Core Output (MoM) n.s.a	12:00	--	0.00%
JAN	PPI Core Output (YoY) n.s.a	12:00	--	3.50%

## Dow Jones Industrial Average

At the close in NYSE, the Dow Jones Industrial Average lost 0.17%. The best performers of the session on the Dow Jones Industrial Average were International Business Machines (NYSE:IBM), which rose 2.59% or 7.72 points to trade at 305.67 at the close. Meanwhile, American Express Company (NYSE:AXP) added 2.09% or 7.48 points to end at 364.85 and Honeywell International Inc (NASDAQ:HON) was up 2.06% or 4.44 points to 219.46 in late trade.



The worst performers of the session were Salesforce Inc (NYSE:CRM), which fell 2.76% or 6.45 points to trade at 227.08 at the close. Unitedhealth Group (NYSE:UNH) declined 2.34% or 7.94 points to end at 331.02 and Walt Disney Company (NYSE:DIS) was down 1.95% or 2.21 points to 111.20.



## NASDAQ 100

At the close in NYSE, the NASDAQ Composite index fell 0.06%. The top performers on the NASDAQ Composite were Venus Concept Inc (NASDAQ:VERO) which rose 451.89% to 7.89, Jeffs Brands Ltd Unit (NASDAQ:JFBR) which was up 131.16% to settle at 1.29 and Jaguar Health Inc (NASDAQ:JAGX) which gained 87.05% to close at 1.43.



The worst performers were ECD Automotive Design Inc (OTC:ECDA) which was down 93.51% to 0.02 in late trade, TryHard Holdings Ltd (NASDAQ:THH) which lost 87.37% to settle at 0.96 and Springview Holdings Ltd (NASDAQ:SPHL) which was down 57.32% to 7.43 at the close.

## OIL

Oil prices rose on Tuesday after better-than-expected economic growth data from China lifted demand optimism, with markets also watching President Donald Trump's threats of increased U.S. tariffs on European nations over his desire to buy Greenland.



Brent futures rose 19 cents, or 0.3%, to \$64.13 a barrel by 0100 GMT. The U.S. West Texas Intermediate crude contract for February, which expires on Tuesday, was up 25 cents, or 0.4%, from Friday's close to \$59.69.

## Precious and Base Metals

Gold and silver traded near record highs on Tuesday, as U.S. President Donald Trump's threats to acquire Greenland soured global sentiment and sparked a rush into safe-haven assets.

Spot gold was up 0.1% at \$4,675.32 per ounce, as of 0336 GMT, after scaling an all-time high of \$4,689.39 in the previous session. U.S. gold futures for February delivery climbed 1.9% to \$4,680.30 per ounce.



Gold, which does not yield interest, typically performs well during periods of low interest rates.

Spot silver fell 1.4% to \$93.33 an ounce, after hitting a record high of \$94.72 earlier in the session.



Among other precious metals, spot platinum slid 1.8% to \$2,331.20 an ounce, while palladium dropped 2% to \$1,804.15.

## Traditional Agriculture

Soybeans posted 4 to 5 cent gains across most contracts on Friday, as March was down just 4 ¾ cents on the week. The cmdtyView national average Cash Bean price was 5 1/4 cents higher at \$9.87 1/4.



Corn futures closed the Friday session with contracts 4 to 5 cents higher in the front months, taking back some early week losses. March was still down 21 cents on the week, a 4.71% loss. The CmdtyView national average Cash Corn price is up 6 cents at \$3.89 1/2.



The wheat complex rallied into the long weekend with gains across the three markets. KC HRW futures saw Friday gains of 9 to 10 cents in the nearbys. MPLS spring wheat was up 2 to 3 cents across the front months on Friday.

Future Settlement Price Tuesday, January 20th , 2 0 2 6					
Instrument	Last	Net Change	High	Low	Volume
S & P 500	6,907.50	-69.25	6,935.00	6,887.50	349,787.00
NASDAQ 100	25,400.00	-289.00	25,472.00	25,236.50	197,310.00
Dow Jones	49,100.00	-447.00	49,328.00	49,052.00	32,498.00
Gold	4,685.60	90.20	4,698.00	4,622.20	165,551.00
Silver	93.50	4.96	94.75	90.50	95,332.00
Copper	5.83	-0.16	6.02	5.77	67,253.00
Crude Oil	59.45	0.11	59.57	58.53	128,326.00
Platinum	2,322.70	-87.20	2,430.50	2,253.10	28,289.00
Palladium	1,821.30	-54.50	1,877.50	1,757.50	6,648.00
Natural Gas	2.93	0.24	3.03	2.85	88,980.00
Wheat	517-4	-4.00	520-2	516-6	2,253.00
Soy Beans	1060-0	0.00	1061-0	1053-0	9,012.00
Corn	424-2	-4.00	425-4	423-0	10,707.00

Daily Swings (The Pivot Levels)							
		Trading Range					
Instrument	S3	S2	S1	Pivot	R1	R2	R3
Dow Jones	48,855.22	49,028.16	49,235.30	49,408.24	49,615.38	49,788.32	49,995.46
S & P 500	6,887.07	6,912.50	6,928.48	6,953.91	6,969.89	6,995.32	7,011.30
NASDAQ 100	25,190.33	25,355.27	25,451.17	25,616.10	25,712.00	25,876.93	25,972.84
Gold	4,629.91	4,645.10	4,658.12	4,673.31	4,686.33	4,701.52	4,714.54
Silver	90.03	91.16	92.49	93.61	94.95	96.07	97.40
Copper	5.74	5.79	5.84	5.89	5.94	5.99	6.05
Crude Oil	57.79	58.18	58.78	59.17	59.77	60.16	60.76
Platinum	2,313.00	2,330.35	2,353.55	2,370.9	2,394.10	2,411.45	2,434.65
Palladium	1,775.41	1,803.08	1,840.66	1,868.3	1,905.91	1,933.58	1,971.16
Natural Gas	3.07	3.23	3.41	3.56	3.74	3.90	4.08
Wheat	518.25	518.25	518.25	518.25	518.25	518.25	518.25
Cotton	64.17	64.34	64.50	64.67	64.83	65.00	65.16
Corn	424.16	424.33	424.41	424.58	424.66	424.83	424.91

**Source:** - News & Quotes (Reuters, Investing, Bloomberg, FXStreet, Barchart)

**Disclaimer:** This document has been prepared by IGI Finex Securities Limited and is for information purposes only. Whilst every effort has been made to ensure that all the information (including any recommendations or opinions expressed) contained in this document (the information) is not misleading or unreliable, IGI Finex Securities Limited makes no representation as to the accuracy or completeness of the information. Neither IGI Finex Securities Limited nor any director, officer or employee of IGI Finex Securities Limited shall in any manner be liable or responsible for any loss that may be occasioned as consequence of a party relying on the information. This document takes no account of the investment objectives, financial situation and particular needs of investors, who shall seek further professional advice before making any investment decision. This document and the information may not be reproduced, distributed or published by any recipient for any purpose.

# Contact Details

## Commodity Team

Zaeem Haider Khan	Head of Commodities	Tel: (+92-21) 35301405	zaeem.haider@igi.com.pk
Shakeel Ahmad	Branch Manager – Faisalabad	Tel: (+92-41) 2540843-45	shakeel.ahmad1@igi.com.pk
Ehsan Ul Haq	Trader – Lahore	Tel: (+92-42) 3830559-68	ehsan.haq@igi.com.pk
Dil Muhammad	Trader – Lahore	Tel: (+92-41) 2540843-45	dil.muhammad@igi.com.pk
Inamullah Shakir	Trader – Islamabad	Tel: (+92-21) 32429613-14	inam.ullah@igi.com.pk
Sheikh Muhammad Imran	Trader – Karachi	Tel: (+92-21) 35301684	imran.ahmed@igi.com.pk
Asif Saleem	Branch Manager – Rahim Yar Khan	Tel: (+92-68) 5871652-6	asif.saleem@igi.com.pk
Mahtab Ali	Branch Manager – Multan	Tel: (+92-61) 4512003	mahtab.ali@igi.com.pk

## Research Team

Abdullah Farhan	Head of Research	Tel: (+92-21) 111-234-234 Ext: 912	abdullah.farhan@igi.com.pk
Sakina Makati	Research Analyst	Tel: (+92-21) 111-234-234 Ext: 810	sakina.makati@igi.com.pk
Syed Muzammil Hassan Rizvi	Research Analyst	Tel: (+92-21) 111-234-234 Ext: 569	muzammil.rizvi@igi.com.pk
Sufyan Siddiqui	Database Officer	Tel: (+92-21) 111-234-234 Ext: 888	sufyan.siddiqui@igi.com.pk

## IGI Finex Securities Limited

Trading Rights Entitlement Certificate (TREC) Holder of Pakistan Stock Exchange Limited |

Corporate member of Pakistan Mercantile Exchange Limited

Website: [www.igisecurities.com.pk](http://www.igisecurities.com.pk)

### Head Office

Suite No 701-713, 7th Floor, The Forum, G-20,  
Khayaban-e-Jami Block-09, Clifton, Karachi-75600

UAN: (+92-21) 111-444-001 | (+92-21) 111-234-234

Fax: (+92-21) 35309169, 35301780

### Lahore Office

Shop # G-009, Ground Floor,  
Packages Mall

Tel: (+92-42) 38303560-69

Fax: (+92-42) 38303559

### Islamabad Office

3<sup>rd</sup> Floor, Kamran Centre,  
Block- B, Jinnah Avenue, Blue Area  
Tel: (+92-51) 2604861-2, 2604864,  
2273439

Fax: (+92-51) 2273861

### Faisalabad Office

Office No. 2, 5 & 8, Ground Floor, The  
Regency International 949, The Mall  
Faisalabad

Tel: (+92-41) 2540843-45

### Rahim Yar Khan Office

Plot # 12, Basement of Khalid Market,  
Model Town, Town Hall Road

Tel: (+92-68) 5871652-3

Fax: (+92-68) 5871651

### Multan Office

Mezzanine Floor, Abdali Tower,  
Abdali Road

Tel: (92-61) 4512003, 4571183

IGI Finex Securities Limited

© Copyright 2024 IGI Finex Securities Limited