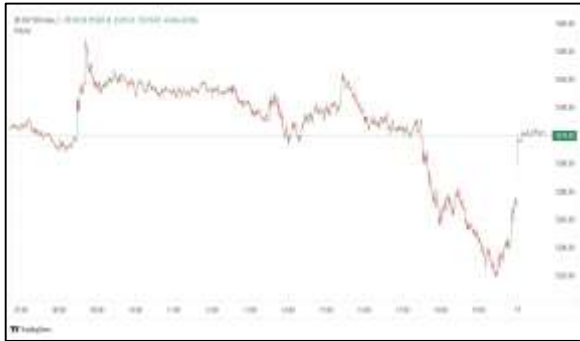


Commodities and Indices Market View

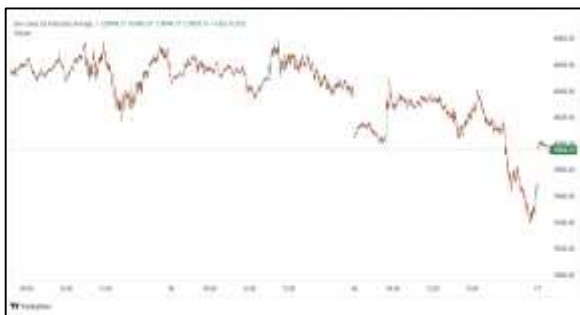
Tuesday, April 21, 2026



Technicals



S&P 500	RSI (20:80)	Sto Fast
	72.46	98.14% 96.68%



Dow Jones	RSI (20:80)	Sto Fast
	68.67	95.22% 94.76%

US Stock Market

DJIA	S&P 500	NASDAQ
49,442.56	7,109.14	24,404.39
-0.01%	-0.24%	-0.26%

U.S. stocks closed slightly lower on Monday, with each of the three major indexes coming off a third straight week of gains, as renewed U.S.-Iran tensions put the durability of a two-week ceasefire in question. Iran is considering attending peace talks with the U.S. in Pakistan, a senior Iranian official told Reuters, following moves by Islamabad to end a U.S. blockade of Iran's ports.

The Dow Jones Industrial Average (.DJI), shed 4.87 points, or 0.01%, to 49,442.56, the S&P 500 (.SPX), lost 16.92 points, or 0.24%, to 7,109.14 and the Nasdaq Composite (.IXIC), declined 64.09 points, or 0.26%, to 24,404.39.

Advancing issues outnumbered decliners by a 1.08-to-1 ratio on the NYSE, but declining issues outnumbered advancers by a 1.01-to-1 ratio on the Nasdaq.

The S&P 500 posted 44 new 52-week highs and no new lows while the Nasdaq Composite recorded 173 new highs and 42 new lows.

Volume on U.S. exchanges was 16.42 billion shares, compared with the 18.54 billion average for the full session over the last 20 trading days.

Major Economic Releases for Today

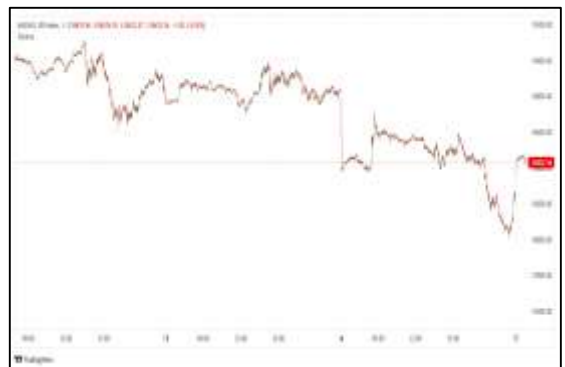
Period	Event	GMT	Forecast	Previous
APR	Consumer Price Index (QoQ) (Q1)	3:45	0.80%	0.60%
APR	Consumer Price Index (YoY) (Q1)	3:45	2.90%	3.10%
APR	Average Earnings Excluding Bonus (3Mo/Yr)	11:00	3.50%	3.80%
APR	Average Earnings Including Bonus (3Mo/Yr)	11:00	3.60%	3.90%
APR	Retail Sales (MoM)	5:30	1.30%	0.60%

Dow Jones Industrial Average

At the close in NYSE, the Dow Jones Industrial Average fell 0.01%. The best performers of the session on the Dow Jones Industrial Average were Salesforce Inc (NYSE:CRM), which rose 2.27% or 4.13 points to trade at 186.27 at the close. Meanwhile, JPMorgan Chase & Co (NYSE:JPM) added 2.16% or 6.70 points to end at 316.99 and Cisco Systems Inc (NASDAQ:CSCO) was up 1.69% or 1.46 points to 87.71 in late trade.



The worst performers of the session were 3M Company (NYSE:MMM), which fell 2.04% or 3.15 points to trade at 151.40 at the close. Procter & Gamble Company (NYSE:PG) declined 1.67% or 2.45 points to end at 144.48 and Merck & Company Inc (NYSE:MRK) was down 1.65% or 1.97 points to 117.10.



NASDAQ 100

At the close in NYSE, the NASDAQ Composite index fell 0.26%. The top performers on the NASDAQ Composite were Eshellgo Inc (NASDAQ:EHGO) which rose 1,685.71% to 2.50, Lixiang Education Holding Co Ltd (NASDAQ:LXEH) which was up 942.47% to settle at 1.69 and Enveric Biosciences Inc (NASDAQ:ENVB) which gained 98.77% to close at 3.62.



The worst performers were Passage Bio Inc (NASDAQ:PASG) which was down 46.44% to 6.25 in late trade, Cheetah Net Supply Chain Service Inc (NASDAQ:CTNT) which lost 41.45% to settle at 0.06 and Fitness Champs Holdings Ltd (NASDAQ:FCHL) which was down 36.47% to 0.23 at the close.

OIL

Oil prices fell on Tuesday, reversing gains in the previous session, on expectations peace talks between the U.S. and Iran will take place this week and allow more supply to flow from the key Middle East producing region.



Brent crude futures declined 54 cents, or 0.6%, at \$94.94 a barrel at 0300 GMT. U.S. West Texas Intermediate (WTI) for May fell \$1.11, or 1.2%, to \$88.50.

Precious and Base Metals

Gold prices eased on Tuesday as the dollar firmed, while investors waited to see if the U.S. and Iran are meeting this week for peace talks after renewed tensions over the weekend.

Spot gold was down 0.2% at \$4,807.91 per ounce, as of 0217 GMT, extending its fall from Monday when it hit the lowest level since April 13. U.S. gold futures for June delivery were steady at \$4,827.30.

Gold prices have fallen about 8% since the U.S. and Israel launched strikes on Iran in late February.

Among other metals, spot silver fell 0.6% to \$79.40 per ounce, platinum lost 0.7% to \$2,074, while palladium was up 0.3% at \$1,556.16.



Traditional Agricultures

Soybeans slipped lower in the front months into the Monday close, down $\frac{3}{4}$ to $1\frac{1}{2}$ and $\frac{1}{2}$ to 2 $\frac{1}{4}$ cents higher in the deferreds. The cmdtyView national average Cash Bean price was down $\frac{3}{4}$ cent at \$11.01 $\frac{1}{4}$.

Corn futures posted Monday gains of $1\frac{1}{4}$ to 3 $\frac{1}{4}$ cents across the board. The CmdtyView national average Cash Corn price was up 3 $\frac{1}{2}$ cents at \$4.15 $\frac{1}{4}$.

The wheat complex was mixed across the three exchanges on Monday with HRW weakness. Chicago SRW futures were up $3\frac{3}{4}$ to $7\frac{1}{4}$ cents across the board. KC HRW futures were $1\frac{1}{2}$ to 2 $\frac{1}{2}$ cents lower on Monday. MPLS spring wheat was steady to 4 cents higher.



Future Settlement Price Tuesday, April 21st, 2026

Instrument	Last	Net Change	High	Low	Volume
S & P 500	7,158.50	10.50	7,162.50	7,150.00	32,336.00
NASDAQ 100	26,818.25	69.50	26,838.50	26,756.50	24,300.00
Dow Jones	49,708.00	69.00	49,749.00	49,658.00	3,410.00
Gold	4,811.40	-17.40	4,854.80	4,810.50	18,083.00
Silver	78.93	-1.11	80.38	78.59	5,090.00
Copper	6.11	-0.07	6.16	6.03	25,200.00
Crude Oil	86.51	-0.91	86.78	85.50	14,939.00
Platinum	2,087.20	-54.50	2,113.40	2,064.30	9,396.00
Palladium	1,568.80	-32.00	1,575.50	1,539.00	2,802.00
Natural Gas	2.81	-0.02	2.82	2.79	1,299.00
Wheat	607-4	-3.00	608-0	603-4	1,541.00
Soy Beans	1184-2	-2.00	1185-0	1180-6	4,066.00
Corn	459-0	-3.00	460-2	459-0	2,966.00

Daily Swings (The Pivot Levels)

Instrument	Trading Range						
	S3	S2	S1	Pivot	R1	R2	R3
Dow Jones	47,988.99	48,388.90	48,918.16	49,318.07	49,847.33	50,247.24	50,776.50
S & P 500	7,011.59	7,043.07	7,084.56	7,116.04	7,157.53	7,189.01	7,230.50
NASDAQ 100	26,290.95	26,386.10	26,529.26	26,624.41	26,767.58	26,862.72	27,005.89
Gold	4,698.08	4,731.41	4,786.98	4,820.31	4,875.88	4,909.21	4,964.78
Silver	76.99	77.89	78.95	79.85	80.92	81.82	82.89
Copper	5.92	5.97	6.01	6.05	6.09	6.14	6.18
Crude Oil	81.48	83.48	84.84	86.84	88.20	90.20	91.56
Platinum	2,024.06	2,044.93	2,071.66	2,092.5	2,119.26	2,140.13	2,166.86
Palladium	1,505.50	1,522.75	1,548.00	1,565.2	1,590.50	1,607.75	1,633.00
Natural Gas	2.55	2.61	2.64	2.69	2.72	2.78	2.81
Wheat	586.46	592.42	599.71	605.67	612.96	618.92	626.21
Cotton	77.49	78.18	79.11	79.80	80.73	81.42	82.35
Corn	440.01	444.81	452.53	457.33	465.06	469.85	477.58

Source: - News & Quotes (Reuters, Investing, Bloomberg, FXStreet, Barchart)

Disclaimer: This document has been prepared by IGI Finex Securities Limited and is for information purposes only. Whilst every effort has been made to ensure that all the information (including any recommendations or opinions expressed) contained in this document (the information) is not misleading or unreliable, IGI Finex Securities Limited makes no representation as to the accuracy or completeness of the information. Neither IGI Finex Securities Limited nor any director, officer or employee of IGI Finex Securities Limited shall in any manner be liable or responsible for any loss that may be occasioned as consequence of a party relying on the information. This document takes no account of the investment objectives, financial situation and particular needs of investors, who shall seek further professional advice before making any investment decision. This document and the information may not be reproduced, distributed or published by any recipient for any purpose.

Contact Details

Commodity Team

Zaeem Haider Khan	Head of Commodities	Tel: (+92-21) 35301405	zaeem.haider@igi.com.pk
Shakeel Ahmad	Branch Manager – Faisalabad	Tel: (+92-41) 2540843-45	shakeel.ahmad1@igi.com.pk
Ehsan Ul Haq	Trader – Lahore	Tel: (+92-42) 3830559-68	ehsan.haq@igi.com.pk
Dil Muhammad	Trader – Lahore	Tel: (+92-41) 2540843-45	dil.muhammad@igi.com.pk
Inamullah Shakir	Trader – Islamabad	Tel: (+92-21) 32429613-14	inam.ullah@igi.com.pk
Sheikh Muhammad Imran	Trader – Karachi	Tel: (+92-21) 35301684	imran.ahmed@igi.com.pk
Asif Saleem	Branch Manager – Rahim Yar Khan	Tel: (+92-68) 5871652-6	asif.saleem@igi.com.pk
Mahtab Ali	Branch Manager – Multan	Tel: (+92-61) 4512003	mahtab.ali@igi.com.pk

Research Team

Abdullah Farhan	Head of Research	Tel: (+92-21) 111-234-234 Ext: 912	abdullah.farhan@igi.com.pk
Sakina Makati	Research Analyst	Tel: (+92-21) 111-234-234 Ext: 810	sakina.makati@igi.com.pk
Syed Muzammil Hassan Rizvi	Research Analyst	Tel: (+92-21) 111-234-234 Ext: 569	muzammil.rizvi@igi.com.pk
Sufyan Siddiqui	Database Officer	Tel: (+92-21) 111-234-234 Ext: 888	sufyan.siddiqui@igi.com.pk

IGI Finex Securities Limited

Trading Rights Entitlement Certificate (TREC) Holder of Pakistan Stock Exchange Limited |
Corporate member of Pakistan Mercantile Exchange Limited
Website: www.igisecurities.com.pk

Head Office

Suite No 701-713, 7th Floor, The Forum, G-20,
Khayaban-e-Jami Block-09, Clifton, Karachi-75600
UAN: (+92-21) 111-444-001 | (+92-21) 111-234-234
Fax: (+92-21) 35309169, 35301780

Lahore Office

Shop # G-009, Ground Floor,
Packages Mall
Tel: (+92-42) 38303560-69
Fax: (+92-42) 38303559

Islamabad Office

3rd Floor, Kamran Centre,
Block- B, Jinnah Avenue, Blue Area
Tel: (+92-51) 2604861-2, 2604864,
2273439
Fax: (+92-51) 2273861

Faisalabad Office

Office No. 2, 5 & 8, Ground Floor, The
Regency International 949, The Mall
Faisalabad
Tel: (+92-41) 2540843-45

Rahim Yar Khan Office

Plot # 12, Basement of Khalid Market,
Model Town, Town Hall Road
Tel: (+92-68) 5871652-3
Fax: (+92-68) 5871651

Multan Office

Mezzanine Floor, Abdali Tower,
Abdali Road
Tel: (92-61) 4512003, 4571183