

Commodities and Indices Market View

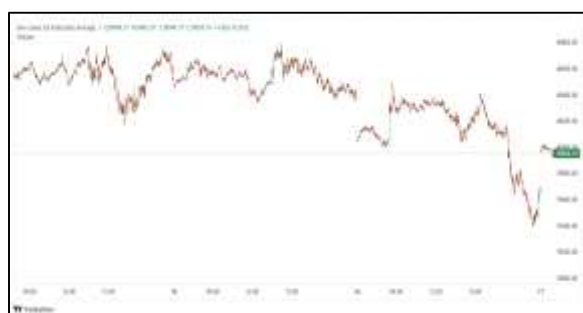
Tuesday, January 27, 2026



Technicals



S&P 500	RSI (20:80)	Sto Fast
	56.06	54.53% 69.62%



Dow Jones	RSI (20:80)	Sto Fast
	57.21	69.35% 74.43%

US Stock Market

DJIA	S&P 500	NASDAQ
49,412.40	6,950.23	23,601.36
+0.64%	+0.50%	+0.43%

The S&P 500 and the Nasdaq advanced for a fourth consecutive session on Monday, as investors geared up for a slew of mega-cap earnings and a Federal Reserve update on interest rate policy later this week.

Both indexes hit their highest levels in more than a week and registered their longest string of advances since December.

The Dow Jones Industrial Average (.DJI), rose 313.69 points, or 0.64%, to 49,412.40, the S&P 500 (.SPX), gained 34.62 points, or 0.50%, to 6,950.23 and the Nasdaq Composite (.IXIC), gained 100.11 points, or 0.43%, to 23,601.36.

Advancing issues outnumbered decliners by a 1.37-to-1 ratio on the NYSE where there were 631 new highs and 63 new lows.

On the Nasdaq, 2,360 stocks rose and 2,465 fell as declining issues outnumbered advancers by a 1.04-to-1 ratio.

On U.S. exchanges 18.41 billion shares changed hands on Monday compared with the 17.60 billion 20-day average.

Major Economic Releases for Today

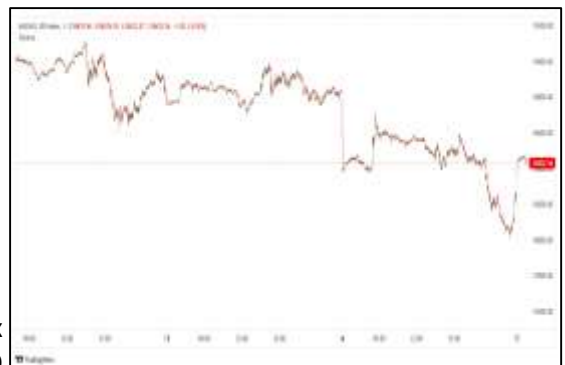
Period	Event	GMT	Forecast	Previous
JAN	Consumer Price Index (MoM)	5:30	--	0.00%
JAN	Consumer Price Index (YoY)	5:30	--	3.40%
JAN	Nondefense Capital Goods Orders ex Aircraft	6:30	--	0.50%
JAN	Trimmed Mean CPI (MoM)	5:30	--	0.30%
JAN	Trimmed Mean CPI (YoY)	5:30	--	3.20%

Dow Jones Industrial Average

At the close in NYSE, the Dow Jones Industrial Average gained 0.64%. The best performers of the session on the Dow Jones Industrial Average were Cisco Systems Inc (NASDAQ:CSCO), which rose 3.24% or 2.42 points to trade at 77.01 at the close. Meanwhile, Apple Inc (NASDAQ:AAPL) added 2.97% or 7.37 points to end at 255.41 and Caterpillar Inc (NYSE:CAT) was up 1.48% or 9.30 points to 635.92 in late trade.



The worst performers of the session were 3M Company (NYSE:MMM), which fell 1.94% or 3.16 points to trade at 159.52 at the close. Boeing Co (NYSE:BA) declined 1.52% or 3.82 points to end at 248.33 and Unitedhealth Group (NYSE:UNH) was down 1.30% or 4.62 points to 351.64.



NASDAQ 100

At the close in NYSE, the NASDAQ Composite index added 0.43%. The top performers on the NASDAQ Composite were 22nd Century Group Inc (NASDAQ:XXII) which rose 1,515.71% to 11.31, Brand Engagement Network Inc (NASDAQ:BNAI) which was up 276.70% to settle at 62.08 and Check Cap Ltd (NASDAQ:MBAL) which gained 112.08% to close at 3.16.



The worst performers were Dogness International Corp Class A (NASDAQ:DOGZ) which was down 76.21% to 2.70 in late trade, Happy City Holdings Ltd (NASDAQ:HCHL) which lost 55.01% to settle at 2.20 and Nvni Group Ltd (NASDAQ:NVNI) which was down 39.52% to 1.76 at the close.



OIL

Oil prices fell on Tuesday even as a massive winter storm hit crude production and affected refineries on the U.S. Gulf Coast.

Brent crude futures fell 28 cents, or 0.4%, to \$65.31 a barrel at 0145 GMT. U.S.

West Texas Intermediate crude was at \$60.39 a barrel, down 24 cents, or 0.4%.

Precious and Base Metals

Gold rose on Tuesday, after breaking through the \$5,100 mark for the first time in the previous session, as safe-haven demand lingered amid geopolitical uncertainty, while silver also hovered near all-time highs.

Spot gold climbed 1% to \$5,065.07 per ounce, as of 0329 GMT, after scaling a record \$5,110.50 the previous day. U.S. gold futures for February delivery lost 0.4% to \$5,059.90 per ounce.



Spot silver surged 5.2% to \$109.22 an ounce, after hitting a record high of \$117.69 on Monday. The white metal has already surged 53% so far this year.



Spot platinum lost 2.5% to \$2,658.19 per ounce after hitting a record \$2,918.80 in the previous session.

While palladium fell 1.3% to \$1,956.31.

Traditional Agricultures

Soybeans posted losses of 5 to 6 cents in the front months on Monday. The cmdtyView national average Cash Bean price was 5 1/2 cents lower at \$9.92 ¼.



Corn futures posted losses of 1 to 2 ¼ cents on Monday, fading back from the Friday gains. The CmdtyView national average Cash Corn price was down 2 1/4 cents at \$3.91 1/4.



The wheat complex saw weakness across the three markets on Monday. Chicago SRW futures were down 6 to 7 cents in the front months at the close. KC HRW futures were 10 to 11 cents in the red in the front months on Monday. MPLS spring wheat was down 5 to 6 cents on the day.

Future Settlement Price Tuesday, January 27th , 2026					
Instrument	Last	Net Change	High	Low	Volume
S & P 500	7,000.75	19.50	7,003.50	6,972.00	42,281.00
NASDAQ 100	25,990.75	142.25	26,002.75	25,838.50	22,073.00
Dow Jones	49,518.00	-47.00	49,535.00	49,357.00	3,618.00
Gold	5,064.60	-17.90	5,074.80	5,004.50	40,224.00
Silver	109.06	-6.45	111.28	102.90	42,383.00
Copper	6.02	0.07	6.03	5.89	64,897.00
Crude Oil	60.32	-0.31	60.87	60.20	12,279.00
Platinum	2,878.10	136.80	2,925.00	2,542.00	58,423.00
Palladium	2,189.30	161.70	2,195.50	1,978.00	11,767.00
Natural Gas	3.76	-0.14	3.88	3.73	10,337.00
Wheat	520-6	-7.00	523-0	520-0	2,466.00
Soy Beans	1060-2	-5.00	1062-2	1058-4	5,694.00
Corn	428-4	-2.00	428-6	427-6	3,490.00

Daily Swings (The Pivot Levels)							
		Trading Range					
Instrument	S3	S2	S1	Pivot	R1	R2	R3
Dow Jones	48,650.27	48,806.66	48,952.68	49,109.07	49,255.09	49,411.48	49,557.50
S & P 500	6,858.96	6,877.23	6,896.42	6,914.69	6,933.88	6,952.15	6,971.34
NASDAQ 100	25,182.36	25,308.69	25,457.08	25,583.41	25,731.80	25,858.13	26,006.52
Gold	4,895.88	4,959.49	5,018.17	5,081.78	5,140.46	5,204.07	5,262.75
Silver	83.98	92.93	99.79	108.7	115.60	124.56	131.42
Copper	5.71	5.80	5.86	5.95	6.00	6.09	6.15
Crude Oil	58.84	59.59	60.21	60.96	61.58	62.33	62.95
Platinum	2,091.84	2,316.92	2,473.24	2,698.3	2,854.64	3,079.72	3,236.04
Palladium	1,702.16	1,837.58	1,924.16	2,059.5	2,146.16	2,281.58	2,368.16
Natural Gas	3.42	3.54	3.69	3.80	3.96	4.07	4.23
Wheat	506.83	514.21	518.36	525.74	529.88	537.27	541.41
Cotton	60.81	61.68	62.32	63.19	63.83	64.70	65.34
Corn	422.60	424.99	426.62	429.01	430.64	433.03	434.67

Source: - News & Quotes (Reuters, Investing, Bloomberg, FXStreet, Barchart)

Disclaimer: This document has been prepared by IGI Finex Securities Limited and is for information purposes only. Whilst every effort has been made to ensure that all the information (including any recommendations or opinions expressed) contained in this document (the information) is not misleading or unreliable, IGI Finex Securities Limited makes no representation as to the accuracy or completeness of the information. Neither IGI Finex Securities Limited nor any director, officer or employee of IGI Finex Securities Limited shall in any manner be liable or responsible for any loss that may be occasioned as consequence of a party relying on the information. This document takes no account of the investment objectives, financial situation and particular needs of investors, who shall seek further professional advice before making any investment decision. This document and the information may not be reproduced, distributed or published by any recipient for any purpose.

Contact Details

Commodity Team

Zaeem Haider Khan	Head of Commodities	Tel: (+92-21) 35301405	zaeem.haider@igi.com.pk
Shakeel Ahmad	Branch Manager – Faisalabad	Tel: (+92-41) 2540843-45	shakeel.ahmad1@igi.com.pk
Ehsan Ul Haq	Trader – Lahore	Tel: (+92-42) 3830559-68	ehsan.haq@igi.com.pk
Dil Muhammad	Trader – Lahore	Tel: (+92-41) 2540843-45	dil.muhammad@igi.com.pk
Inamullah Shakir	Trader – Islamabad	Tel: (+92-21) 32429613-14	inam.ullah@igi.com.pk
Sheikh Muhammad Imran	Trader – Karachi	Tel: (+92-21) 35301684	imran.ahmed@igi.com.pk
Asif Saleem	Branch Manager – Rahim Yar Khan	Tel: (+92-68) 5871652-6	asif.saleem@igi.com.pk
Mahtab Ali	Branch Manager – Multan	Tel: (+92-61) 4512003	mahtab.ali@igi.com.pk

Research Team

Abdullah Farhan	Head of Research	Tel: (+92-21) 111-234-234 Ext: 912	abdullah.farhan@igi.com.pk
Sakina Makati	Research Analyst	Tel: (+92-21) 111-234-234 Ext: 810	sakina.makati@igi.com.pk
Syed Muzammil Hassan Rizvi	Research Analyst	Tel: (+92-21) 111-234-234 Ext: 569	muzammil.rizvi@igi.com.pk
Sufyan Siddiqui	Database Officer	Tel: (+92-21) 111-234-234 Ext: 888	sufyan.siddiqui@igi.com.pk

IGI Finex Securities Limited

Trading Rights Entitlement Certificate (TREC) Holder of Pakistan Stock Exchange Limited |

Corporate member of Pakistan Mercantile Exchange Limited

Website: www.igisecurities.com.pk

Head Office

Suite No 701-713, 7th Floor, The Forum, G-20,
Khayaban-e-Jami Block-09, Clifton, Karachi-75600

UAN: (+92-21) 111-444-001 | (+92-21) 111-234-234

Fax: (+92-21) 35309169, 35301780

Lahore Office

Shop # G-009, Ground Floor,
Packages Mall

Tel: (+92-42) 38303560-69

Fax: (+92-42) 38303559

Islamabad Office

3rd Floor, Kamran Centre,
Block- B, Jinnah Avenue, Blue Area
Tel: (+92-51) 2604861-2, 2604864,
2273439

Fax: (+92-51) 2273861

Faisalabad Office

Office No. 2, 5 & 8, Ground Floor, The
Regency International 949, The Mall
Faisalabad

Tel: (+92-41) 2540843-45

Rahim Yar Khan Office

Plot # 12, Basement of Khalid Market,
Model Town, Town Hall Road

Tel: (+92-68) 5871652-3

Fax: (+92-68) 5871651

Multan Office

Mezzanine Floor, Abdali Tower,
Abdali Road

Tel: (92-61) 4512003, 4571183

IGI Finex Securities Limited

© Copyright 2024 IGI Finex Securities Limited