

Commodities and Indices Market View

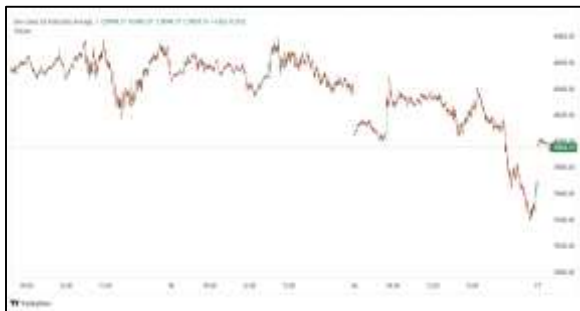
Thursday, April 30, 2026



Technicals



S&P 500	RSI (20:80)	Sto Fast
	67.09	95.44% 92.77%



Dow Jones	RSI (20:80)	Sto Fast
	57.49	73.47% 66.16%

US Stock Market

DJIA	S&P 500	NASDAQ
48,861.81	7,135.95	24,673.24
-0.57%	-0.04%	+0.04%

Wall Street oscillated on Wednesday, as investors juggled spiking crude prices, the U.S. Federal Reserve's interest-rate decision, and a quartet of high-profile earnings released after the closing bell.

The Dow Jones Industrial Average (.DJI), fell 280.12 points, or 0.57%, to 48,861.81, the S&P 500 (.SPX), lost 2.82 points, or 0.04%, to 7,135.98 and the Nasdaq Composite (.IXIC), gained 9.44 points, or 0.04%, to 24,673.24.

Declining issues outnumbered advancers by a 2.52-to-1 ratio on the NYSE. There were 187 new highs and 84 new lows on the NYSE.

On the Nasdaq, 1,474 stocks rose and 3,347 fell as declining issues outnumbered advancers by a 2.27-to-1 ratio.

The S&P 500 posted 20 new 52-week highs and 25 new lows while the Nasdaq Composite recorded 85 new highs and 124 new lows.

Volume on U.S. exchanges was 16.37 billion shares, compared with the 17.81 billion average for the full session over the last 20 trading days.

Major Economic Releases for Today

Period	Event	GMT	Forecast	Previous
APR	Gross Domestic Product (QoQ) (Q1)	1:00	0.20%	0.30%
APR	Gross Domestic Product (YoY) (Q1)	1:00	0.30%	0.40%
APR	Gross Domestic Product w.d.a (YoY) (Q1)	1:00	--	0.60%
APR	Core Harmonized Index of Consumer Prices (MoM)	2:00	--	0.80%
APR	Core Harmonized Index of Consumer Prices (YoY)	2:00	2.30%	2.30%

Dow Jones Industrial Average

At the close in NYSE, the Dow Jones Industrial Average lost 0.57%. The best performers of the session on the Dow Jones Industrial Average were Visa Inc Class A (NYSE:V), which rose 8.26% or 25.54 points to trade at 334.84 at the close. Meanwhile, Cisco Systems Inc (NASDAQ:CSCO) added 3.12% or 2.71 points to end at 89.57 and Chevron Corp (NYSE:CVX) was up 2.05% or 3.86 points to 192.22 in late trade.

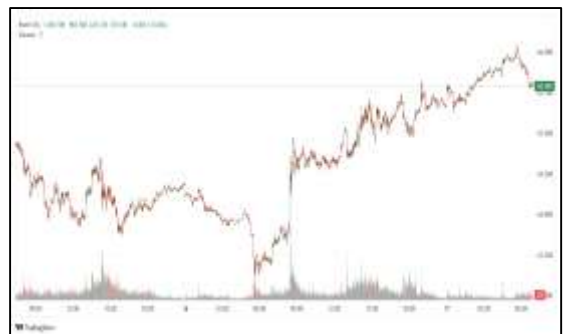


The worst performers of the session were Boeing Co (NYSE:BA), which fell 2.86% or 6.61 points to trade at 224.11 at the close. International Business Machines (NYSE:IBM) declined 2.55% or 5.94 points to end at 227.10 and Travelers Companies (NYSE:TRV) was down 2.51% or 7.77 points to 302.25.



NASDAQ 100

At the close in NYSE, the NASDAQ Composite index added 0.04%. The top performers on the NASDAQ Composite were Rising Dragon Acquisition Corp (NASDAQ:RDAC) which rose 322.45% to 20.32, Borealis Foods Inc (NASDAQ:BRLS) which was up 67.26% to settle at 1.89 and XTL Biopharmaceuticals Ltd ADR (NASDAQ:XTLB) which gained 51.49% to close at 3.56.



The worst performers were OSR Holdings Inc (NASDAQ:OSRH) which was down 38.19% to 0.46 in late trade, Sangamo Therapeutics Inc (NASDAQ:SGMO) which lost 33.93% to settle at 0.13 and American Rebel Holdings Inc (NASDAQ:AREB) which was down 33.06% to 0.40 at the close.

OIL

Oil prices rose on Thursday on a report the U.S. is considering potential military action against Iran to break the deadlock in negotiations to end the war, increasing concerns of more supply disruptions to already curtailed Middle East exports.



Brent crude futures for June rose \$5.27, or 4.5%, to \$123.30 a barrel as of 0347 GMT after gaining 6.1% in the previous session. U.S. West Texas Intermediate futures for June were up \$2.42, or 2.3%, at \$109.30 a barrel, after climbing 7% in the previous session.

Precious and Base Metals

Gold prices rebounded on Thursday from a one-month low hit the day before, though gains were capped as elevated oil prices kept fears alive of inflation and higher-for-longer interest rates.

Spot gold was up 0.3% at \$4,553.69 per ounce, as of 0417 GMT, after falling to its lowest level since March 31 in the previous session. U.S. gold futures for June delivery rose 0.1% to \$4,565.10.

While gold is considered an inflation hedge, high interest rates make yield-bearing assets more attractive, weighing on bullion's appeal.

Spot silver rose 0.7% to \$71.98 per ounce, platinum gained 1.8% to \$1,912.12, and palladium was up 0.3% at \$1,462.72.



Traditional Agricultures

Soybeans rounded out the Wednesday trade with most contracts up 2 ¼ to 9 ¼ cents, led by the old crop contracts. Some back months were fractionally to 2 cents lower. The cmdtyView national average Cash Bean price was up 10 cents at \$11.25.

Corn futures held on to gains on Wednesday, despite pulling off early highs. Most nearby contracts were fractionally to 2 ½ cents higher, with a few deferreds steady to fractionally lower. The CmdtyView national average Cash Corn price was up 1 1/4 cents at \$4.33 1/2.

The wheat complex fell off the early session highs on Wednesday, as month end profit taking got off to a day early start. Chicago SRW futures were down fractionally to 6 ¾ cents, with deferreds up ¼ to 3 ¼ cents. MPLS spring wheat was up 2 ¼ to 4 ½ cents across the board on Wednesday.



Future Settlement Price Thursday, April 30th, 2026					
Instrument	Last	Net Change	High	Low	Volume
S & P 500	7,155.75	-12.25	7,201.50	7,148.50	103,388.00
NASDAQ 100	27,300.00	-25.25	27,622.75	27,207.00	86,240.00
Dow Jones	48,725.00	-287.00	48,947.00	48,721.00	9,160.00
Gold	4,558.50	-3.00	4,594.10	4,550.80	15,692.00
Silver	72.41	0.32	73.47	71.65	4,743.00
Copper	5.93	-0.04	6.02	5.90	31,282.00
Crude Oil	109.64	2.76	110.29	106.45	34,220.00
Platinum	1,900.60	-58.20	1,960.40	1,880.10	12,981.00
Palladium	1,468.70	-1.00	1,481.00	1,439.00	3,271.00
Natural Gas	2.64	-0.01	2.66	2.63	2,408.00
Wheat	656-4	-1.00	657-6	648-2	9,029.00
Soy Beans	1205-6	2.00	1206-2	1195-2	12,128.00
Corn	479-6	2.00	480-0	475-4	11,567.00

Daily Swings (The Pivot Levels)							
Instrument	Trading Range						
	S3	S2	S1	Pivot	R1	R2	R3
Dow Jones	48,715.77	48,896.76	49,019.35	49,200.34	49,322.93	49,503.92	49,626.51
S & P 500	7,081.13	7,098.15	7,118.48	7,135.50	7,155.83	7,172.85	7,193.18
NASDAQ 100	26,660.98	26,769.29	26,899.15	27,007.46	27,137.33	27,245.63	27,375.50
Gold	4,421.30	4,471.93	4,522.84	4,573.47	4,624.38	4,675.01	4,725.92
Silver	68.45	69.83	71.05	72.43	73.66	75.04	76.27
Copper	5.77	5.84	5.89	5.96	6.01	6.08	6.13
Crude Oil	90.89	94.66	101.32	105.09	111.75	115.52	122.18
Platinum	1,787.60	1,834.30	1,867.25	1,913.9	1,946.90	1,993.60	2,026.55
Palladium	1,409.75	1,424.25	1,451.75	1,466.2	1,493.75	1,508.25	1,535.75
Natural Gas	2.17	2.39	2.52	2.74	2.86	3.09	3.21
Wheat	626.91	639.58	645.91	658.58	664.91	677.58	683.91
Cotton	77.56	78.13	78.66	79.23	79.76	80.33	80.86
Corn	469.67	471.90	474.44	476.67	479.22	481.44	483.99

Source: - News & Quotes (Reuters, Investing, Bloomberg, FXStreet, Barchart)

Disclaimer: This document has been prepared by IGI Finex Securities Limited and is for information purposes only. Whilst every effort has been made to ensure that all the information (including any recommendations or opinions expressed) contained in this document (the information) is not misleading or unreliable, IGI Finex Securities Limited makes no representation as to the accuracy or completeness of the information. Neither IGI Finex Securities Limited nor any director, officer or employee of IGI Finex Securities Limited shall in any manner be liable or responsible for any loss that may be occasioned as consequence of a party relying on the information. This document takes no account of the investment objectives, financial situation and particular needs of investors, who shall seek further professional advice before making any investment decision. This document and the information may not be reproduced, distributed or published by any recipient for any purpose.

Contact Details

Commodity Team

Zaeem Haider Khan	Head of Commodities	Tel: (+92-21) 35301405	zaeem.haider@igi.com.pk
Shakeel Ahmad	Branch Manager – Faisalabad	Tel: (+92-41) 2540843-45	shakeel.ahmad1@igi.com.pk
Ehsan Ul Haq	Trader – Lahore	Tel: (+92-42) 3830559-68	ehsan.haq@igi.com.pk
Dil Muhammad	Trader – Lahore	Tel: (+92-41) 2540843-45	dil.muhammad@igi.com.pk
Inamullah Shakir	Trader – Islamabad	Tel: (+92-21) 32429613-14	inam.ullah@igi.com.pk
Sheikh Muhammad Imran	Trader – Karachi	Tel: (+92-21) 35301684	imran.ahmed@igi.com.pk
Asif Saleem	Branch Manager – Rahim Yar Khan	Tel: (+92-68) 5871652-6	asif.saleem@igi.com.pk
Mahtab Ali	Branch Manager – Multan	Tel: (+92-61) 4512003	mahtab.ali@igi.com.pk

Research Team

Abdullah Farhan	Head of Research	Tel: (+92-21) 111-234-234 Ext: 912	abdullah.farhan@igi.com.pk
Sakina Makati	Research Analyst	Tel: (+92-21) 111-234-234 Ext: 810	sakina.makati@igi.com.pk
Syed Muzammil Hassan Rizvi	Research Analyst	Tel: (+92-21) 111-234-234 Ext: 569	muzammil.rizvi@igi.com.pk
Sufyan Siddiqui	Database Officer	Tel: (+92-21) 111-234-234 Ext: 888	sufyan.siddiqui@igi.com.pk

IGI Finex Securities Limited

Trading Rights Entitlement Certificate (TREC) Holder of Pakistan Stock Exchange Limited |
Corporate member of Pakistan Mercantile Exchange Limited
Website: www.igisecurities.com.pk

Head Office

Suite No 701-713, 7th Floor, The Forum, G-20,
Khayaban-e-Jami Block-09, Clifton, Karachi-75600
UAN: (+92-21) 111-444-001 | (+92-21) 111-234-234
Fax: (+92-21) 35309169, 35301780

Lahore Office

Shop # G-009, Ground Floor,
Packages Mall
Tel: (+92-42) 38303560-69
Fax: (+92-42) 38303559

Islamabad Office

3rd Floor, Kamran Centre,
Block- B, Jinnah Avenue, Blue Area
Tel: (+92-51) 2604861-2, 2604864,
2273439
Fax: (+92-51) 2273861

Faisalabad Office

Office No. 2, 5 & 8, Ground Floor, The
Regency International 949, The Mall
Faisalabad
Tel: (+92-41) 2540843-45

Rahim Yar Khan Office

Plot # 12, Basement of Khalid Market,
Model Town, Town Hall Road
Tel: (+92-68) 5871652-3
Fax: (+92-68) 5871651

Multan Office

Mezzanine Floor, Abdali Tower,
Abdali Road
Tel: (92-61) 4512003, 4571183