

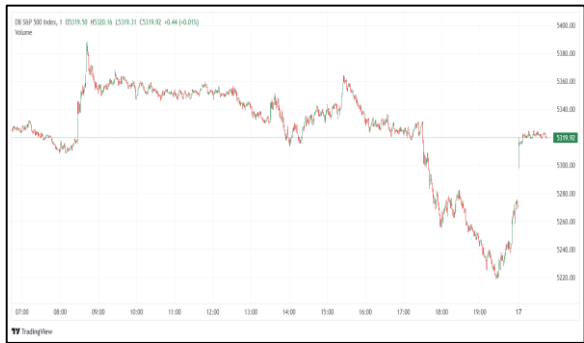
# Commodities and Indices Market View

Friday, August 8, 2025



SERVING YOU SINCE 1994

## Technicals



S&P 500	RSI (20:80)	Sto Fast
	58.23%	48.16% 53.84%



Dow Jones	RSI (20:80)	Sto Fast
	47.62%	41.83% 43.14%

## US Stock Market

DJIA	S&P 500	NASDAQ
43,968.64	6,340.00	21,242.70
-0.51%	-0.08%	+0.35%

The Dow and S&P 500 eased on Thursday, as shares of Eli Lilly dropped after data from its oral weight loss drug disappointed, while the Nasdaq eked out a record closing high.

The Dow Jones Industrial Average (.DJI), fell 224.48 points, or 0.51%, to 43,968.64, the S&P 500 (.SPX), lost 5.06 points, or 0.08%, to 6,340.00 and the Nasdaq Composite (.IXIC), gained 73.27 points, or 0.35%, to 21,242.70.

On the Nasdaq, 1,944 stocks rose and 2,622 fell as declining issues outnumbered advancers by a 1.35-to-1 ratio.

The S&P 500 has hit 15 record closing highs this year, while the Nasdaq has posted 17 all-time closing highs so far in 2025.

Declining issues outnumbered advancers by a 1.01-to-1 ratio on the NYSE. There were 232 new highs and 80 new lows on the NYSE.

Volume on U.S. exchanges was 17.40 billion shares, compared with the 18.23 billion average for the full session over the last 20 trading days.

## Major Economic Releases for Today

Period	Event	GMT	Forecast	Previous
JUL	RBNZ Inflation Expectations (QoQ) (Q3)	3:00	2.28%	2.29%
JUL	ISM Services PMI (Jul)	14:00	51.50%	50.80%
JUL	Employment Change (Q2)	22:45	-0.20%	0.10%
JUL	Unemployment Rate (Q2)	22:45	5.30%	5.10%
JUL	RBNZ Inflation Expectations (QoQ) (Q3)	3:00	--	2.90%

## Dow Jones Industrial Average

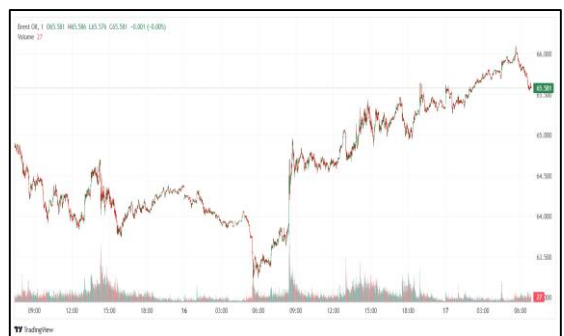
At the close in NYSE, the Dow Jones Industrial Average declined 0.51%. The best performers of the session on the Dow Jones Industrial Average were Apple Inc (NASDAQ:AAPL), which rose 3.18% or 6.78 points to trade at 220.03 at the close. Meanwhile, Verizon Communications Inc (NYSE:VZ) added 1.50% or 0.64 points to end at 42.99 and Coca-Cola Co (NYSE:KO) was up 1.32% or 0.92 points to 70.43 in late trade.

The worst performers of the session were Salesforce Inc (NYSE:CRM), which fell 3.33% or 8.29 points to trade at 240.88 at the close. Caterpillar Inc (NYSE:CAT) declined 2.48% or 10.60 points to end at 417.12 and Visa Inc Class A (NYSE:V) was down 2.25% or 7.65 points to 332.09.



## NASDAQ 100

At the close in NYSE, the NASDAQ Composite index climbed 0.35%. The top performers on the NASDAQ Composite were CIMG Inc (NASDAQ:IMG) which rose 111.60% to 0.42, Aveanna Healthcare Holdings Inc (NASDAQ:AVAH) which was up 49.36% to settle at 5.81 and Skywater Technology Inc (NASDAQ:SKYT) which gained 44.87% to close at 12.85.



The worst performers were Sabre Corp (NASDAQ:SABR) which was down 35.67% to 1.93 in late trade, Sana Biotechnology Inc (NASDAQ:SANA) which lost 30.12% to settle at 2.97 and Vivid Seats Inc (NASDAQ:SEAT) which was down 29.98% to 17.98 at the close.



## OIL

Oil prices fell on Friday, heading for their steepest weekly losses since late June as the latest round of U.S. tariffs weighed on the economic outlook and likely upcoming Trump-Putin talks raised the prospect of an ease in sanctions on Russia.

Brent crude futures were down 51 cents to \$65.92 a barrel at 0630 GMT, on track to decline more than 4% week-over-week. U.S. West Texas Intermediate crude futures were down 57 cents, or 0.89%, to \$63.31 a barrel, set to fall nearly 6% on a weekly basis.

## Precious and Base Metals

U.S. gold futures climbed to a record high on Friday after a report that the United States had imposed tariffs on imports of 1-kg gold bars, while spot gold stayed on track for a second straight weekly gain on tariff turmoil and U.S. rate-cut hopes.

Spot gold held steady at \$3,396.92 per ounce, as of 0734 GMT, after hitting its highest since July 23 earlier in the session. Bullion is up about 1% so far this week.

Elsewhere, spot silver fell 0.3% to \$38.41 per ounce, platinum was steady at \$1,333.88 and palladium was up 0.4% to \$1,155.25.



## Traditional Agricultures

Soybean futures closed with losses of 6 to 7 ½ cents across the front months on Wednesday. The cmdtyView national average Cash Bean price was down 6 cents at \$9.27 1/2.

Corn bulls were battling back on the Wednesday session, as contracts closed out the session with just fractional to 1 ¾ cent losses in most nearbys. The CmdtyView national average Cash Corn price was down 2 1/4 cents at \$3.63 3/4.

Wheat is showing very marginally mixed trade early on Wednesday. The wheat complex saw mixed action across the three exchanges on Wednesday, with spring wheat the weakest. Strength was led by the KC market, up 6 to 7 cents. CBT futures were fractionally higher across most contracts on Wednesday. MPLS spring wheat was showing steady to 1 ½ cents lower.



### Future Settlement Price Friday, August 8th, 2025

Instrument	Last	Net Change	High	Low	Volume
S & P 500	6,380.50	14.00	6,387.50	6,369.25	56,930.00
NASDAQ 100	23,552.00	55.75	23,583.00	23,503.00	37,155.00
Dow Jones	44,136.00	56.00	44,221.00	44,083.00	6,947.00
Gold	3,487.00	33.30	3,534.10	3,479.50	114,498.00
Silver	38.58	0.29	38.88	38.43	23,689.00
Copper	4.40	-0.01	4.45	4.39	24,924.00
Crude Oil	63.87	-0.01	63.97	63.19	32,769.00
Platinum	1,354.20	14.30	1,369.10	1,337.70	24,456.00
Palladium	1,171.10	23.50	1,185.00	1,155.50	5,715.00
Natural Gas	3.40	-0.02	3.41	3.38	2,439.00
Wheat	519-4	-1.00	521-0	516-2	3,345.00
Soy Beans	996-0	0.00	998-0	993-0	8,607.00
Corn	408-0	1.00	408-6	406-6	8,994.00

### Daily Swings (The Pivot Levels)

Instrument	Trading Range						
	S3	S2	S1	Pivot	R1	R2	R3
Dow Jones	43,536.17	43,729.99	43,920.86	44,114.6	44,305.55	44,499.37	44,690.24
S & P 500	6,220.41	6,254.89	6,277.04	6,311.52	6,333.67	6,368.15	6,390.30
NASDAQ 100	22,644.54	22,826.34	22,922.45	23,104.25	23,200.36	23,382.16	23,478.27
Gold	3,389.64	3,400.67	3,418.44	3,429.47	3,447.24	3,458.27	3,476.04
Silver	37.30	37.46	37.72	37.89	38.15	38.31	38.58
Copper	4.33	4.35	4.38	4.41	4.44	4.47	4.50
Crude Oil	59.98	61.81	63.09	64.92	66.20	68.03	69.31
Platinum	1,287.64	1,303.87	1,329.94	1,346.1	1,372.24	1,388.47	1,414.54
Palladium	1,087.34	1,114.92	1,138.34	1,165.9	1,189.34	1,216.92	1,240.34
Natural Gas	2.84	2.89	3.00	3.50	3.15	3.20	3.30
Wheat	499.66	501.83	505.16	507.33	510.66	512.83	516.16
Cotton	65.60	66.20	66.52	67.12	67.44	68.04	68.36
Corn	392.91	394.83	398.16	400.08	403.41	405.33	408.66

**Source:** - News & Quotes (Reuters, Investing, Bloomberg, FXStreet, Barchart)

**Disclaimer:** This document has been prepared by IGI Finex Securities Limited and is for information purposes only. Whilst every effort has been made to ensure that all the information (including any recommendations or opinions expressed) contained in this document (the information) is not misleading or unreliable, IGI Finex Securities Limited makes no representation as to the accuracy or completeness of the information. Neither IGI Finex Securities Limited nor any director, officer or employee of IGI Finex Securities Limited shall in any manner be liable or responsible for any loss that may be occasioned as consequence of a party relying on the information. This document takes no account of the investment objectives, financial situation and particular needs of investors, who shall seek further professional advice before making any investment decision. This document and the information may not be reproduced, distributed or published by any recipient for any purpose.

## Contact Details

### Commodity Team

Zaeem Haider Khan	Head of Commodities	Tel: (+92-21) 35301405	zaeem.haider@igi.com.pk
Shakeel Ahmad	Branch Manager – Faisalabad	Tel: (+92-41) 2540843-45	shakeel.ahmad1@igi.com.pk
Ehsan Ul Haq	Trader – Lahore	Tel: (+92-42) 3830559-68	ehsan.haq@igi.com.pk
Dil Muhammad	Trader – Lahore	Tel: (+92-41) 2540843-45	dil.muhammad@igi.com.pk
Inamullah Shakir	Trader – Islamabad	Tel: (+92-21) 32429613-14	inam.ullah@igi.com.pk
Sheikh Muhammad Imran	Trader – Karachi	Tel: (+92-21) 35301684	imran.ahmed@igi.com.pk
Asif Saleem	Branch Manager – Rahim Yar Khan	Tel: (+92-68) 5871652-6	asif.saleem@igi.com.pk
Mahtab Ali	Branch Manager – Multan	Tel: (+92-61) 4512003	mahtab.ali@igi.com.pk

### Research Team

Abdullah Farhan	Head of Research	Tel: (+92-21) 111-234-234 Ext: 912	abdullah.farhan@igi.com.pk
Sakina Makati	Research Analyst	Tel: (+92-21) 111-234-234 Ext: 810	sakina.makati@igi.com.pk
Laraib Nisar	Research Analyst	Tel: (+92-21) 111-234-234 Ext: 974	laraib.nisar@igi.com.pk
Sania Bajwa	Research Analyst	Tel: (+92-21) 111-234-234 Ext: 569	sania.bajwa@igi.com.pk
Sufyan Siddiqui	Database Officer	Tel: (+92-21) 111-234-234 Ext: 888	sufyan.siddiqui@igi.com.pk

### IGI Finex Securities Limited

Trading Rights Entitlement Certificate (TREC) Holder of Pakistan Stock Exchange Limited |

Corporate member of Pakistan Mercantile Exchange Limited

Website: [www.igisecurities.com.pk](http://www.igisecurities.com.pk)

#### Head Office

Suite No 701-713, 7th Floor, The Forum, G-20,  
Khayaban-e-Jami Block-09, Clifton, Karachi-75600

UAN: (+92-21) 111-444-001 | (+92-21) 111-234-234

Fax: (+92-21) 35309169, 35301780

#### Lahore Office

Shop # G-009, Ground Floor,  
Packages Mall

Tel: (+92-42) 38303560-69

Fax: (+92-42) 38303559

#### Islamabad Office

3<sup>rd</sup> Floor, Kamran Centre,  
Block- B, Jinnah Avenue, Blue Area

Tel: (+92-51) 2604861-2, 2604864,  
2273439

Fax: (+92-51) 2273861

#### Faisalabad Office

Office No. 2, 5 & 8, Ground Floor, The  
Regency International 949, The Mall  
Faisalabad

Tel: (+92-41) 2540843-45

#### Rahim Yar Khan Office

Plot # 12, Basement of Khalid Market,  
Model Town, Town Hall Road

Tel: (+92-68) 5871652-3

Fax: (+92-68) 5871651

#### Multan Office

Mezzanine Floor, Abdali Tower,  
Abdali Road

Tel: (92-61) 4512003, 4571183

IGI Finex Securities Limited

© Copyright 2024 IGI Finex Securities Limited